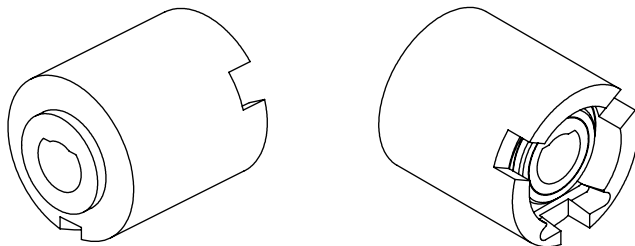
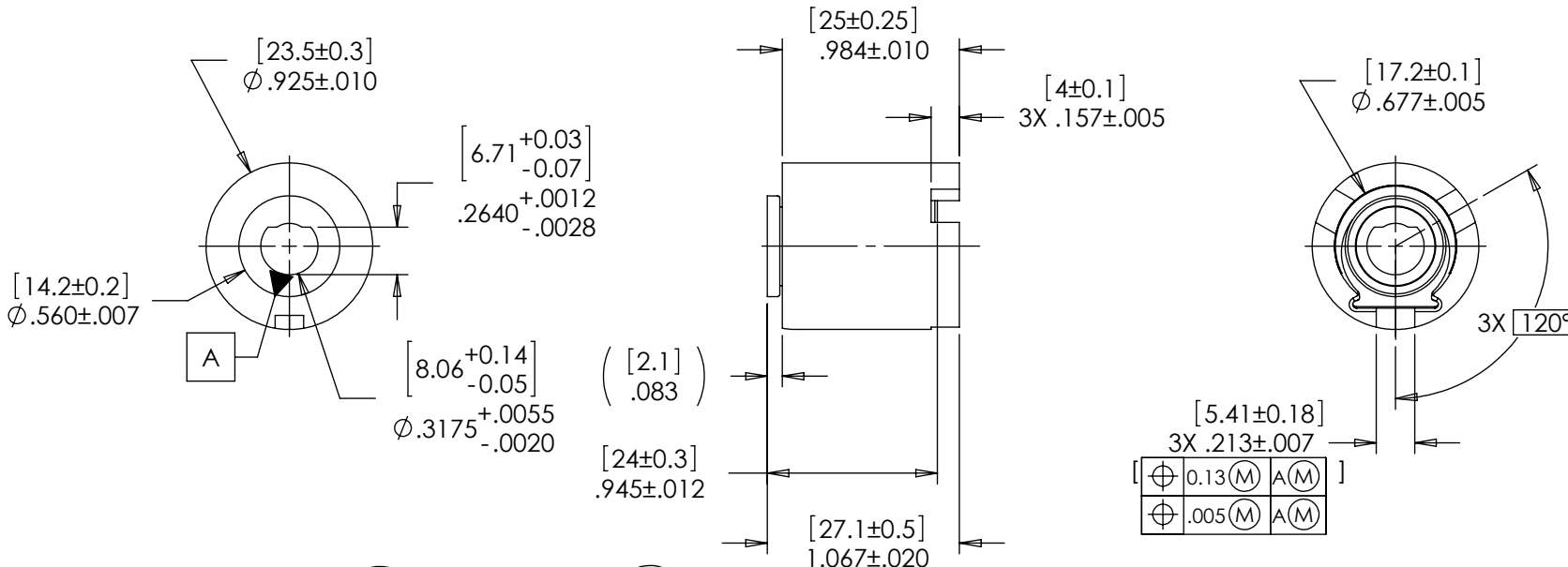


REELL SLIP CLUTCH HIGH TORQUE

DESCRIPTION:
SC-HT-Nm-BORE
SHOWN:
8mm BORE
"D" SHAFT
THREE DOG DRIVE HUB

CURRENT TORQUES AVAILABLE
SLIP TORQUE: [4.0 Nm] 35.4 Lb-in ±20%
SLIP TORQUE: [5.0 Nm] 44.3 Lb-in ±20%
SLIP TORQUE: [6.0 Nm] 53.1 Lb-in ±20%
SLIP TORQUE: [7.5 Nm] 66.4 Lb-in ±20%

REELL PART NO.
83227-006
83227-008
83227-010
83227-013



TDS Precision Products
 TDS Precision Products GmbH
 Industriestrasse 1a
 CH-8157 Dielsdorf
 T + 41 44 885 30 80
 info@tds-pp.com
 www.tds-pp.com

INTERPRET PRINT PER
ASME Y14.5M-1994
THIS PRINT IS THE
CONFIDENTIAL PROPERTY
OF REELL PRECISION MFG.
THIRD ANGLE PROJECTION

LEVEL	DESCRIPTION	DRAWN	DATE	APPROVED
DRAWN: HMA	DATE: 13APR11	PART NO: 83227-XXX		
CHECKED: RGW	DATE: 09MAY11	TITLE: SLIP DEVICE HIGH TORQUE		
APPROVED: RGW	DATE: 09MAY11	DESCRIPTION: SC-HT		
REVISED:	DIMS: [mm]IN	REV: A		
REELL PRECISION MANUFACTURING 1259 WILLOW LAKE BOULEVARD SAINT PAUL, MINNESOTA 55110-5103, USA		SCALE: 1:1	DO NOT SCALE DRAWING	SHEET 1 OF 1

SPECIFICATION SUBJECT TO CHANGE