

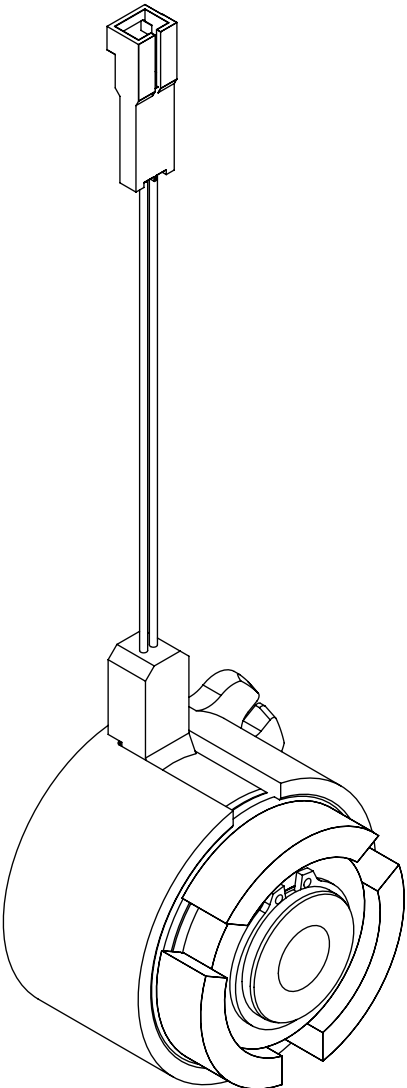
CURRENTLY AVAILABLE CATALOG OPTIONS	
CATALOG CODE	
EC75LL-CW-3/8-12	
EC75LL-CW-3/8-24	
EC75LL-CW-1/2-12	
EC75LL-CW-1/2-24	
EC75LL-CW-5/8-12	
EC75LL-CW-5/8-24	
EC75LL-CW-10mm-24	
EC75LL-CW-12mm-12	
EC75LL-CW-12mm-24	
EC75LL-CCW-3/8-12	
EC75LL-CCW-3/8-24	
EC75LL-CCW-1/2-12	
EC75LL-CCW-1/2-24	
EC75LL-CCW-5/8-12	
EC75LL-CCW-5/8-24	
EC75LL-CCW-10mm-24	
EC75LL-CCW-12mm-12	
EC75LL-CCW-12mm-24	
EC75LL-CW-15mm-12	
EC75LL-CW-15mm-24	
EC75LL-CCW-15mm-12	
EC75LL-CCW-15mm-24	

CATALOG CODE  
EC75-XX-XXX-XX

DIRECTION
CW CCW

SHAFT ID
3/8 (IN) 1/2 (IN) 5/8 (IN) 10mm 12mm 15mm

VOLTAGE
12 24



**TDS** Precision Products  
TDS Precision Products GmbH  
Industriestrasse 1a  
CH-8157 Dielsdorf  
T + 41 44 885 30 80  
info@tds-pp.com  
www.tds-pp.com

INTERPRET PRINT PER  
ASME Y14.5M-1994  
THIS PRINT IS THE  
CONFIDENTIAL PROPERTY  
OF REELL PRECISION MFG.  
THIRD ANGLE PROJECTION

LEVEL	DESCRIPTION		DRAWN	DATE	APPROVED
DRAWN:	DDF	DATE:	05-14-02	TITLE:  <b>SALES DRAWING</b>	
CHECKED:	RGW	DATE:	05-14-02		
APPROVED:	RGW	DATE:	05-14-02		
REVISED:	06-08-20	DIMS:	[IN]mm		
 REELL PRECISION MANUFACTURING 1259 WILLOW LAKE BOULEVARD SAINT PAUL, MINNESOTA 55110-5103, USA			DESCRIPTION:		REV:
			EC75LL		G
SCALE: 1:1		DO NOT SCALE DRAWING		SHEET 1 OF 2	

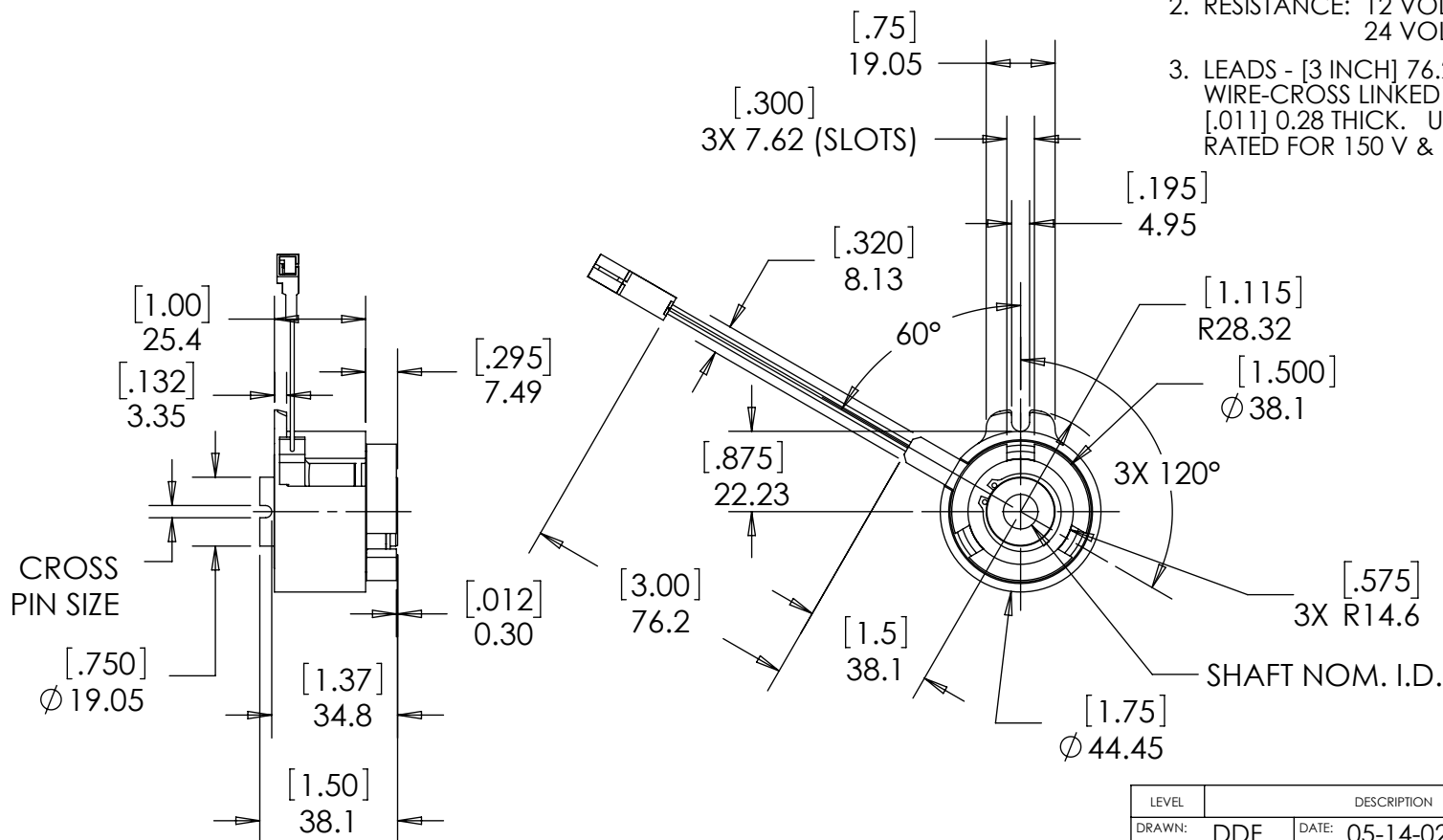
SPECIFICATIONS SUBJECT TO CHANGE

# REELL RADIAL ELECTRIC CLUTCH

SHAFT NOM. I.D.	CROSS PIN SIZE	ONE MILLION CYCLE TORQUE RATING: [75 Lb-in] 8.5 Nm TOTAL LOAD.
3/8	1/8	3/8 IN BORE SHOWN
1/2	1/8	
5/8	1/8	
10mm	3	
12mm	3	
15mm	3	

## NOTES:

- CONNECTOR PINS ARE [.025 x .025] 0.64 x 0.64 SQUARE. THE FOLLOWING MATING CONNECTORS CAN BE USED.  
TERMINAL: POLARIZED LATCHING CONNECTOR, INSULATION DISPLACEMENT CONTACTS  
AMP NO. 5-103956-1  
ALTERNATE TERMINAL:  
MOLEX NO. 14-60-0022  
A LEAD SET WITH MATING CONNECTOR AND [15 INCH] 380mm LEADS IS AVAILABLE. REELL CATALOG CODE LS-01-380.
- RESISTANCE: 12 VOLTS 25 OHMS AT [68°F] 20°C.  
24 VOLTS 100 OHMS AT [68°F] 20°C.
- LEADS - [3 INCH] 76.2mm NO. 24 AWG STRANDED WIRE-CROSS LINKED POLYETHYLENE INSULATION [.011] 0.28 THICK. UL 3265 & CSA AWM APPROVED. RATED FOR 150 V & 125°C.



ALL DIMENSIONS REFERENCE  
SEE CAD MODEL FOR UNSPECIFIED FEATURES.

SPECIFICATIONS SUBJECT TO CHANGE

**TDS** Precision Products  
TDS Precision Products GmbH  
Industriestrasse 1a  
CH-8157 Dielsdorf  
T + 41 44 885 30 80  
info@tds-pp.com  
www.tds-pp.com

LEVEL	DESCRIPTION	DRAWN	DATE	APPROVED
DRAWN:	DDF	DATE:	05-14-02	
CHECKED:	RGW	DATE:	05-14-02	
APPROVED:	RGW	DATE:	05-14-02	
REVISED:	06-08-20	DIMS:	[IN]mm	
TITLE: SALES DRAWING				
DESCRIPTION: EC75LL				REV: G
SCALE: 1:2		DO NOT SCALE DRAWING		SHEET 2 OF 2

INTERPRET PRINT PER  
ASME Y14.5M-1994  
THIS PRINT IS THE  
CONFIDENTIAL PROPERTY  
OF REELL PRECISION MFG.  
THIRD ANGLE PROJECTION



REELL PRECISION MANUFACTURING  
1259 WILLOW LAKE BOULEVARD  
SAINT PAUL, MINNESOTA 55110-5103, USA