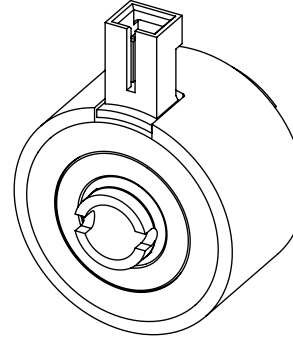
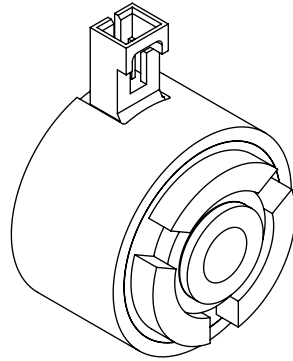


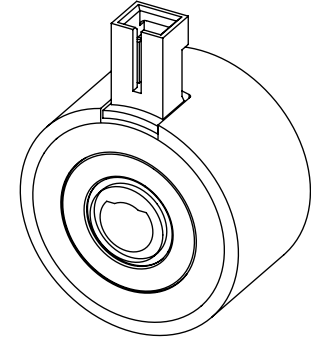
CURRENTLY AVAILABLE
CATALOG OPTIONS

CATALOG CODE

EC30XP-CW-8mm-24
EC30XP-CCW-8mm-24
EC30XP-CW-8mm-12
EC30XP-CCW-8mm-12
EC30XP-CW-6mm-24
EC30XP-CCW-6mm-24
EC30XP-CW-1/4-24
EC30XP-CCW-1/4-24
EC30XP-CW-6mm-12
EC30XP-CCW-6mm-12
EC30XP-CW-1/4-12
EC30XP-CCW-1/4-12
ED30XP-CW-8mm-24
ED30XP-CCW-8mm-24
ED30XP-CW-8mm-12
ED30XP-CCW-8mm-12
ED30XP-CW-6mm-24
ED30XP-CCW-6mm-24
ED30XP-CW-1/4-24
ED30XP-CCW-1/4-24
ED30XP-CW-6mm-12
ED30XP-CCW-6mm-12
ED30XP-CW-1/4-12
ED30XP-CCW-1/4-12



CROSS PIN DESIGN



D-SHAFT DESIGN

CATALOG CODE
EX30XP-XX-XXX-XX

SHAFT INTERFACE
C - CROSS PIN
D - D-SHAFT

DIRECTION
CW
CCW

SHAFT ID
6mm
1/4 (IN)
8mm

VOLTAGE
12
24


TDS Precision Products
TDS Precision Products GmbH
Industriestrasse 1a
CH-8157 Dielsdorf
T + 41 44 885 30 80
info@tds-pp.com
www.tds-pp.com

INTERPRET PRINT PER
ASME Y14.5M-1994
THIS PRINT IS THE
CONFIDENTIAL PROPERTY
OF REELL PRECISION MFG.

THIRD ANGLE PROJECTION



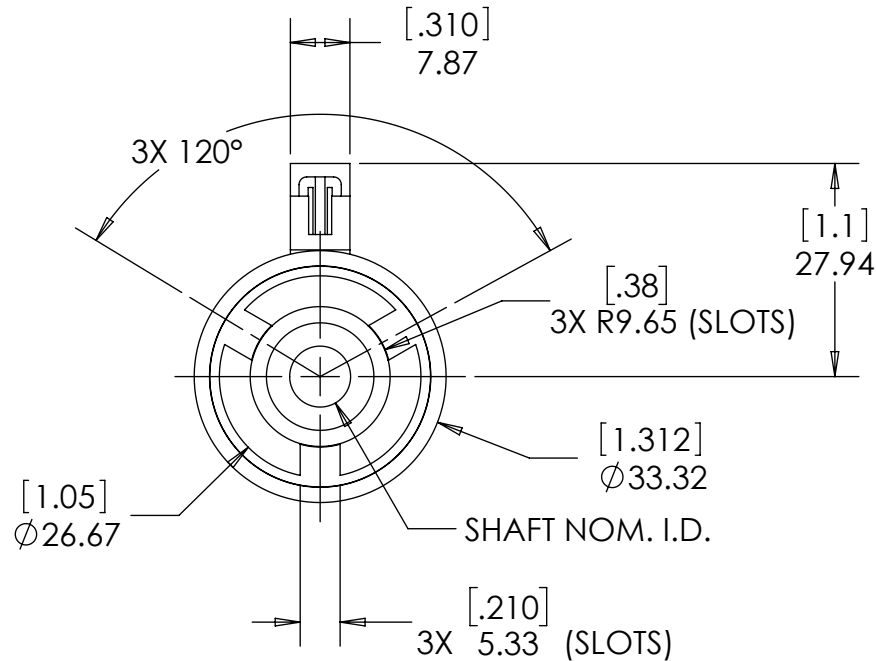
REELL PRECISION MANUFACTURING
1259 WILLOW LAKE BOULEVARD
SAINT PAUL, MINNESOTA 55110-5103, USA

LEVEL	DESCRIPTION		DRAWN	DATE	APPROVED
DRAWN:	DDF	DATE: 02-16-86			
CHECKED:	DDF	DATE: 07-24-86			
APPROVED:	GDL	DATE: 07-24-86			
REVISED:	06-11-20	DIMS: [IN]mm	TITLE:		
			SALES DRAWING		
			DESCRIPTION:		REV:
			EX30XP		J
REELL PRECISION MANUFACTURING 1259 WILLOW LAKE BOULEVARD SAINT PAUL, MINNESOTA 55110-5103, USA			SCALE: 1:1	DO NOT SCALE DRAWING	SHEET 1 OF 3

SPECIFICATIONS SUBJECT TO CHANGE

REELL RADIAL ELECTRIC CLUTCH		
SHAFT NOM. I.D.	CROSS PIN SIZE	ONE MILLION CYCLE TORQUE RATING: [30 Lb-in] 3.45 Nm TOTAL LOAD.
6mm	2.5 mm	CROSS PIN SHAFT 8mm BORE SHOWN
1/4 IN	3/32 IN	
8mm	2.5 mm	

1. CONNECTOR PINS ARE [.025 x .025] 0.64 x 0.64 SQUARE. THE FOLLOWING MATING CONNECTORS CAN BE USED.
TERMINAL: POLARIZED LATCHING CONNECTOR,
INSULATION DISPLACEMENT CONTACTS
AMP NO. 5-103956-1
ALTERNATE TERMINAL:
MOLEX NO. 14-60-0022
A LEAD SET WITH MATING CONNECTOR AND
[15 INCH] 380mm LEADS IS AVAILABLE. REELL CATALOG
CODE LS-01-380.
2. RESISTANCE: 12 VOLTS 44 OHMS AT [68°F] 20°C.
24 VOLTS 175 OHMS AT [68°F] 20°C.




SPECIFICATIONS SUBJECT TO CHANGE



TDS Precision Products

TDS Precision Products GmbH
Industriestrasse 1a
CH-8157 Dielsdorf

T + 41 44 885 30 80
info@tds-pp.com
www.tds-pp.com

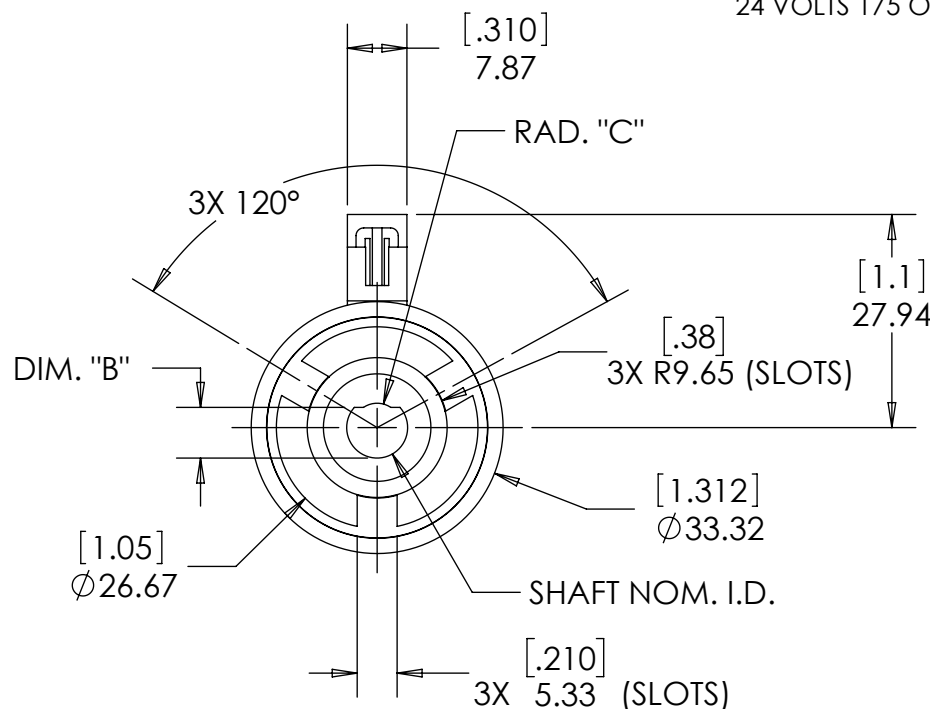
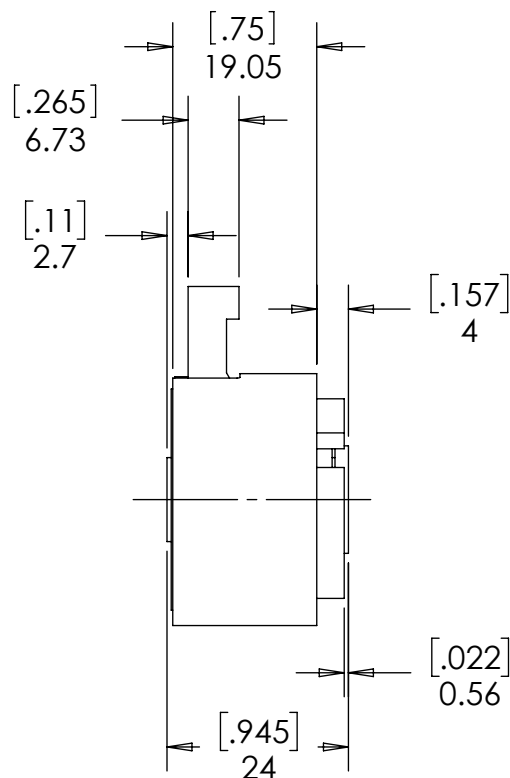
LEVEL	DESCRIPTION		DRAWN	DATE	APPROVED
DRAWN: DDF	DATE: 02-16-86	<div>TITLE:</div> <div>SALES DRAWING</div>			
CHECKED: DDF	DATE: 07-24-86				
APPROVED: GDL	DATE: 07-24-86				
REVISED: 06-11-20	DIMS: [IN]mm	<div>TITLE:</div> <div>SALES DRAWING</div>			
		<div>DESCRIPTION:</div> <div>EX30XP</div> <div>REV: J</div>			
REELL PRECISION MANUFACTURING 1259 WILLOW LAKE BOULEVARD SAINT PAUL, MINNESOTA 55110-5103, USA		<div>SCALE: 1:1</div> <div>DO NOT SCALE DRAWING</div> <div>SHEET 2 OF 3</div>			

REELL RADIAL ELECTRIC CLUTCH

SHAFT NOM. I.D.	DIM. "B"	RAD. "C"	ONE MILLION CYCLE TORQUE RATING: [30 Lb-in] 3.45 Nm TOTAL LOAD. D-SHAFT 8mm BORE SHOWN
6mm	5.01 mm	2.51 mm	
1/4 IN	.2115 IN	.099 IN	
8mm	6.64 mm	3.2 mm	

NOTES:

- CONNECTOR PINS ARE [.025 x .025] 0.64 x 0.64 SQUARE. THE FOLLOWING MATING CONNECTORS CAN BE USED.
TERMINAL: POLARIZED LATCHING CONNECTOR, INSULATION DISPLACEMENT CONTACTS
AMP NO. 5-103956-1
ALTERNATE TERMINAL:
MOLEX NO. 14-60-0022
A LEAD SET WITH MATING CONNECTOR AND [15 INCH] 380mm LEADS IS AVAILABLE. REELL CATALOG CODE LS-01-380.
- RESISTANCE: 12 VOLTS 44 OHMS AT [68°F] 20°C.
24 VOLTS 175 OHMS AT [68°F] 20°C.



ALL DIMENSIONS REFERENCE
SEE CAD MODEL FOR UNSPECIFIED FEATURES.

SPECIFICATIONS SUBJECT TO CHANGE

TDS Precision Products
TDS Precision Products GmbH
Industriestrasse 1a
CH-8157 Dielsdorf
T + 41 44 885 30 80
info@tds-pp.com
www.tds-pp.com

LEVEL	DESCRIPTION		DRAWN	DATE	APPROVED
DRAWN:	DDF	DATE:	02-16-86	TITLE: SALES DRAWING	
CHECKED:	DDF	DATE:	07-24-86		
APPROVED:	GDL	DATE:	07-24-86		
REVISED:	06-11-20	DIMS:	[IN]mm		
REELL REELL PRECISION MANUFACTURING 1259 WILLOW LAKE BOULEVARD SAINT PAUL, MINNESOTA 55110-5103, USA			DESCRIPTION:		REV:
			EX30XP		J
			SCALE: 1:1	DO NOT SCALE DRAWING	SHEET 3 OF 3

INTERPRET PRINT PER
ASME Y14.5M-1994
THIS PRINT IS THE
CONFIDENTIAL PROPERTY
OF REELL PRECISION MFG.

THIRD ANGLE PROJECTION

