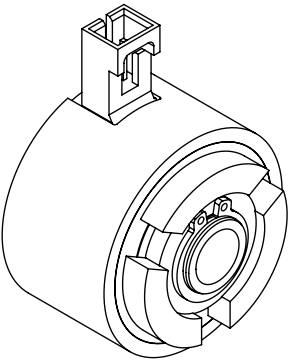


CURRENTLY AVAILABLE CATALOG OPTIONS
CATALOG CODE
EC30LL-CW-8mm-24
EC30LL-CCW-8mm-24
EC30LL-CW-8mm-12
EC30LL-CCW-8mm-12
EC30LL-CW-6mm-24
EC30LL-CCW-6mm-24
EC30LL-CW-1/4-24
EC30LL-CCW-1/4-24
EC30LL-CW-1/4-12
EC30LL-CCW-1/4-12



CATALOG CODE EC30LL-XX-XXX-XX

DIRECTION
CW CCW

SHAFT ID
6mm 1/4 (IN) 8mm

VOLTAGE
12 24

TDS Precision Products
TDS Precision Products GmbH
Industriestrasse 1a
CH-8157 Dielsdorf
T + 41 44 885 30 80
info@tds-pp.com
www.tds-pp.com

INTERPRET PRINT PER
ASME Y14.5M-1994
THIS PRINT IS THE
CONFIDENTIAL PROPERTY
OF REELL PRECISION MFG.
THIRD ANGLE PROJECTION

LEVEL	DESCRIPTION	DRAWN	DATE	APPROVED
DRAWN: LIM	DATE: 02-05-01	<div>SALES DRAWING</div> <div>DESCRIPTION: EC30LL</div> <div>REV: F</div>		
CHECKED: RGW	DATE: 03-30-01			
APPROVED: RGW	DATE: 03-30-01			
REVISED: 06-08-20	DIMS: [IN]mm			
<div>REELL</div> <div>REELL PRECISION MANUFACTURING 1259 WILLOW LAKE BOULEVARD SAINT PAUL, MINNESOTA 55110-5103, USA</div>		SCALE: 1:1	DO NOT SCALE DRAWING	SHEET 1 OF 2

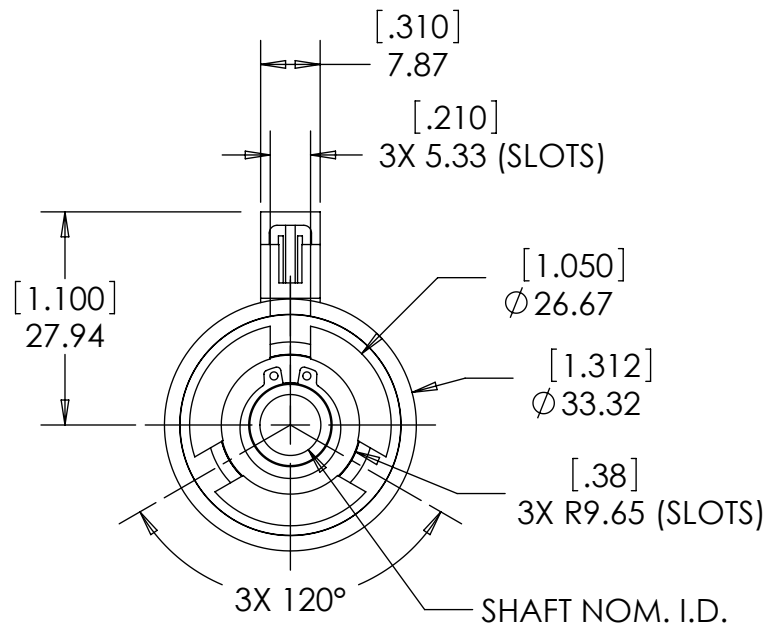
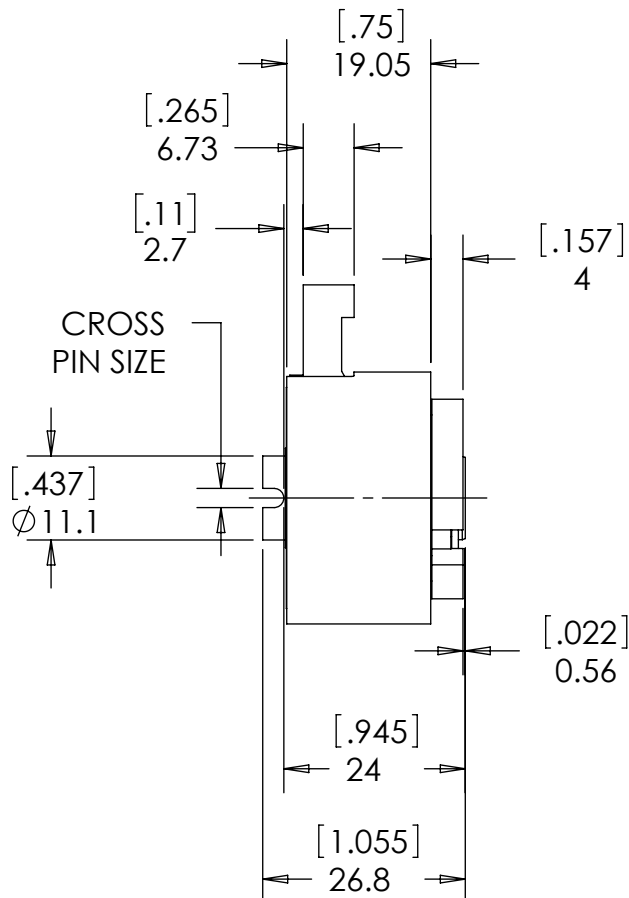
SPECIFICATIONS SUBJECT TO CHANGE

REELL RADIAL ELECTRIC CLUTCH

SHAFT NOM. I.D.	CROSS PIN SIZE	ONE MILLION CYCLE TORQUE RATING: [30lb-in] 3.45 Nm TOTAL LOAD. 8mm BORE SHOWN
6mm	2.5 mm	
1/4 IN	3/32 IN	
8mm	2.5 mm	

NOTES:


- CONNECTOR PINS ARE [.025 x .025] 0.64 x 0.64 SQUARE. THE FOLLOWING MATING CONNECTORS CAN BE USED.
 TERMINAL: POLARIZED LATCHING CONNECTOR, INSULATION DISPLACEMENT CONTACTS
 AMP NO. 5-103956-1
 ALTERNATE TERMINAL:
 MOLEX NO. 14-60-0022
 A LEAD SET WITH MATING CONNECTOR AND [15 INCH] 380mm LEADS IS AVAILABLE. REELL CATALOG CODE LS-01-380.
- RESISTANCE: 12 VOLTS 44 OHMS AT [68°F] 20°C.
 24 VOLTS 175 OHMS AT [68°F] 20°C.



ALL DIMENSIONS REFERENCE
SEE CAD MODEL FOR UNSPECIFIED FEATURES.

SPECIFICATIONS SUBJECT TO CHANGE

TDS Precision Products
 TDS Precision Products GmbH
 Industriestrasse 1a
 CH-8157 Dielsdorf
 T + 41 44 885 30 80
 info@tds-pp.com
 www.tds-pp.com

LEVEL		DESCRIPTION		DRAWN	DATE	APPROVED
DRAWN:	LIM	DATE:	02-05-01	TITLE: <div>SALES DRAWING</div>		
CHECKED:	RGW	DATE:	03-30-01			
APPROVED:	RGW	DATE:	03-30-01			
REVISED:	06-08-20	DIMS:	[IN]mm			
<div></div>				DESCRIPTION: EC30LL		REV: F
REELL PRECISION MANUFACTURING 1259 WILLOW LAKE BOULEVARD SAINT PAUL, MINNESOTA 55110-5103, USA						
		SCALE: 1:1		DO NOT SCALE DRAWING		SHEET 2 OF 2