

CURRENTLY AVAILABLE CATALOG OPTIONS
CATALOG CODE
EC25LL-CW-1/4-12
EC25LL-CW-1/4-24
EC25LL-CW-6mm-12
EC25LL-CW-6mm-24
EC25LL-CCW-1/4-12
EC25LL-CCW-1/4-24
EC25LL-CCW-6mm-12
EC25LL-CCW-6mm-24
EC25LL-CW-1/4-12-LS
EC25LL-CW-1/4-24-LS
EC25LL-CCW-1/4-12-LS
EC25LL-CCW-1/4-24-LS

CATALOG CODE
EC25LL-XX-XXX-XX-X

DIRECTION
CW CCW

SHAFT ID
6mm 1/4 (IN)


VOLTAGE
12 24

OTHER OPTIONS
(Blank) - MOLDED COIL CONNECTOR AND POWDERED METAL SHAFT LS - FLYING LEADS AND STEEL SHAFT


TDS Precision Products
TDS Precision Products GmbH
Industriestrasse 1a
CH-8157 Dielsdorf
T + 41 44 885 30 80
info@tds-pp.com
www.tds-pp.com

INTERPRET PRINT PER
ASME Y14.5M-1994
THIS PRINT IS THE
CONFIDENTIAL PROPERTY
OF REELL PRECISION MFG.

THIRD ANGLE PROJECTION


LEVEL		DESCRIPTION		DRAWN	DATE	APPROVED
DRAWN: DDF		DATE: 7-14-00		<div>SALES DRAWING</div>		
CHECKED: RGW		DATE: 7-14-00				
APPROVED: RGW		DATE: 7-14-00				
REVISED: 6-4-20		DIMS: [IN]mm				
<div></div>				TITLE:		
<div>REELL PRECISION MANUFACTURING 1259 WILLOW LAKE BOULEVARD SAINT PAUL, MINNESOTA 55110-5103, USA</div>				DESCRIPTION:		REV:
				EC25LL		F
				SCALE: 1:1	DO NOT SCALE DRAWING	SHEET 1 OF 3

SPECIFICATIONS SUBJECT TO CHANGE

REELL RADIAL ELECTRIC CLUTCH

SHAFT NOM. I.D.	CROSS PIN SIZE	ONE MILLION CYCLE TORQUE RATING: [25 Lb-in] 2.8 Nm TOTAL LOAD.
6mm	2.5mm	6mm BORE MOLDED COIL CONNECTOR SHOWN
1/4 IN	3/32 IN	

NOTES:

- CONNECTOR PINS ARE [.025 x .025] 0.64 x 0.64 SQUARE. THE FOLLOWING MATING CONNECTORS CAN BE USED.
TERMINAL: POLARIZED LATCHING CONNECTOR, INSULATION DISPLACEMENT CONTACTS
AMP NO. 5-103956-1
ALTERNATE TERMINAL:
MOLEX NO. 14-60-0022
A LEAD SET WITH MATING CONNECTOR AND [15 INCH] 380mm LEADS IS AVAILABLE. REELL CATALOG CODE LS-01-380.
- RESISTANCE: 12 VOLTS 60 OHMS AT [68°F] 20°C.
24 VOLTS 227 OHMS AT [68°F] 20°C.

D

C

B

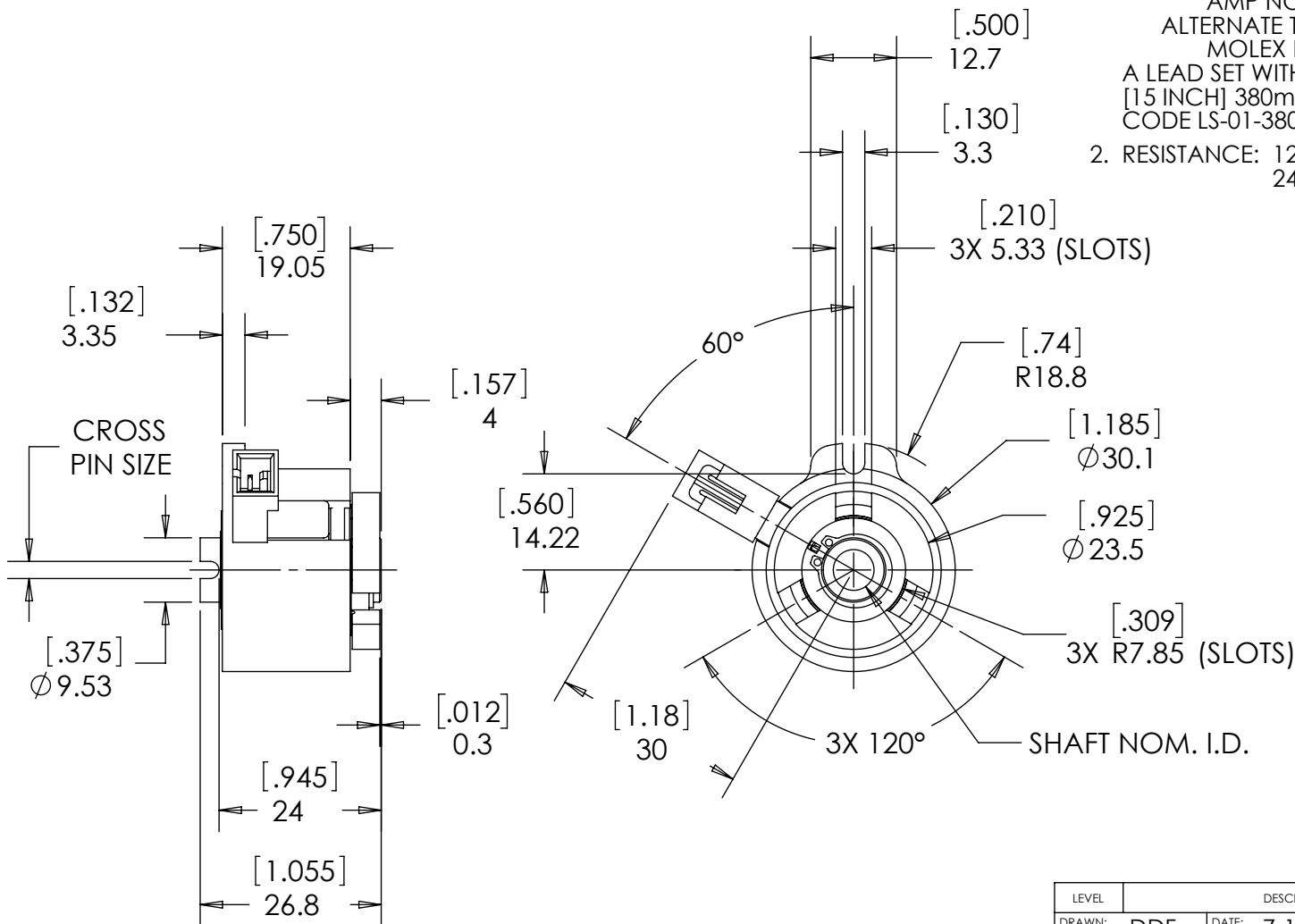
A

D

C

B

A



ALL DIMENSIONS REFERENCE
SEE CAD MODEL FOR UNSPECIFIED FEATURES.

SPECIFICATIONS SUBJECT TO CHANGE



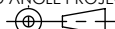
TDS Precision Products GmbH
Industriestrasse 1a
CH-8157 Dielsdorf

T + 41 44 885 30 80
info@tds-pp.com
www.tds-pp.com

LEVEL	DESCRIPTION	DRAWN	DATE	APPROVED
DRAWN: DDF	DATE: 7-14-00			
CHECKED: RGW	DATE: 7-14-00			
APPROVED: RGW	DATE: 7-14-00			
REVISED: 6-4-20	DIMS: [IN]mm			
TITLE: SALES DRAWING				
DESCRIPTION: EC25LL				REV: F
SCALE: 1:1		DO NOT SCALE DRAWING		SHEET 2 OF 3

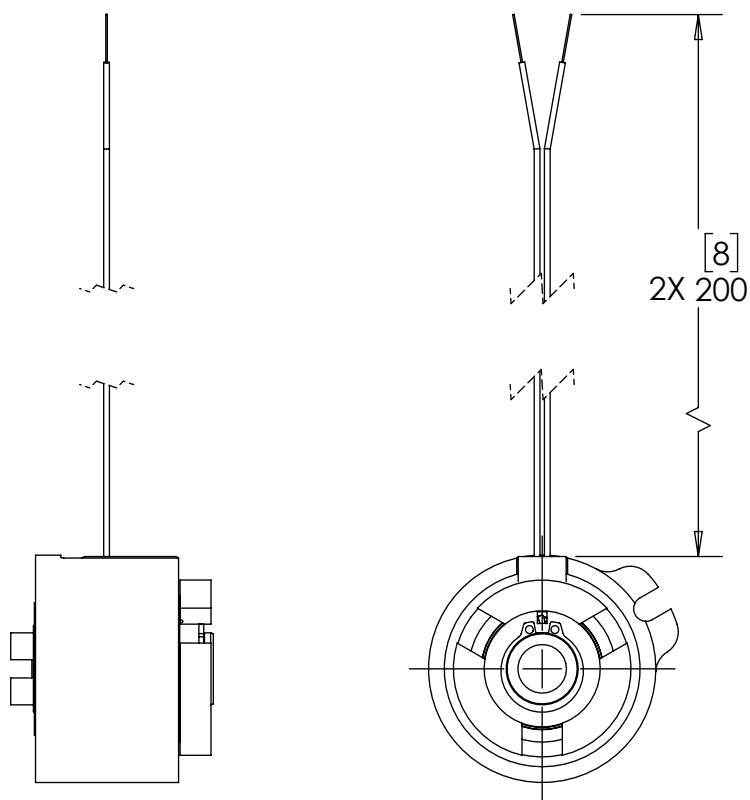
INTERPRET PRINT PER
ASME Y14.5M-1994
THIS PRINT IS THE
CONFIDENTIAL PROPERTY
OF REELL PRECISION MFG.

THIRD ANGLE PROJECTION



REELL PRECISION MANUFACTURING
1259 WILLOW LAKE BOULEVARD
SAINT PAUL, MINNESOTA 55110-5103, USA

FLYING LEAD AND STEEL SHAFT OPTION:



NOTES:

1. LEADS - [8 INCH] 200mm NO. 24 AWG STRANDED WIRE-CROSS LINKED POLYETHYLENE INSULATION [.011] 0.28 THICK. UL 3265 & CSA AWM APPROVED. RATED FOR 150 V & 125°C.

ALL DIMENSIONS REFERENCE
SEE CAD MODEL FOR UNSPECIFIED FEATURES.

SPECIFICATIONS SUBJECT TO CHANGE

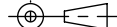


TDS Precision Products GmbH
Industriestrasse 1a
CH-8157 Dielsdorf

T + 41 44 885 30 80
info@tds-pp.com
www.tds-pp.com

INTERPRET PRINT PER
ASME Y14.5M-1994
THIS PRINT IS THE
CONFIDENTIAL PROPERTY
OF REELL PRECISION MFG.

THIRD ANGLE PROJECTION



LEVEL	DESCRIPTION		DRAWN	DATE	APPROVED
DRAWN:	DDF	DATE:	7-14-00	<div>TITLE:</div> <div>SALES DRAWING</div> <div>DESCRIPTION: EC25LL</div> <div>REV: F</div>	
CHECKED:	RGW	DATE:	7-14-00		
APPROVED:	RGW	DATE:	7-14-00		
REVISED:	6-4-20	DIMS:	[IN]mm		
<div>REELL</div> <div>REELL PRECISION MANUFACTURING</div> <div>1259 WILLOW LAKE BOULEVARD</div> <div>SAINT PAUL, MINNESOTA 55110-5103, USA</div>			SCALE: 1:1	DO NOT SCALE DRAWING	SHEET 3 OF 3