

CURRENTLY AVAILABLE
CATALOG OPTIONS

CATALOG CODE

EC15-CW-6mm-24

EC15-CCW-6mm-24

EC15-CW-1/4-24

EC15-CCW-1/4-24

EC15-CW-6mm-12

EC15-CCW-6mm-12

EC15-CW-1/4-12

EC15-CCW-1/4-12

EC15-CW-6mm-24-L

EC15-CCW-6mm-24-L

EC15-CW-1/4-24-L

EC15-CCW-1/4-24-L

EC15-CW-6mm-12-L

EC15-CCW-6mm-12-L

EC15-CW-1/4-12-L

EC15-CCW-1/4-12-L

CATALOG CODE
EC15-XX-XXX-XX-X

DIRECTION

CW
CCW

SHAFT ID

6mm
1/4 (IN)

VOLTAGE

12
24

OTHER OPTIONS

(Blank) - MOLDED COIL CONNECTOR
L - FLYING LEADS

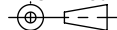


TDS Precision Products GmbH
Industriestrasse 1a
CH-8157 Dielsdorf


T + 41 44 885 30 80
info@tds-pp.com
www.tds-pp.com

INTERPRET PRINT PER
ASME Y14.5M-1994
THIS PRINT IS THE
CONFIDENTIAL PROPERTY
OF REELL PRECISION MFG.

THIRD ANGLE PROJECTION



REELL PRECISION MANUFACTURING
1259 WILLOW LAKE BOULEVARD
SAINT PAUL, MINNESOTA 55110-5103, USA

LEVEL		DESCRIPTION		DRAWN	DATE	APPROVED
DRAWN:	DMT	DATE:	11-10-86	TITLE: SALES DRAWING		
CHECKED:	HMA	DATE:	09-10-87			
APPROVED:	GDL	DATE:	09-11-87			
REVISED:	06-03-20	DIMS:	[IN]mm			
				DESCRIPTION:		REV:
				EC15		R
REELL PRECISION MANUFACTURING 1259 WILLOW LAKE BOULEVARD SAINT PAUL, MINNESOTA 55110-5103, USA				SCALE: 1:1	DO NOT SCALE DRAWING	SHEET 1 OF 3


SPECIFICATIONS SUBJECT TO CHANGE

REELL RADIAL ELECTRIC CLUTCH		
SHAFT NOM. I.D.	CROSS PIN SIZE	ONE MILLION CYCLE TORQUE RATING: [15 lb-in] 1.7 Nm TOTAL LOAD.
6mm	2.5mm	6mm BORE MOLDED COIL CONNECTOR SHOWN
1/4 IN	3/32 IN	

1. CONNECTOR PINS ARE [.025 x .025] 0.64 x 0.64 SQUARE. THE FOLLOWING MATING CONNECTORS CAN BE USED.
TERMINAL: POLARIZED LATCHING CONNECTOR,
INSULATION DISPLACEMENT CONTACTS
AMP NO. 5-103956-1
ALTERNATE TERMINAL:
MOLEX NO. 14-60-0022
A LEAD SET WITH MATING CONNECTOR AND
[15 INCH] 380mm LEADS IS AVAILABLE. REELL CATALOG
CODE LS-01-380.
2. RESISTANCE: 12 VOLTS 60 OHMS AT [68°F] 20°C.
24 VOLTS 227 OHMS AT [68°F] 20°C.



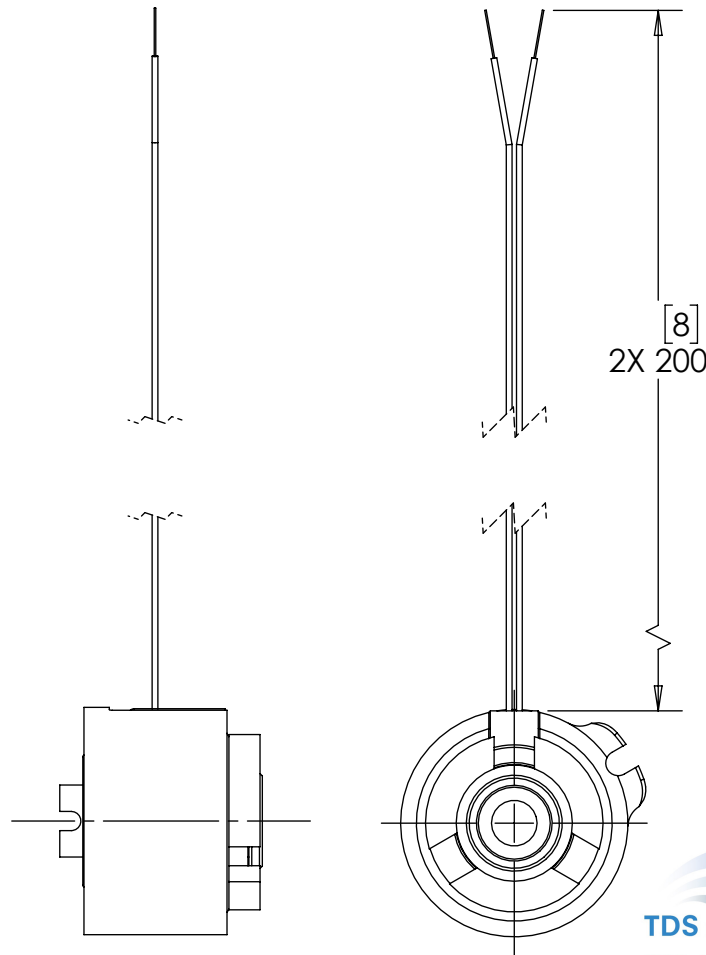
SPECIFICATIONS SUBJECT TO CHANGE

LEVEL	DESCRIPTION		DRAWN	DATE	APPROVED
DRAWN:	DMT	DATE: 11-10-86	<div>TITLE:</div> <div>SALES DRAWING</div> <div>DESCRIPTION: EC15</div> <div>REV: R</div>		
CHECKED:	HMA	DATE: 09-10-87			
APPROVED:	GDL	DATE: 09-11-87			
REVISED:	06-03-20	DIMS: [IN]mm			
			<div>SCALE: 1:1</div> <div>DO NOT SCALE DRAWING</div> <div>SHEET 2 OF 3</div>		
REELL PRECISION MANUFACTURING 1259 WILLOW LAKE BOULEVARD SAINT PAUL, MINNESOTA 55110-5103, USA					

NOTES:

1. LEADS - [8 INCH] 200mm NO. 24 AWG STRANDED WIRE-CROSS LINKED POLYETHYLENE INSULATION [.011] 0.28 THICK. UL 3265 & CSA AWM APPROVED. RATED FOR 150 V & 125°C.

FLYING LEAD OPTION:



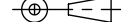
TDS Precision Products


TDS Precision Products GmbH
Industriestrasse 1a
CH-8157 Dielsdorf

T + 41 44 885 30 80
info@tds-pp.com
www.tds-pp.com

INTERPRET PRINT PER
ASME Y14.5M-1994
THIS PRINT IS THE
CONFIDENTIAL PROPERTY
OF REELL PRECISION MFG.

THIRD ANGLE PROJECTION



LEVEL		DESCRIPTION		DRAWN	DATE	APPROVED
DRAWN: DMT		DATE: 11-10-86		TITLE: SALES DRAWING		
CHECKED: HMA		DATE: 09-10-87				
APPROVED: GDL		DATE: 09-11-87				
REVISED: 06-03-20		DIMS: [IN]mm				
				DESCRIPTION:		
				EC15		
REELL PRECISION MANUFACTURING 1259 WILLOW LAKE BOULEVARD SAINT PAUL, MINNESOTA 55110-5103, USA				REV: R		
				SCALE: 1:1		DO NOT SCALE DRAWING
				SHEET 3 OF 3		

ALL DIMENSIONS REFERENCE
SEE CAD MODEL FOR UNSPECIFIED FEATURES.

SPECIFICATIONS SUBJECT TO CHANGE