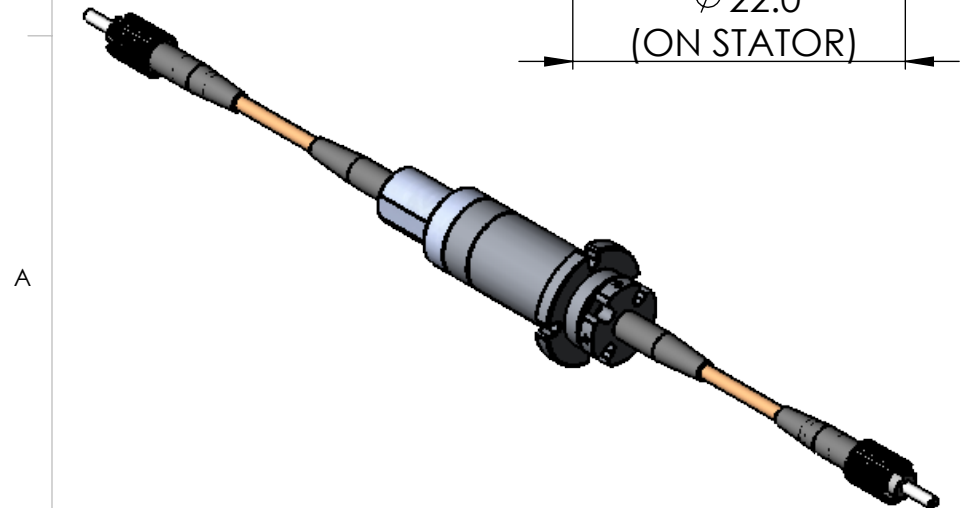


Note: More options available upon request.

STANDARD SPECIFICATIONS	
PARAMETERS	VALUES
Wavelength range	1310, 1550 nm, or both (850, 1310 nm, or both)
Insertion loss	<2 dB (typical: <1 dB)
Insertion loss ripple	<+/-0.5 dB
Return loss (SM)	>55 dB (MJPP: >60dB)
Maximum speed	10,000 rpm
Estimated life cycle	>500 million revolutions (1,000 rpm/365 days continuous)
Working temperature	-20 to 65 C
Storage temperature	-25 to 75 C
Package style	Pigtails on both ends
Housing material	Stainless steel
Fiber types	Single or multimode
Jacket types	900um, 2mm, 3 mm
Connector types	ST, FC, LC, SC (PC and APC)
Vibration	MIL-STD-167-1A
Mechanical shock	MIL-STD-810G
IP rating	IP 50



PROPRIETARY AND CONFIDENTIAL
 THE INFORMATION CONTAINED IN THIS DRAWING IS THE SOLE PROPERTY OF PRINCETEL, INC. ANY REPRODUCTION IN PART OR AS A WHOLE WITHOUT THE WRITTEN PERMISSION OF PRINCETEL, INC. IS PROHIBITED.

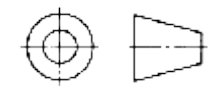
UNLESS OTHERWISE SPECIFIED:

DIMENSIONS ARE IN mm
 DO NOT SCALE DRAWING

TOLERANCES:
 ANGULAR: ± 1/2°
 ONE PLACE DECIMAL ± 0.100
 TWO PLACE DECIMAL ± 0.050
 THREE PLACE DECIMAL ± 0.025

MATERIAL:

DATE		NAME		PRINCETEL, INC.		
DRAWN	9/11/2015	L. X.				TITLE: MJP, FORJ
CHECKED	9/11/2015	R. Z.				
ENG APPR.						
MFG APPR.						
Q.A.						
COMMENTS: FIRST ANGLE PROJECTION				SIZE	DWG. NO.	REV
				B	1071-00-AD	2
				PART NO.	-	SHEET 1 OF 1



8 7 6 5 4 3 2 1

8 7 6 5 4 3 2 1

D

D

C

C

B

B

A

A