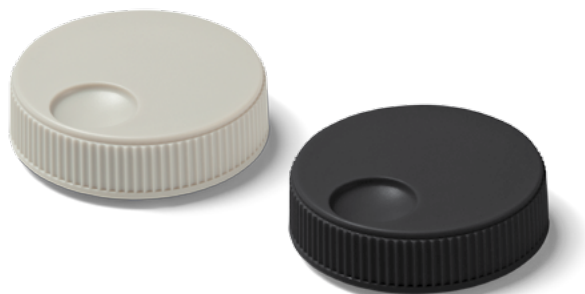


# Data Sheet for adjustment Knobs

## Adjustment knob

Series EKM



The knob in Ø33 mm is fixed with screws. The knob is suitable for Ø6 mm shafts and available in the colours grey and black. The recessed grip and the ribbed edge give the knob a secure haptic appearance.

- For Ø6 mm shafts
- In black or grey

### Data

|                                      |                     |
|--------------------------------------|---------------------|
| Ø knob                               | 33 mm               |
| For Ø shaft                          | Ø6 mm               |
| Material knob                        | ABS                 |
| Material hub                         | Brass               |
| Operating temperature range          | 0 °C up to +60 °C   |
| Storage temperature range            | -20 °C up to +80 °C |
| Colour knob                          | Grey or black       |
| Fastening parts included in delivery | 2 screws            |

### Order code

| Description                                 |     | Selection: <b>standard=black/bold</b> , possible <i>options=grey/italic</i> |                 |
|---|-----|---|-----------------|
| Series                                      | EKM |   |                 |
| Shaft diameter:<br>Ø 6 mm                   |     | 101   |                 |
| Knob colour:<br>Grey<br><i>Option black</i> |     |   | GRAU<br>SCHWARZ |

**For higher quantities or on-going demand, additional options are available as described below on request**

For example: Other shaft diameters or other colours



TDS Precision Products GmbH  
Industriestrasse 1a  
CH-8157 Dielsdorf

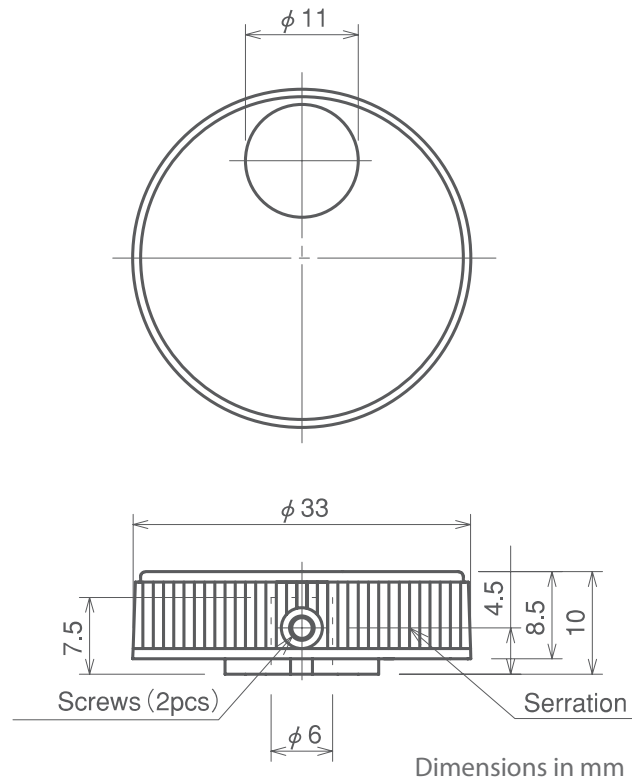
T + 41 44 885 30 80  
info@tds-pp.com  
www.tds-pp.com

# Data Sheet for adjustment Knobs

Adjustment knob

Series EKM

## Drawing



Accessories: M3X3 A fixed screw with the hexagon hole.