

Data Sheet for Precision adjustment Knobs

Precision adjustment Knob with Locking mechanism and Cardan coupling

Series SKK



The knob SKK with 50 dashes and revolution counter (20 rev.) in Ø22 mm housing has a locking mechanism and a cardan coupling.

- Knob with 50 dashes
- Revolution counter for 20 revolutions
- With locking mechanism and cardan coupling
- For 3..6.35 mm shaft

The SKK series allows a very precise manual handling with up to 20 revolutions (50 dashes per revolution). The lock prevents unintentional adjustments. The built-in cardan coupling prevents a possible stiffness of the knob, which can result with minimal misalignment.

Data adjustment knob

Number of full revolutions	20
Counter range of the adjustment knob	Scale with numbers (50 dashes) and revolution counter (20 revs)
Brake available	yes
For shaft diameter	3 mm / 3.175 mm / 4 mm / 6 mm / 6.35 mm
Housing diameter	22 mm
Housing depth	25 mm (with knob)
Knob diameter	Conical from 10 mm (front) to 12 mm (end)
Operating temperature range	-30 °C up to +60 °C
Storage temperature range	-30 °C up to +60 °C
Protection grade (IEC 60529)	IP40
Colour housing	Silver
Colour adjustment knob	Black with white scale
Material knob/housing	Plastic and metal
Mass	ca. 17 g
Mounting parts included in delivery	Mounting adaptor, nut, hexagon socket wrench

Order code

Description	Selection: standard=black/bold , possible <i>options=grey/italic</i>					
Series	SKK					
For shaft diameter:						
Ø 6,00		6 MM				
Ø 6,35		1/4"				
Option Ø 3		3 MM				
Option Ø 3,175		3,17 MM				
Option Ø 4		4 MM				



TDS Precision Products GmbH
Industriestrasse 1a
CH-8157 Dielsdorf

T + 41 44 885 30 80
info@tds-pp.com
www.tds-pp.com

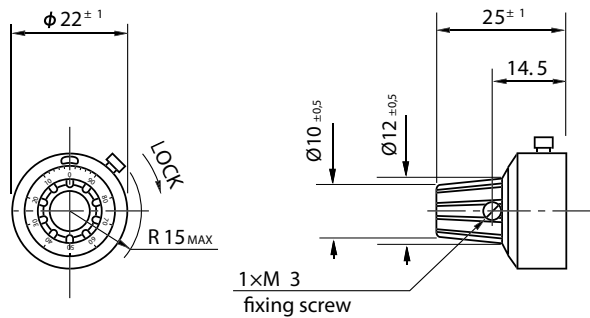
Date: 11/25/2021
Page: 1 of 2

Data Sheet for Precision adjustment Knobs

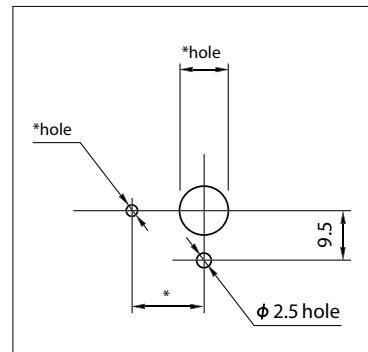
Precision adjustment Knob with Locking mechanism and Cardan coupling

Series SKK

Drawing

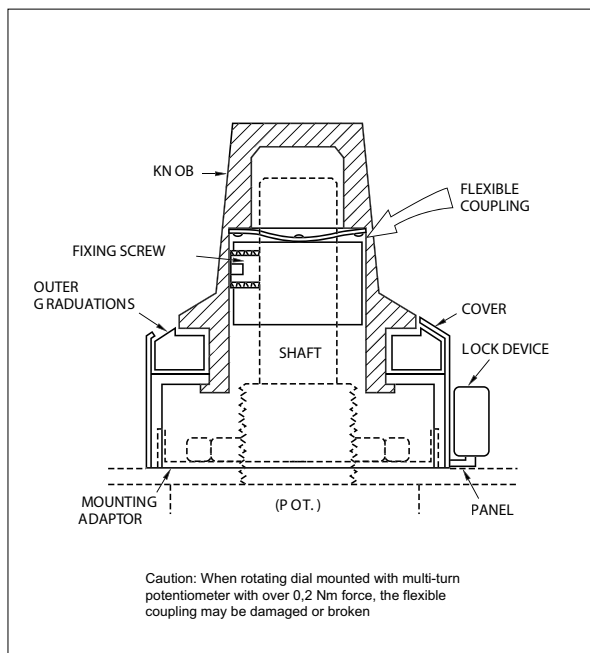


Panel Arrangements

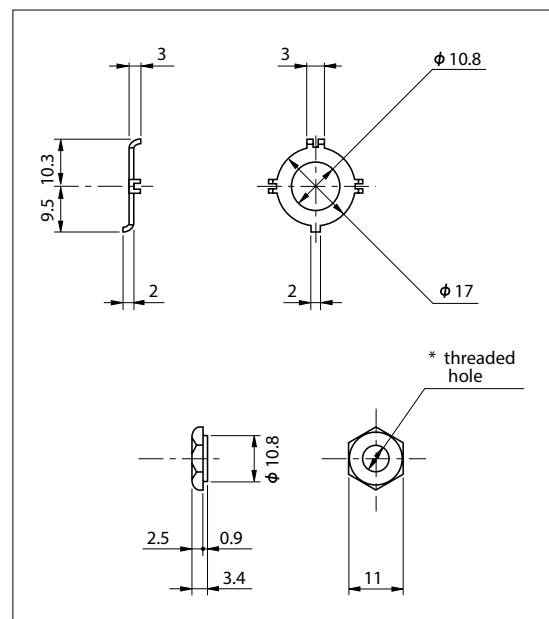


Note: The diameter of *hole is depending on the diameter of potentiometer to be mounted

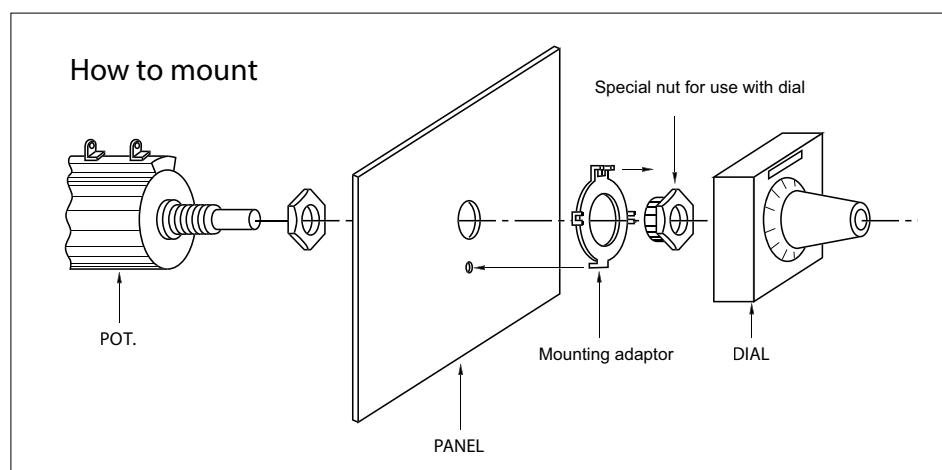
Flexible coupling



Mounting Adaptors



How to mount



Dimensions in mm