

# CATALOG CODE

## TI-160-X.XX-X-XX

TORQUE N-m
- 4.00
- 5.00
- 6.00

DIRECTION
F - ONE WAY FORWARD
R - ONE WAY REVERSE

FINS NO.
-01

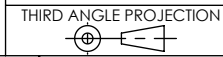
NOTES:

- APPLICATION CONDITIONS REFERENCE (USER MUST DETERMINE FITNESS FOR USE IN APPLICATION).  
ENVIRONMENT CONDITIONS: -20° TO +80°C UP TO 10% OF LIFE CYCLES AT HOT AND COLD CONDITIONS.
- LIFE: 25,000 CYCLES.  
ONE CYCLE = 120° OPEN/120° CLOSED.  
FIVE(5) CYCLES PER MINUTE MAX.
- MATERIAL:  
BRACKET AND SHAFT END ARE ENGINEERED PLASTIC  
SHAFT, TORQUE ELEMENT, AND ONE WAY BEARING ARE HARDENED STEEL
- STATIC TORQUE IS NORMALLY WITHIN 10% OF DYNAMIC TORQUE.
- TAB MAY BE MISALIGNED DUE TO SHIPPING. MISALIGNMENT IS EASILY FIXED BY ROTATING BRACKET IN THE TORQUE FREE DIRECTION.



TDS Precision Products GmbH  
Industriestrasse 1a  
CH-8157 Dielsdorf  
T + 41 44 885 30 80  
info@tds-pp.com  
www.tds-pp.com

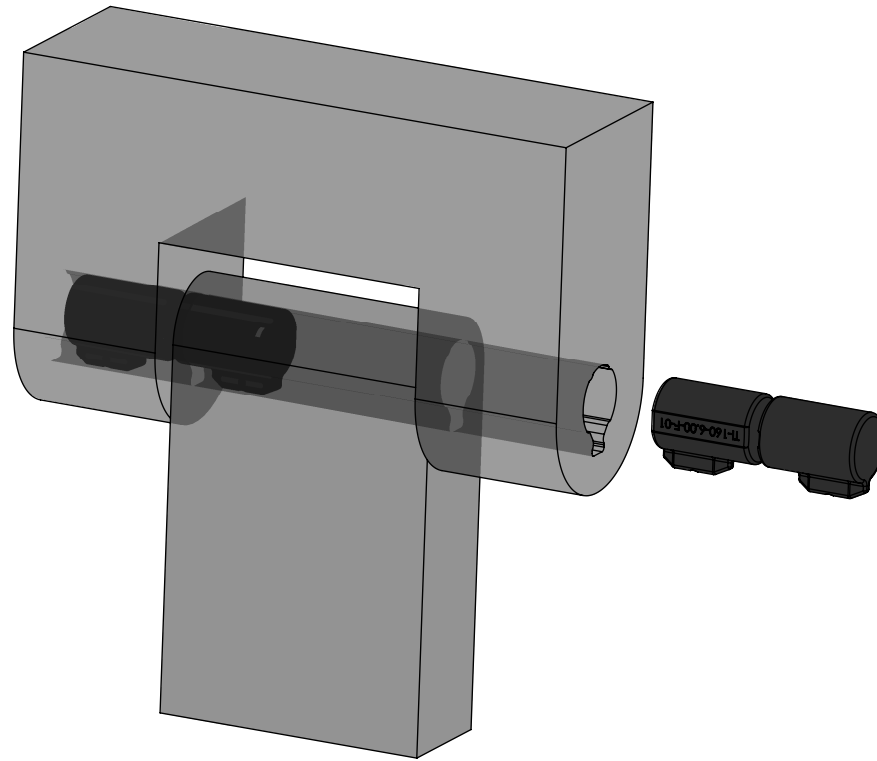
INTERPRET PRINT PER ASME Y14.5M-1994  
THIS PRINT IS THE CONFIDENTIAL PROPERTY OF REELL PRECISION MFG.



LEVEL	DESCRIPTION	DRAWN	DATE	APPROVED
DRAWN: CRD	DATE: 03FEB17	PART NO:		
CHECKED: CRD	DATE: 21JUN17	TITLE:		
APPROVED: CRD	DATE: 21JUN17	SALES DRAWING		
REVISED: 12MAY20	DIMS: mm			
REELL PRECISION MANUFACTURING 1259 WILLOW LAKE BOULEVARD SAINT PAUL, MINNESOTA 55110-5103, USA		DESCRIPTION: TI-160		REV: D
SCALE: 1:1		DO NOT SCALE DRAWING		SHEET 1 OF 5

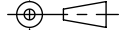
SPECIFICATION SUBJECT TO CHANGE


CATALOG CODE	DIRECTION	DYNAMIC TORQUE Nm	
		FORWARD	REVERSE
TI-160-4.00-F-01	ONE-WAY FORWARD	4 ± 1.2	1.8 MAX
TI-160-5.00-F-01	ONE-WAY FORWARD	5 ± 1.3	1.8 MAX
TI-160-6.00-F-01	ONE-WAY FORWARD	6 ± 1.2	1.8 MAX
TI-160-4.00-R-01	ONE-WAY REVERSE	1.8 MAX	4 ± 1.2
TI-160-5.00-R-01	ONE-WAY REVERSE	1.8 MAX	5 ± 1.3
TI-160-6.00-R-01	ONE-WAY REVERSE	1.8 MAX	6 ± 1.2



  
**TDS** Precision Products  
 TDS Precision Products GmbH  
 Industriestrasse 1a  
 CH-8157 Dielsdorf  
 T + 41 44 885 30 80  
 info@tds-pp.com  
 www.tds-pp.com

INTERPRET PRINT PER  
 ASME Y14.5M-1994  
 THIS PRINT IS THE  
 CONFIDENTIAL PROPERTY  
 OF REELL PRECISION MFG.

THIRD ANGLE PROJECTION  


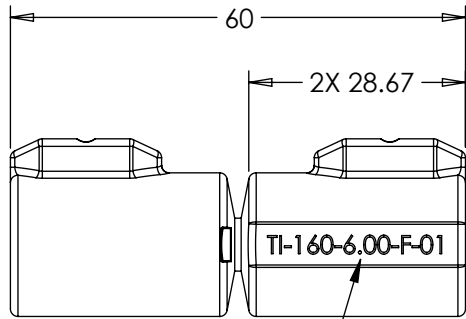
LEVEL	DESCRIPTION	DRAWN	DATE	APPROVED
DRAWN: CRD	DATE: 03FEB17	PART NO:		
CHECKED: CRD	DATE: 21JUN17	TITLE:		
APPROVED: CRD	DATE: 21JUN17	<h1 style="text-align: center;">SALES DRAWING</h1>		
REVISED: 12MAY20	DIMS: mm			
 REELL PRECISION MANUFACTURING 1259 WILLOW LAKE BOULEVARD SAINT PAUL, MINNESOTA 55110-5103, USA		DESCRIPTION: <b>TI-160</b>		REV: <b>D</b>
		SCALE: 1:1	DO NOT SCALE DRAWING	SHEET 2 OF 5

SPECIFICATION SUBJECT TO CHANGE

8 7 6 5 4 3 2 1

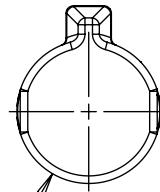
NOTES:

- 6. DIMENSIONAL TOLERANCES ARE BUILT INTO THE MOUNTING RECOMMENDATION SECTION. THEREFORE DIMENSIONS ON THIS PAGE ARE TO BE CONSIDERED REFERENCE.
- [7] ARROW INDICATES HIGH TORQUE DIRECTION FOR SPECIFIED CONFIGURATION.

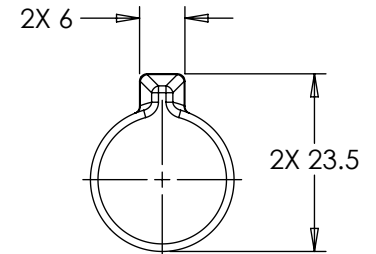
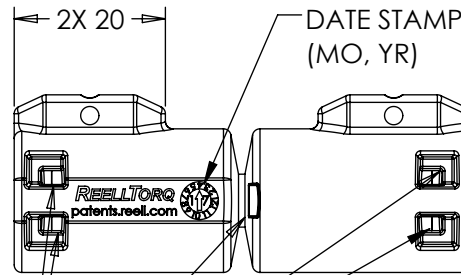


CATALOG CODE

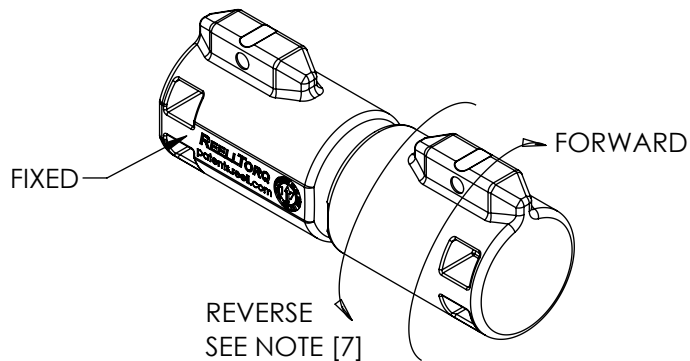
2X Ø 19



LUBRICANT MAY APPEAR OVER LIFE IN THESE FIVE LOCATIONS



R1TYP



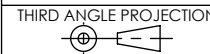
SPECIFICATION SUBJECT TO CHANGE

ALL DIMENSIONS REFERENCE SEE CAD MODEL FOR UNSPECIFIED FEATURES.



TDS Precision Products GmbH  
 Industriestrasse 1a  
 CH-8157 Dielsdorf  
 T + 41 44 885 30 80  
 info@tds-pp.com  
 www.tds-pp.com

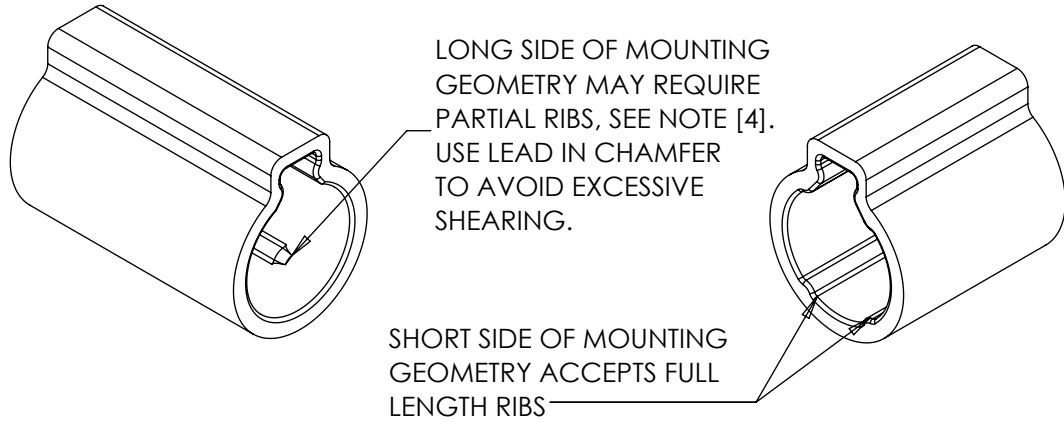
INTERPRET PRINT PER ASME Y14.5M-1994  
 THIS PRINT IS THE CONFIDENTIAL PROPERTY OF REELL PRECISION MFG.



LEVEL	DESCRIPTION		DRAWN	DATE	APPROVED
DRAWN: CRD	DATE: 03FEB17	PART NO:			
CHECKED: CRD	DATE: 21JUN17	TITLE:			
APPROVED: CRD	DATE: 21JUN17	<b>SALES DRAWING</b>			
REVISED: 12MAY20	DIMS: mm				
REELL PRECISION MANUFACTURING 1259 WILLOW LAKE BOULEVARD SAINT PAUL, MINNESOTA 55110-5103, USA		DESCRIPTION: <b>TI-160</b>		REV: <b>D</b>	
THIRD ANGLE PROJECTION		SCALE: 1:1	DO NOT SCALE DRAWING		SHEET 3 OF 5

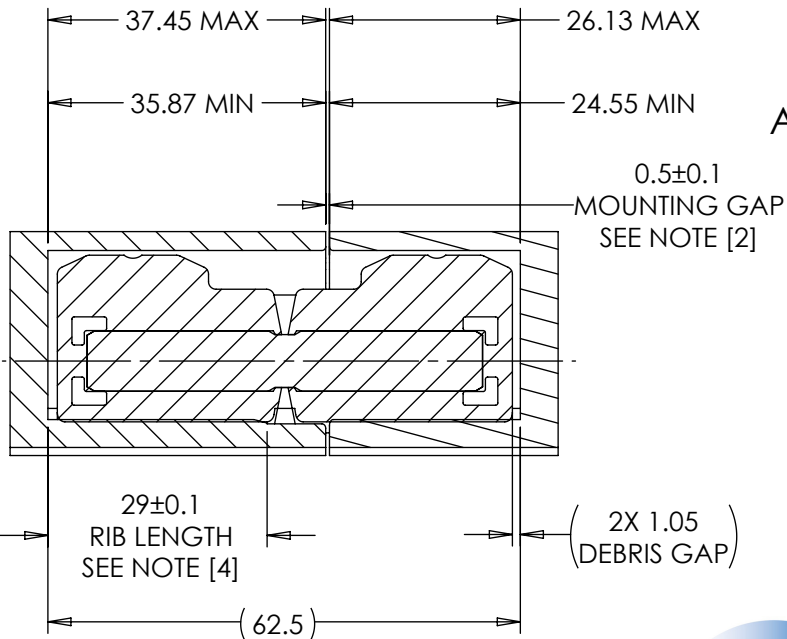
8 7 6 5 4 3 2 1

# MOUNTING RECOMMENDATION

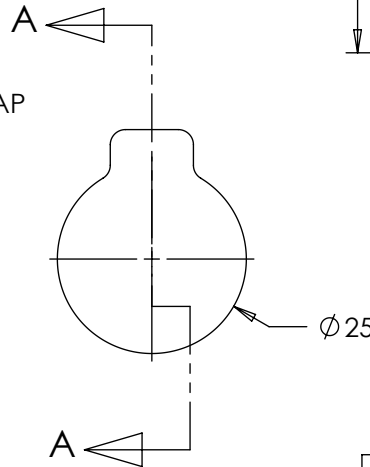
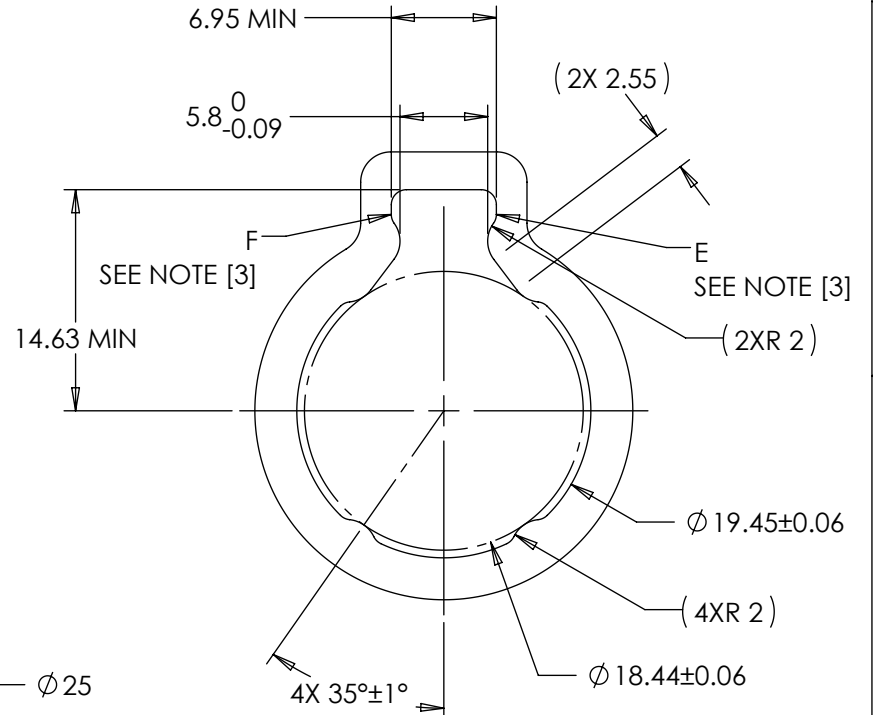


## NOTES:

- [1] DOUBLE THE NEGATIVE TOLERANCE WHEN PRESSING INTO PLASTIC.
- [2] LOCATE MOUNTING GAP OVER HINGE BODY FOR ADDITIONAL SUPPORT.
- [3] GEOMETRY BETWEEN POINTS E & F CCW MAY VARY IF DESIRED (CUTTER RELIEF).
- [4] LONG SIDE OF MOUNTING GEOMETRIES REQUIRE PARTIAL RIBS FOR METAL PARTS WITH  $\leq 1.0^\circ$  OF DRAFT, AND  $\leq 1.8^\circ$  FOR PLASTIC PARTS.



SECTION A-A

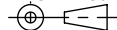


TDS Precision Products GmbH  
Industriestrasse 1a  
CH-8157 Dielsdorf

T + 41 44 885 30 80  
info@tds-pp.com  
www.tds-pp.com

INTERPRET PRINT PER  
ASME Y14.5M-1994  
THIS PRINT IS THE  
CONFIDENTIAL PROPERTY  
OF REELL PRECISION MFG.

THIRD ANGLE PROJECTION



LEVEL	DESCRIPTION	DRAWN	DATE	APPROVED
DRAWN: CRD	DATE: 03FEB17	PART NO:		
CHECKED: CRD	DATE: 21JUN17	TITLE:		
APPROVED: CRD	DATE: 21JUN17	REVISED: 12MAY20 DIMS: mm		
		<b>SALES DRAWING</b>		
		DESCRIPTION: TI-160		REV: D
REELL PRECISION MANUFACTURING 1259 WILLOW LAKE BOULEVARD SAINT PAUL, MINNESOTA 55110-5103, USA		SCALE: 1:1	DO NOT SCALE DRAWING	SHEET 4 OF 5

SPECIFICATION SUBJECT TO CHANGE

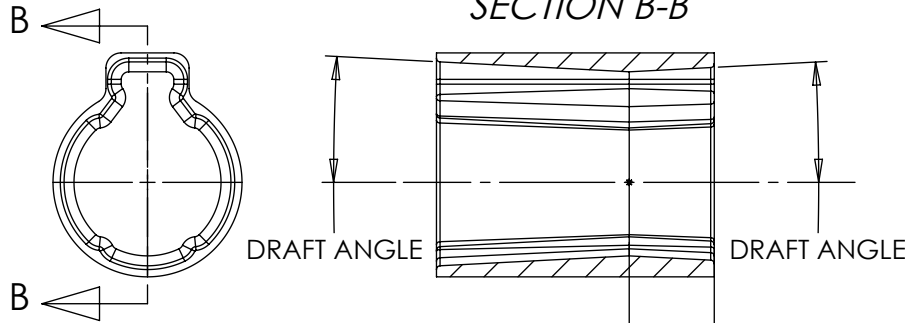
# MOUNTING RECOMMENDATION WITH DRAFT

**NOTES:**

- [1] WHEN DRAFTING BETWEEN 1° AND 2°:  
ADD 0.1 mm OF INTERFERENCE OVER THE TAB, FROM 5.8 NOM. TO 5.7 NOM., TO GUARANTEE CONTACT OVER FULL LENGTH OF THE TAB.
- [2] NEUTRAL PLANE INDICATES THE PLANE OF NOMINAL INTERFERENCE RECOMMENDED ON PREVIOUS PAGE.
- 3. LARGE DRAFT ANGLES WILL REDUCE RADIAL LOAD SUPPORT.

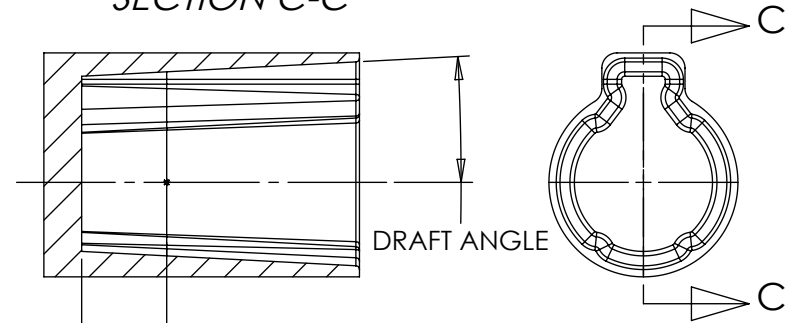
## DOUBLE PULL DRAFTS

### SECTION B-B



## SINGLE PULL DRAFTS

### SECTION C-C



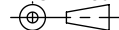
11.25±0.1  
NEUTRAL PLANE FROM END,  
LONG AND SHORT GEOMETRY  
SEE NOTES [1] & [2]



TDS Precision Products GmbH  
Industriestrasse 1a  
CH-8157 Dielsdorf  
T + 41 44 885 30 80  
info@tds-pp.com  
www.tds-pp.com

INTERPRET PRINT PER  
ASME Y14.5M-1994  
THIS PRINT IS THE  
CONFIDENTIAL PROPERTY  
OF REELL PRECISION MFG.

THIRD ANGLE PROJECTION



LEVEL	DESCRIPTION	DRAWN	DATE	APPROVED
DRAWN: CRD	DATE: 03FEB17	PART NO:		
CHECKED: CRD	DATE: 21JUN17	TITLE:		
APPROVED: CRD	DATE: 21JUN17	SALES DRAWING		
REVISED: 12MAY20	DIMS: mm			
		DESCRIPTION: TI-160		REV: D
		SCALE: 1:1	DO NOT SCALE DRAWING	SHEET 5 OF 5

SPECIFICATION SUBJECT TO CHANGE