

CATALOG CODE TI-150-X.X-X-XX

TORQUE N-m
2.0
3.0
4.0

DIRECTION
F - ONE WAY FORWARD
R - ONE WAY REVERSE

FIN NO.
01

NOTES:

1. APPLICATION CONDITIONS REFERENCE USER MUST DETERMINE FITNESS FOR USE IN APPLICATION.
2. LIFE: 25,000 CYCLES.
ONE CYCLE = 120° OPEN/ 120° CLOSED
FIVE(5) CYCLES PER MINUTE MAX.
3. MATERIAL:
BRACKET AND SHAFT END ARE ENGINEERED PLASTIC
SHAFT AND TORQUE ELEMENT ARE HARDENED STEEL
MINERAL OIL BASED LUBRICANT
4. TAB MAY BE MISALIGNED DUE TO SHIPPING. MISALIGNMENT IS EASILY FIXED BY ROTATING THE BRACKET IN THE TORQUE FREE DIRECTION.
5. STATIC TORQUE IS NORMALLY WITHIN 10% OF DYNAMIC TORQUE.



TDS Precision Products GmbH
Industriestrasse 1a
CH-8157 Dielsdorf
T + 41 44 885 30 80
info@tds-pp.com
www.tds-pp.com



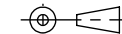
REELL PRECISION MANUFACTURING
1259 WILLOW LAKE BOULEVARD
SAINT PAUL, MINNESOTA 55110-5103, USA

THIS PRINT IS THE CONFIDENTIAL PROPERTY
OF REELL PRECISION MFG.

INTERPRET PRINT PER ASME Y14.5M-2009

ECO NO: 02772
APPROVED BY: MICHAEL BEALE
APPROVED DATE: 13JUL20
PROJECT NO: 101269
ENGINEER: MICHAEL BEALE
DRAWN BY: MICHAEL BEALE

THIRD ANGLE PROJECTION

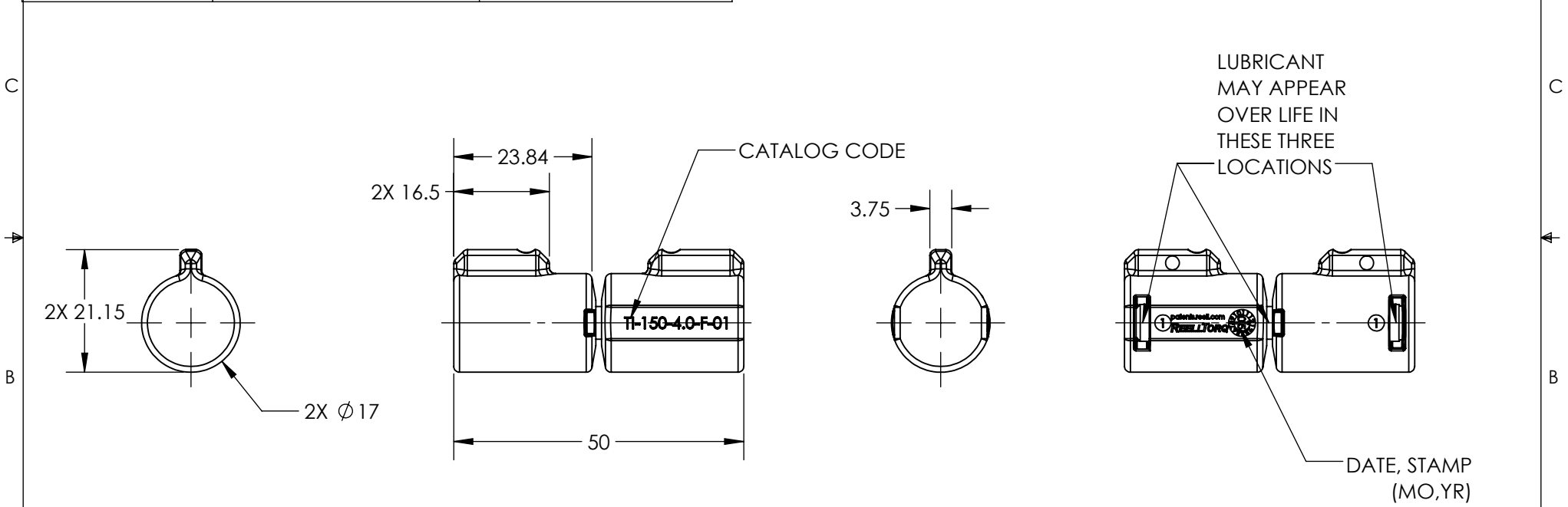


DIMENSIONS: mm

PART LIFECYCLE: RELEASED	
DEVELOPMENT CYCLE: PRODUCTION	
DESCRIPTION:	
<h1>SALES DRAWING</h1>	
PART NO:	TI-150
REV:	A
SCALE: 2:1	DO NOT SCALE DRAWING
SHEET 1 OF 4	

SPECIFICATION SUBJECT TO CHANGE

CATALOG CODE	DYNAMIC TORQUE FORWARD DIRECTION	DYNAMIC TORQUE REVERSE DIRECTION
	NOMINAL	NOMINAL
	Nm	Nm
TI-150-2.0-F-01	2.0±0.6	1MAX
TI-150-3.0-F-01	3.0±0.9	1MAX
TI-150-4.0-F-01	4.0±1.2	1MAX
TI-150-2.0-R-01	1MAX	2.0±0.6
TI-150-3.0-R-01	1MAX	3.0±0.9
TI-150-4.0-R-01	1MAX	4.0±1.2



ALL DIMENSIONS REFERENCE
SEE CAD MODEL FOR UNSPECIFIED FEATURES.

TDS Precision Products
TDS Precision Products GmbH
Industriestrasse 1a
CH-8157 Dielsdorf
T + 41 44 885 30 80
info@tds-pp.com
www.tds-pp.com

	ECO NO: 02772	PART LIFECYCLE: RELEASED
	APPROVED BY: MICHAEL BEALE	DEVELOPMENT CYCLE: PRODUCTION
	APPROVED DATE: 13JUL20	DESCRIPTION:
	PROJECT NO: 101269	SALES DRAWING
REELL PRECISION MANUFACTURING 1259 WILLOW LAKE BOULEVARD SAINT PAUL, MINNESOTA 55110-5103, USA	ENGINEER: MICHAEL BEALE	PART NO: TI-150
THIS PRINT IS THE CONFIDENTIAL PROPERTY OF REELL PRECISION MFG.	DRAWN BY: MICHAEL BEALE	
INTERPRET PRINT PER ASME Y14.5M-2009	THIRD ANGLE PROJECTION 	SCALE: 1:1
	DIMENSIONS: mm	DO NOT SCALE DRAWING

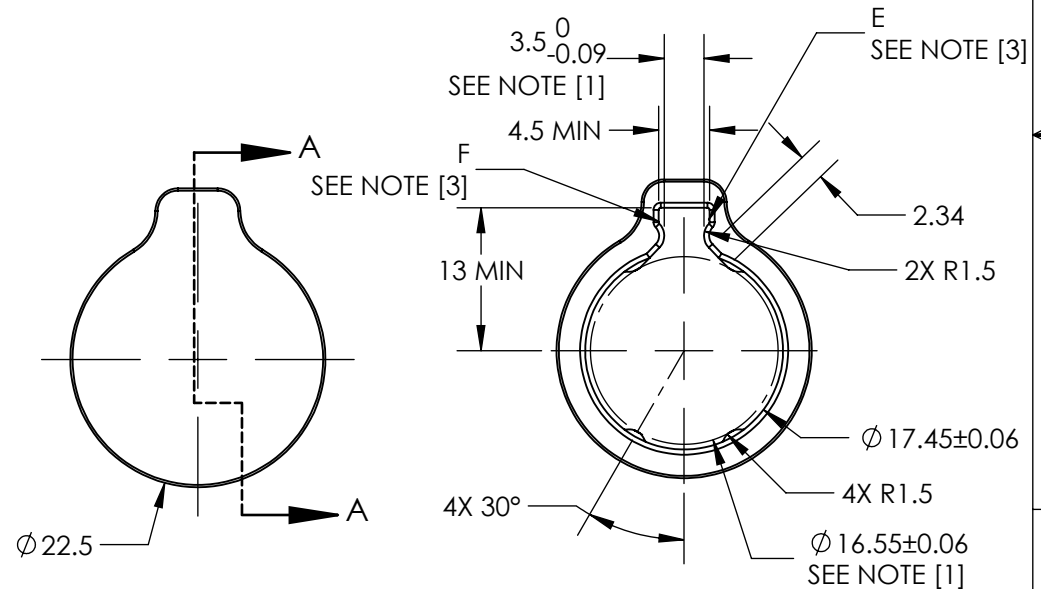
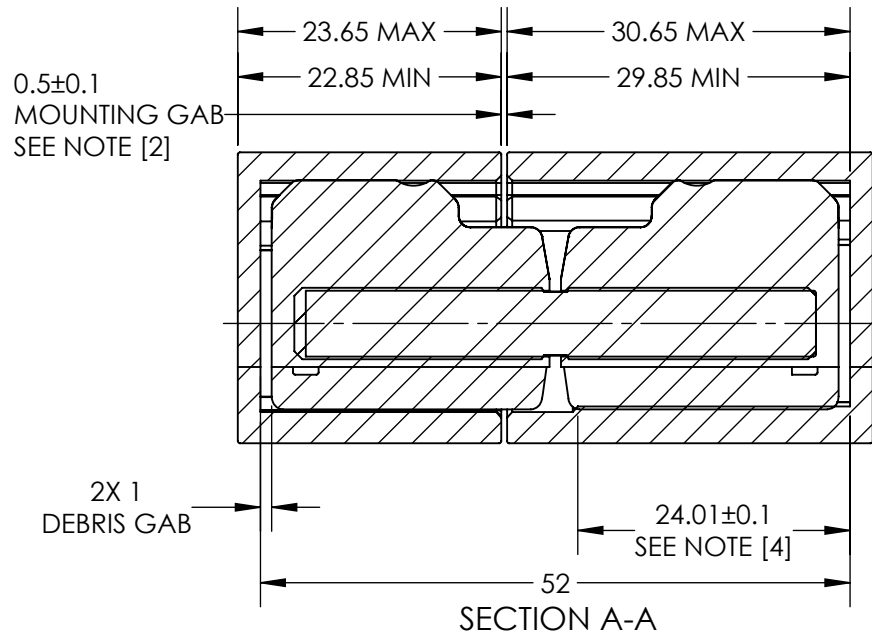
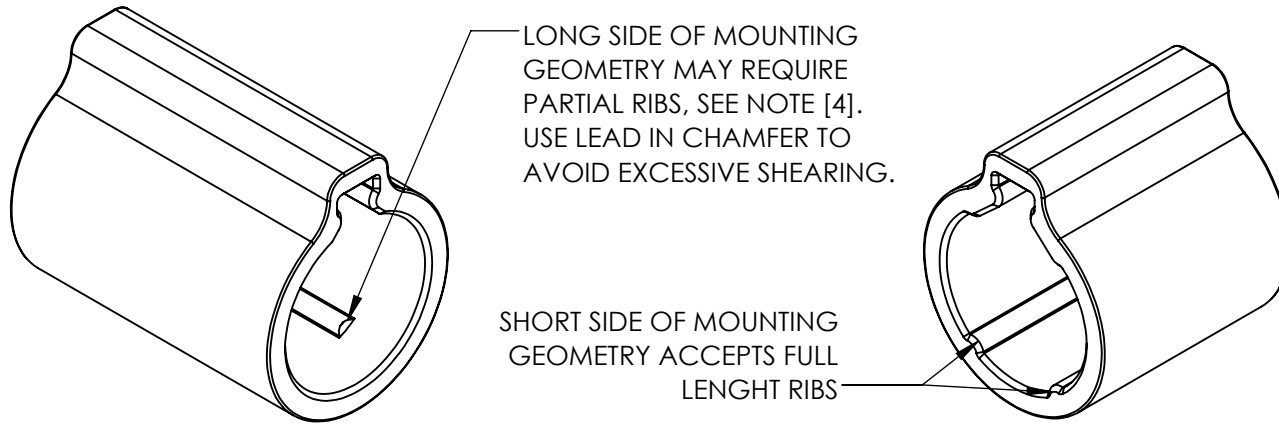
SPECIFICATIONS SUBJECT TO CHANGE

TI-150-X.X-X-01

MOUNTING RECOMMENDATION

NOTES:

- [1] DOUBLE THE NEGATIVE TOLERANCE WHEN PRESSING INTO PLASTIC.
- [2] LOCATE MOUNTING GAP OVER HINGE BODY FOR ADDITIONAL SUPPORT.
- [3] GEOMETRY BETWEEN POINTS E & F CCW MAY VARY IF DESIRED (CUTTER RELIEF).
- [4] LONG SIDE OF MOUNTING GEOMETRIES REQUIRE PARTIAL RIBS FOR METAL PARTS WITH $\leq 1.0^\circ$ OF DRAFT AND $\leq 1.8^\circ$ FOR PLASTIC PARTS.



	ECO NO: 02772	PART LIFECYCLE: RELEASED
	APPROVED BY: MICHAEL BEALE	DEVELOPMENT CYCLE: PRODUCTION
	APPROVED DATE: 13JUL20	DESCRIPTION:
	PROJECT NO: 101269	SALES DRAWING
REELL PRECISION MANUFACTURING 1259 WILLOW LAKE BOULEVARD SAINT PAUL, MINNESOTA 55110-5103, USA	ENGINEER: MICHAEL BEALE	PART NO: TI-150
THIS PRINT IS THE CONFIDENTIAL PROPERTY OF REELL PRECISION MFG.	DRAWN BY: MICHAEL BEALE	
INTERPRET PRINT PER ASME Y14.5M-2009	THIRD ANGLE PROJECTION 	SCALE: 3:2
	DIMENSIONS: mm	DO NOT SCALE DRAWING
		SHEET 3 OF 4

TI-150-X.X-X-01

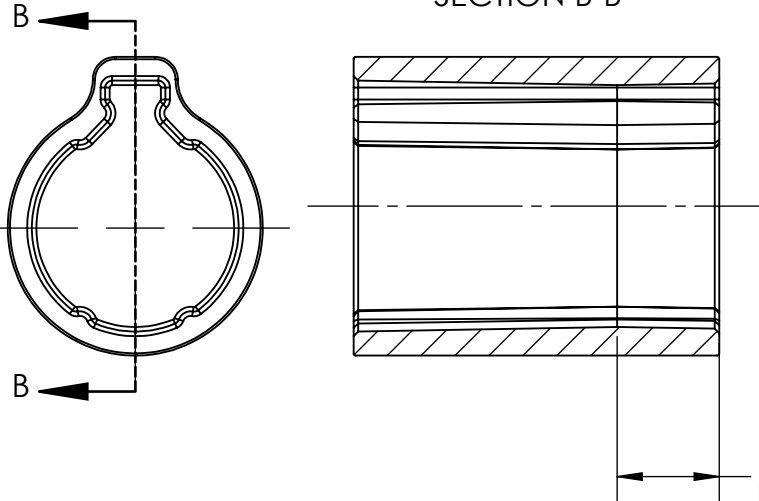
MOUNTING RECOMMENDATION WITH DRAFT

NOTES:

- [1] WHEN DRAFTING BETWEEN 1° AND 2°: ADD 0.1 mm OF INTERFERENCE OVER THE TAB, FROM 3.5 NOM. TO 3.4 NOM. TO GUARANTEE CONTACT OVER FULL LENGTH OF THE TAB
- [2] NEUTRAL PLANE INDICATES THE PLANE OF NOMINAL INTERFERENCE RECOMMENDED ON PREVIOUS PAGE.
- 3. LARGE DRAFT ANGLES WILL REDUCE RADIAL LOAD SUPPORT.

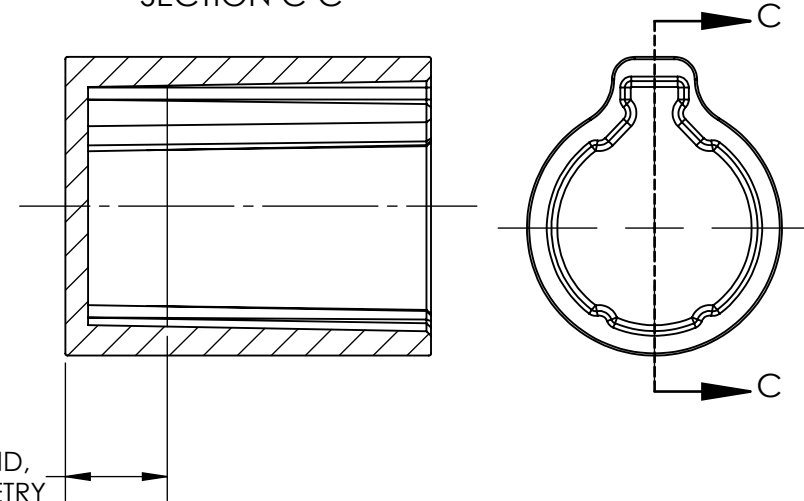
DOUBLE PULL DRAFTS

SECTION B-B



SINGLE PULL DRAFTS

SECTION C-C



9±0.25
NEUTRAL PLANE FROM END,
LONG AND SHORT GEOMETRY
SEE NOTE [1] & [2]

TDS Precision Products
TDS Precision Products GmbH
Industriestrasse 1a
CH-8157 Dielsdorf
T + 41 44 885 30 80
info@tds-pp.com
www.tds-pp.com



REELL PRECISION MANUFACTURING
1259 WILLOW LAKE BOULEVARD
SAINT PAUL, MINNESOTA 55110-5103, USA

THIS PRINT IS THE CONFIDENTIAL PROPERTY
OF REELL PRECISION MFG.

INTERPRET PRINT PER ASME Y14.5M-2009

ECO NO: 02772

APPROVED BY: MICHAEL BEALE

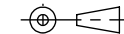
APPROVED DATE: 13JUL20

PROJECT NO: 101269

ENGINEER: MICHAEL BEALE

DRAWN BY: MICHAEL BEALE

THIRD ANGLE PROJECTION



DIMENSIONS: mm

PART LIFECYCLE: RELEASED

DEVELOPMENT CYCLE: PRODUCTION

DESCRIPTION:

SALES DRAWING

PART NO:

TI-150

REV:

A

SCALE: 3:2 DO NOT SCALE DRAWING

SHEET 4 OF 4