

# CATALOG CODE TI-140-X.X-XX

TORQUE Nm
- 1.4
- 1.8
- 2.2
- 2.6
- 3.0
- 3.4
- 3.8
- 4.2

FINS NO.
- 01
- 02

NOTES:

1. APPLICATION CONDITIONS REFERENCE USER MUST DETERMINE FITNESS FOR USE IN APPLICATION.
2. LIFE: 25,000 CYCLES.  
ONE CYCLE = 120° OPEN/120° CLOSED.  
FIVE(5) CYCLES PER MINUTE MAX.
3. MATERIAL:  
BRACKET AND SHAFT END ARE ENGINEERED PLASTIC  
SHAFT AND TORQUE ELEMENT ARE HARDENED STEEL
4. TABS ON HINGE TO BE ALIGNED AS SHOWN  $\pm 5^\circ$ .
5. STATIC TORQUE IS NORMALLY WITHIN 10% OF DYNAMIC TORQUE.

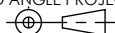


TDS Precision Products GmbH  
Industriestrasse 1a  
CH-8157 Dielsdorf

T + 41 44 885 30 80  
info@tds-pp.com  
www.tds-pp.com

INTERPRET PRINT PER  
ASME Y14.5M-1994  
THIS PRINT IS THE  
CONFIDENTIAL PROPERTY  
OF REELL PRECISION MFG.

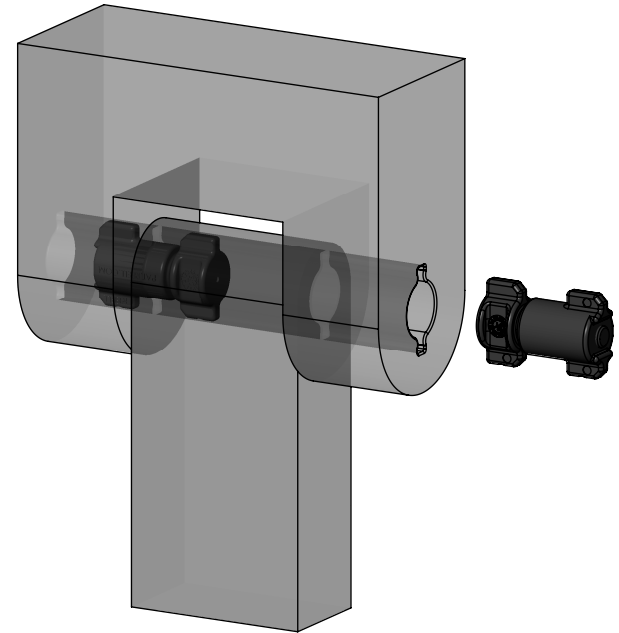
THIRD ANGLE PROJECTION



LEVEL	DESCRIPTION	DRAWN	DATE	APPROVED
DRAWN: HMA	DATE: 17JAN13	PART NO.:		
CHECKED: STK	DATE: 01MAR13	TITLE:		
APPROVED: STK	DATE: 01MAR13	SALES DRAWING		
REVISED: 07MAY20	DIMS: mm			
REELL PRECISION MANUFACTURING 1259 WILLOW LAKE BOULEVARD SAINT PAUL, MINNESOTA 55110-5103, USA		DESCRIPTION: TI-140		REV: N
SCALE: 1:1		DO NOT SCALE DRAWING		SHEET 1 OF 5

SPECIFICATIONS SUBJECT TO CHANGE

CATALOG CODE		TORQUE CODE	DYNAMIC TORQUE Nm
ONE FIN	TWO FINS		
TI-140-1.4-01	TI-140-1.4-02	14	1.4±0.42
TI-140-1.8-01	TI-140-1.8-02	18	1.8±0.45
TI-140-2.2-01	TI-140-2.2-02	22	2.2±0.44
TI-140-2.6-01	TI-140-2.6-02	26	2.6±0.52
TI-140-3.0-01	TI-140-3.0-02	30	3.0±0.60
TI-140-3.4-01	TI-140-3.4-02	34	3.4±0.68
TI-140-3.8-01	TI-140-3.8-02	38	3.8±0.76
TI-140-4.2-01	TI-140-4.2-02	42	4.2±0.84

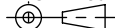


TDS Precision Products GmbH  
Industriestrasse 1a  
CH-8157 Dielsdorf

T + 41 44 885 30 80  
info@tds-pp.com  
www.tds-pp.com

INTERPRET PRINT PER  
ASME Y14.5M-1994  
THIS PRINT IS THE  
CONFIDENTIAL PROPERTY  
OF REELL PRECISION MFG.

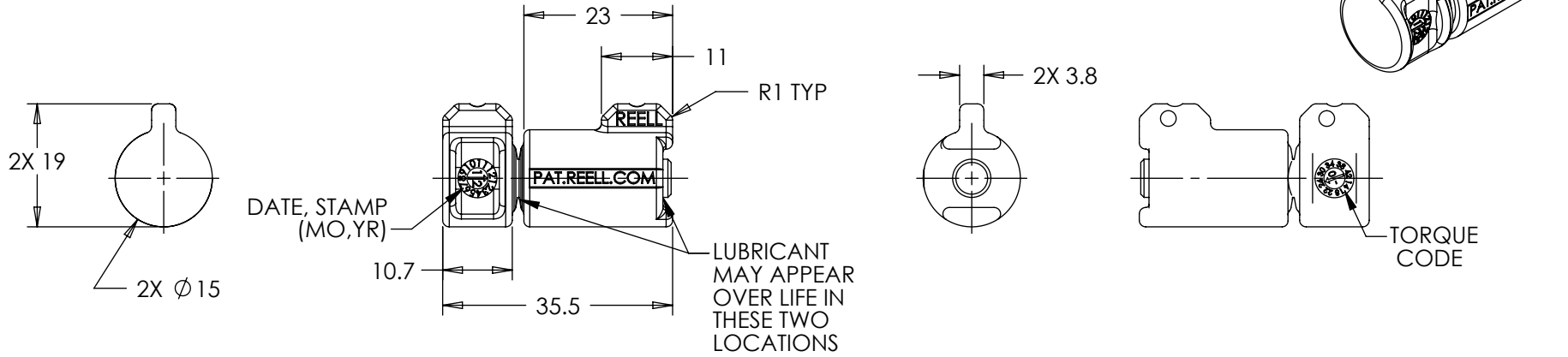
THIRD ANGLE PROJECTION



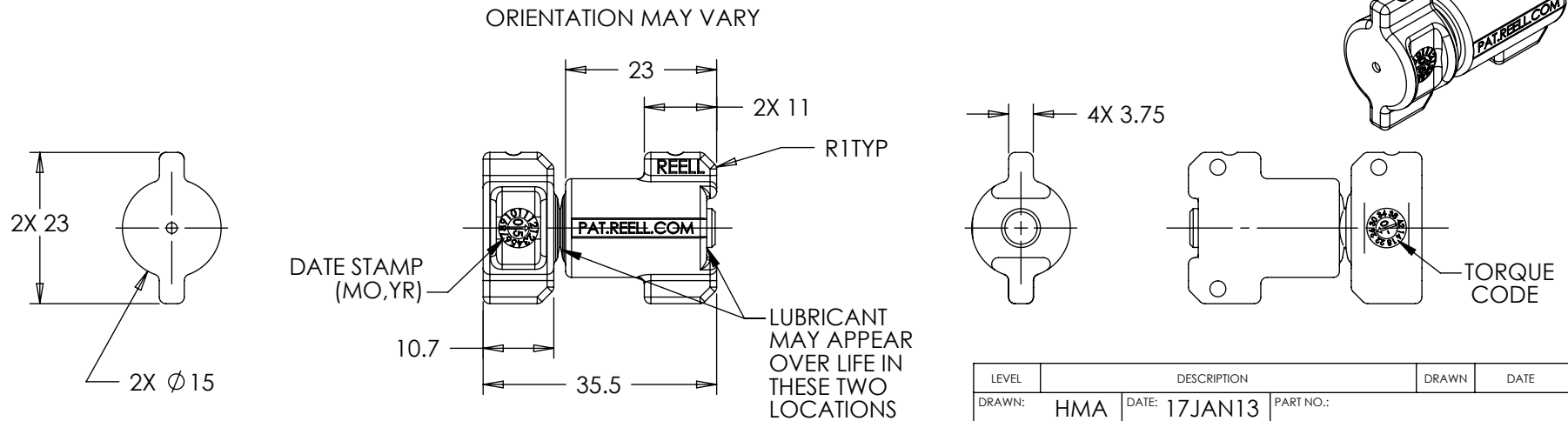
LEVEL	DESCRIPTION		DRAWN	DATE	APPROVED
DRAWN:	HMA	DATE: 17JAN13	PART NO.:		
CHECKED:	STK	DATE: 01MAR13	TITLE:		
APPROVED:	STK	DATE: 01MAR13	<b>SALES DRAWING</b>		
REVISED:	07MAY20	DIMS: mm			
			DESCRIPTION:		REV:
			TI-140		N
SCALE: 1:2		DO NOT SCALE DRAWING		SHEET 2 OF 5	

SPECIFICATIONS SUBJECT TO CHANGE

# TI -140-X.X-01



# TI -140-X.X-02

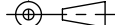


ALL DIMENSIONS REFERENCE  
SEE CAD MODEL FOR UNSPECIFIED FEATURES.

SPECIFICATIONS SUBJECT TO CHANGE

INTERPRET PRINT PER  
ASME Y14.5M-1994  
THIS PRINT IS THE  
CONFIDENTIAL PROPERTY  
OF REELL PRECISION MFG.

THIRD ANGLE PROJECTION

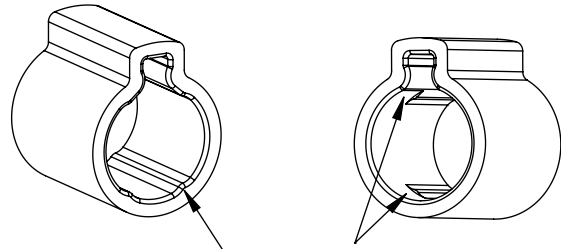


LEVEL	DESCRIPTION		DRAWN	DATE	APPROVED
DRAWN:	HMA	DATE: 17JAN13	PART NO.:		
CHECKED:	STK	DATE: 01MAR13	TITLE:		
APPROVED:	STK	DATE: 01MAR13	SALES DRAWING		
REVISED:	07MAY20	DIMS: mm	DESCRIPTION: TI-140		
REELL PRECISION MANUFACTURING 1259 WILLOW LAKE BOULEVARD SAINT PAUL, MINNESOTA 55110-5103, USA		REV: N		SCALE: 1:1	
		DO NOT SCALE DRAWING		SHEET 3 OF 5	

# TI -140-X.X-01 MOUNTING RECOMMENDATION

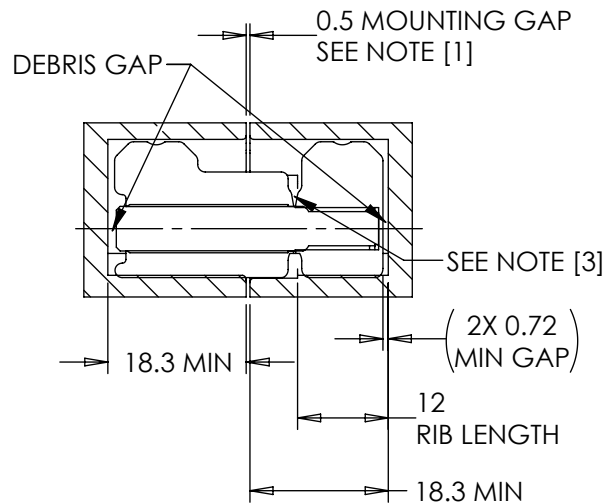
NOTES:

- [1] LOCATE MOUNTING GAP OVER HINGE BODY FOR ADDITIONAL SUPPORT.
- [2] GEOMETRY BETWEEN POINTS E & F CCW MAY VARY IF DESIRED (CUTTER RELIEF).
- [3] INSERT GAP MAY CHANGE DURING INSTALLATION.

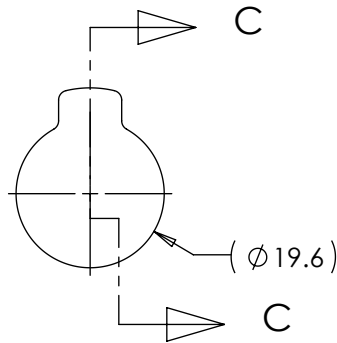


LONG SIDE OF INSERT  
ACCEPTS FULL  
LENGTH RIBS

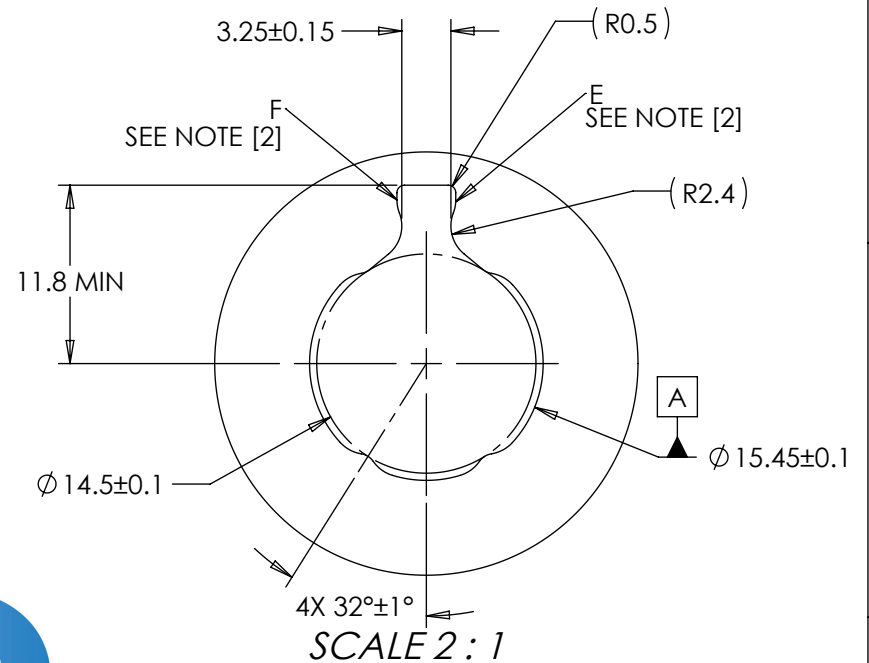
SHORT SIDE OF INSERT  
REQUIRES PARTIAL  
RIB LENGTH



SECTION C-C



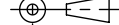
## PRESS FIT PROFILE



TDS Precision Products GmbH  
Industriestrasse 1a  
CH-8157 Dielsdorf  
T + 41 44 885 30 80  
info@tds-pp.com  
www.tds-pp.com

INTERPRET PRINT PER  
ASME Y14.5M-1994  
THIS PRINT IS THE  
CONFIDENTIAL PROPERTY  
OF REELL PRECISION MFG.

THIRD ANGLE PROJECTION



LEVEL	DESCRIPTION		DRAWN	DATE	APPROVED
DRAWN:	HMA	DATE: 17JAN13	PART NO.:		
CHECKED:	STK	DATE: 01MAR13	TITLE:		
APPROVED:	STK	DATE: 01MAR13	SALES DRAWING		
REVISED:	07MAY20	DIMS: mm			
REELL PRECISION MANUFACTURING 1259 WILLOW LAKE BOULEVARD SAINT PAUL, MINNESOTA 55110-5103, USA			DESCRIPTION: TI-140		REV: N
SCALE: 1:1		DO NOT SCALE DRAWING		SHEET 4 OF 5	

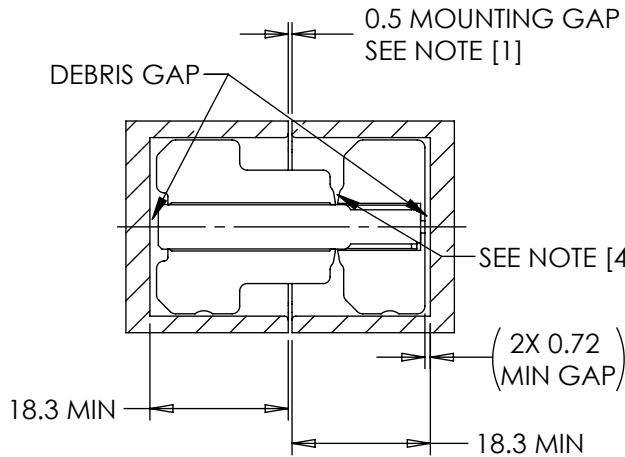
SPECIFICATIONS SUBJECT TO CHANGE

# TI -140-X.X-02 MOUNTING RECOMMENDATION

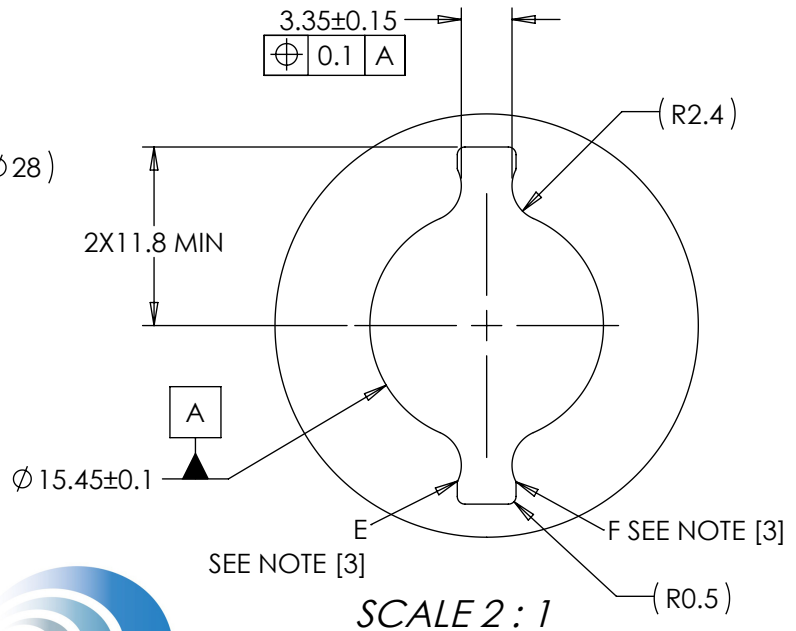
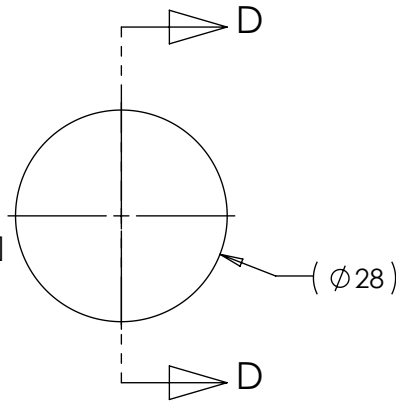
NOTES:

- [1] LOCATE MOUNTING GAP OVER HINGE BODY FOR ADDITIONAL SUPPORT.
2. TWO FIN TORQUE INSERTS CAN BE INSERTED EITHER ORIENTATION.
- [3] GEOMETRY BETWEEN POINTS E & F CCW MAY VARY IF DESIRED (CUTTER RELIEF).
- [4] INSERT GAP MAY CHANGE DURING INSTALLATION.

## PRESS FIT PROFILE



SECTION D-D



**TDS** Precision Products

TDS Precision Products GmbH  
Industriestrasse 1a  
CH-8157 Dielsdorf

T + 41 44 885 30 80  
info@tds-pp.com  
www.tds-pp.com

INTERPRET PRINT PER  
ASME Y14.5M-1994  
THIS PRINT IS THE  
CONFIDENTIAL PROPERTY  
OF REELL PRECISION MFG.

THIRD ANGLE PROJECTION

LEVEL	DESCRIPTION		DRAWN	DATE	APPROVED
DRAWN:	HMA	DATE:	17JAN13	PART NO.:	
CHECKED:	STK	DATE:	01MAR13	TITLE:	
APPROVED:	STK	DATE:	01MAR13	SALES DRAWING	
REVISED:	07MAY20	DIMS:	mm	DESCRIPTION:	
				TI-140	REV:
				N	
SCALE: 1:1		DO NOT SCALE DRAWING		SHEET 5 OF 5	



REELL PRECISION MANUFACTURING  
1259 WILLOW LAKE BOULEVARD  
SAINT PAUL, MINNESOTA 55110-5103, USA

SPECIFICATIONS SUBJECT TO CHANGE