

# CATALOG CODE TI-120-X.XX-XX

TORQUE N-m
-0.25
-0.35
-0.50
-0.65
-0.80
-1.00
-1.20

FINS NO.
- 01
- 02

NOTES:

1. APPLICATION CONDITIONS REFERENCE USER MUST DETERMINE FITNESS FOR USE IN APPLICATION.
2. LIFE: 25,000 CYCLES.  
ONE CYCLE = 120° OPEN/120° CLOSED.  
FIVE(5) CYCLES PER MINUTE MAX.
3. MATERIAL:  
BRACKET AND SHAFT END ARE ENGINEERED PLASTIC  
SHAFT AND TORQUE ELEMENT ARE HARDENED STEEL
4. TABS ON HINGE TO BE ALIGNED AS SHOWN ±5°.
5. STATIC TORQUE IS NORMALLY WITHIN 10% OF DYNAMIC TORQUE.

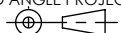


TDS Precision Products GmbH  
Industriestrasse 1a  
CH-8157 Dielsdorf

T + 41 44 885 30 80  
info@tds-pp.com  
www.tds-pp.com

INTERPRET PRINT PER  
ASME Y14.5M-1994  
THIS PRINT IS THE  
CONFIDENTIAL PROPERTY  
OF REELL PRECISION MFG.

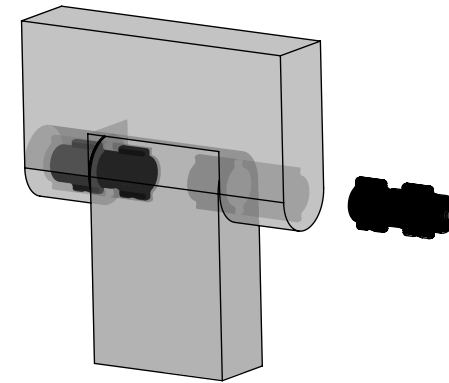
THIRD ANGLE PROJECTION



LEVEL	DESCRIPTION	DRAWN	DATE	APPROVED
DRAWN: HMA	DATE: 17JAN13	PART NO.:		
CHECKED: STK	DATE: 01MAR13	TITLE:		
APPROVED: STK	DATE: 01MAR13	SALES DRAWING		
REVISED: 07MAY20	DIMS: mm			
REELL PRECISION MANUFACTURING 1259 WILLOW LAKE BOULEVARD SAINT PAUL, MINNESOTA 55110-5103, USA		DESCRIPTION: TI-120		REV: N
SCALE: 1:1		DO NOT SCALE DRAWING		SHEET 1 OF 5

SPECIFICATIONS SUBJECT TO CHANGE


CATALOG CODE		TORQUE CODE	DYNAMIC TORQUE Nm
ONE FIN	TWO FINS		
TI-120-0.25-01	TI-120-0.25-02	2	0.25±0.11
TI-120-0.35-01	TI-120-0.35-02	3	0.35±0.12
TI-120-0.50-01	TI-120-0.50-02	4	0.50±0.13
TI-120-0.65-01	TI-120-0.65-02	6	0.65±0.13
TI-120-0.80-01	TI-120-0.80-02	8	0.80±0.16
TI-120-1.00-01	TI-120-1.00-02	10	1.00±0.20
TI-120-1.20-01	TI-120-1.20-02	12	1.20±0.24



  
**TDS** Precision Products  
 TDS Precision Products GmbH  
 Industriestrasse 1a  
 CH-8157 Dielsdorf  
 T + 41 44 885 30 80  
 info@tds-pp.com  
 www.tds-pp.com

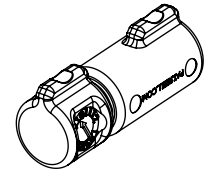
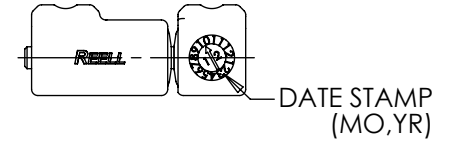
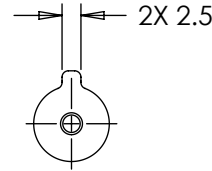
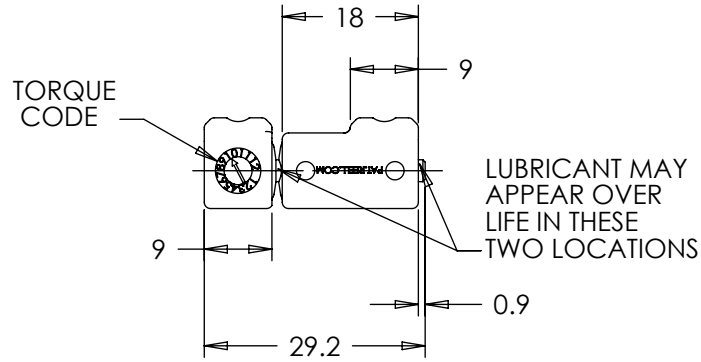
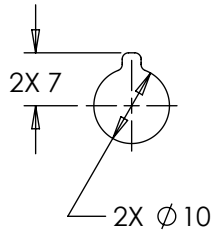
INTERPRET PRINT PER  
 ASME Y14.5M-1994  
 THIS PRINT IS THE  
 CONFIDENTIAL PROPERTY  
 OF REELL PRECISION MFG.

THIRD ANGLE PROJECTION  

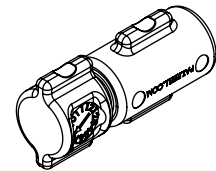
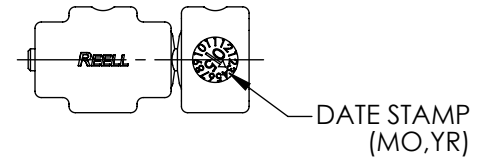
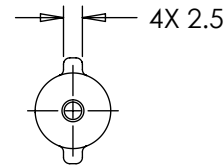
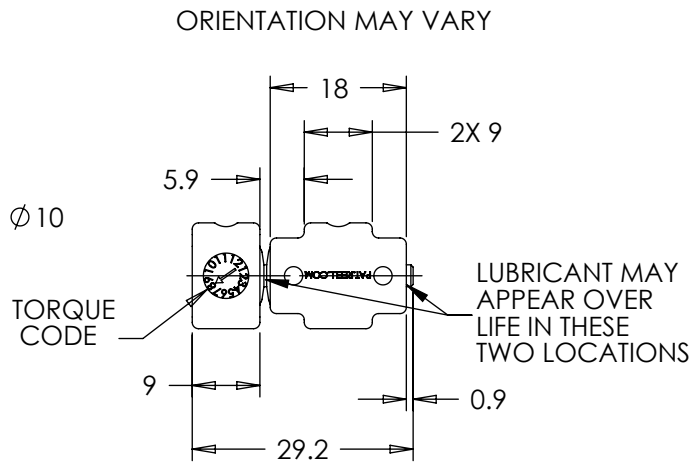
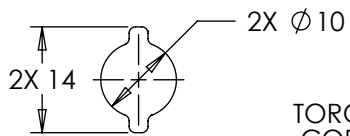

LEVEL	DESCRIPTION		DRAWN	DATE	APPROVED
DRAWN:	HMA	DATE: 17JAN13	PART NO.:		
CHECKED:	STK	DATE: 01MAR13	TITLE:		
APPROVED:	STK	DATE: 01MAR13	<b>SALES DRAWING</b>		
REVISED:	07MAY20	DIMS: mm			
			DESCRIPTION:		REV:
			TI-120		N
SCALE: 1:2		DO NOT SCALE DRAWING		SHEET 2 OF 5	

SPECIFICATIONS SUBJECT TO CHANGE

# TI -120-X.XX-01



# TI -120-X.XX-02

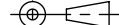


ALL DIMENSIONS REFERENCE  
SEE CAD MODEL FOR UNSPECIFIED FEATURES.

SPECIFICATIONS SUBJECT TO CHANGE

INTERPRET PRINT PER  
ASME Y14.5M-1994  
THIS PRINT IS THE  
CONFIDENTIAL PROPERTY  
OF REELL PRECISION MFG.

THIRD ANGLE PROJECTION

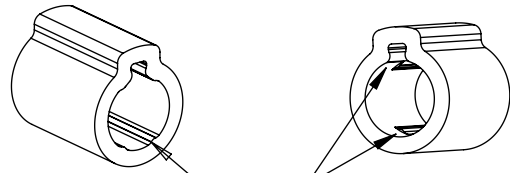


LEVEL	DESCRIPTION		DRAWN	DATE	APPROVED
DRAWN:	HMA	DATE: 17JAN13	PART NO.:		
CHECKED:	STK	DATE: 01MAR13	TITLE:		
APPROVED:	STK	DATE: 01MAR13	SALES DRAWING		
REVISED:	07MAY20	DIMS: mm	DESCRIPTION: TI-120		
 REELL PRECISION MANUFACTURING 1259 WILLOW LAKE BOULEVARD SAINT PAUL, MINNESOTA 55110-5103, USA			N		
			SCALE: 1:1	DO NOT SCALE DRAWING	SHEET 3 OF 5

# TI -120-X.XX-01 MOUNTING RECOMMENDATION

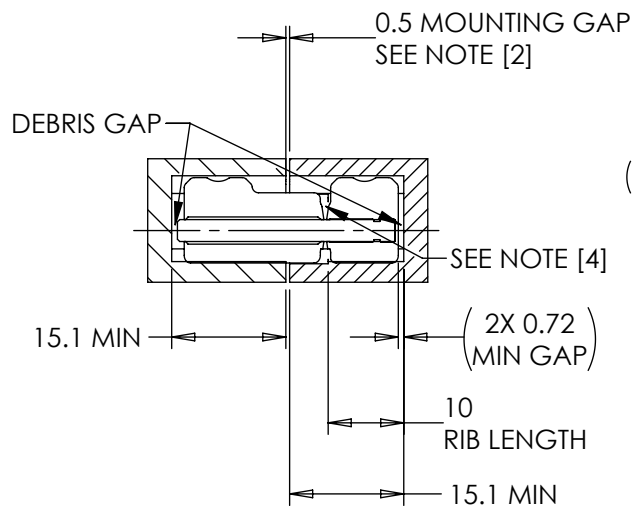
NOTES:

- [1] LOCATE MOUNTING GAP OVER HINGE BODY FOR ADDITIONAL SUPPORT.
- [2] GEOMETRY BETWEEN POINTS E & F CCW MAY VARY IF DESIRED (CUTTER RELIEF).
- [3] INSERT GAP MAY CHANGE DURING INSTALLATION.

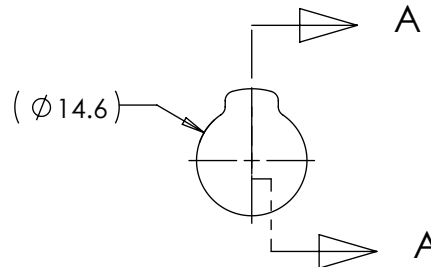


LONG SIDE OF INSERT  
ACCEPTS FULL  
LENGTH RIBS

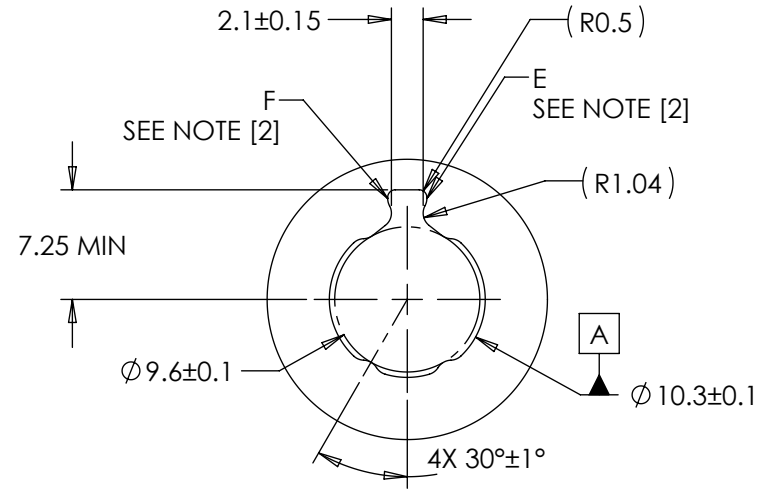
SHORT SIDE OF INSERT  
REQUIRES PARTIAL  
RIB LENGTH



SECTION A-A



## PRESS FIT PROFILE



SCALE 2:1



TDS Precision Products GmbH  
Industriestrasse 1a  
CH-8157 Dielsdorf

T + 41 44 885 30 80  
info@tds-pp.com  
www.tds-pp.com

INTERPRET PRINT PER  
ASME Y14.5M-1994  
THIS PRINT IS THE  
CONFIDENTIAL PROPERTY  
OF REELL PRECISION MFG.

THIRD ANGLE PROJECTION

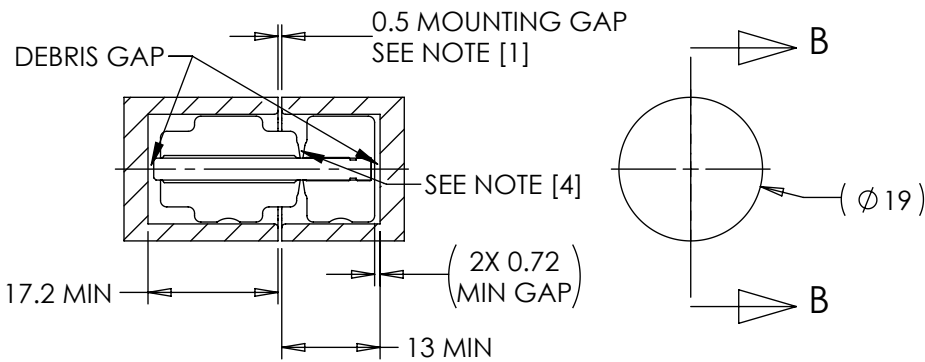
LEVEL	DESCRIPTION		DRAWN	DATE	APPROVED
DRAWN: HMA	DATE: 17JAN13	PART NO.:			
CHECKED: STK	DATE: 01MAR13	TITLE:			
APPROVED: STK	DATE: 01MAR13	SALES DRAWING			
REVISED: 07MAY20	DIMS: mm	DESCRIPTION: TI-120		REV: N	
REELL PRECISION MANUFACTURING 1259 WILLOW LAKE BOULEVARD SAINT PAUL, MINNESOTA 55110-5103, USA		SCALE: 1:1	DO NOT SCALE DRAWING	SHEET 4 OF 5	

SPECIFICATIONS SUBJECT TO CHANGE

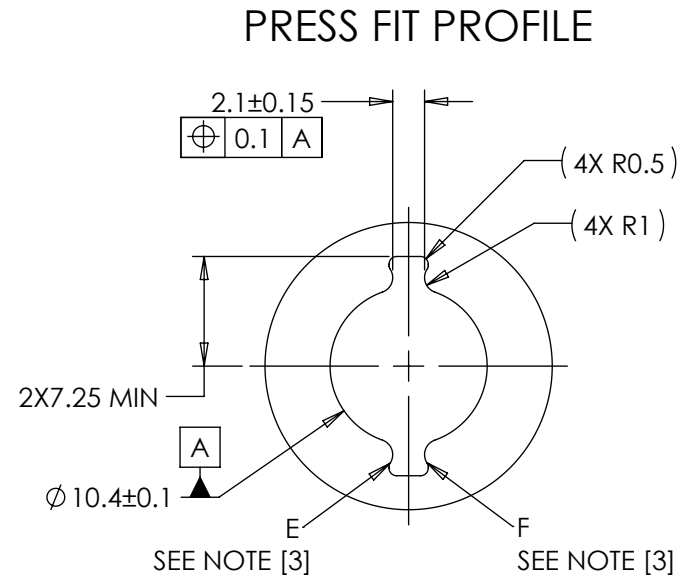
# TI -120-X.XX-02 MOUNTING RECOMMENDATION

## NOTES:

- [1] LOCATE MOUNTING GAP OVER HINGE BODY FOR ADDITIONAL SUPPORT.
2. TWO FIN TORQUE INSERTS CAN BE INSERTED EITHER ORIENTATION.
- [3] GEOMETRY BETWEEN POINTS E & F CCW MAY VARY IF DESIRED (CUTTER RELIEF).
- [4] INSERT GAP MAY CHANGE DURING INSTALLATION.



SECTION B-B



SCALE 2:1

SPECIFICATIONS SUBJECT TO CHANGE



TDS Precision Products GmbH  
Industriestrasse 1a  
CH-8157 Dielsdorf

T + 41 44 885 30 80  
info@tds-pp.com  
www.tds-pp.com

INTERPRET PRINT PER  
ASME Y14.5M-1994  
THIS PRINT IS THE  
CONFIDENTIAL PROPERTY  
OF REELL PRECISION MFG.

THIRD ANGLE PROJECTION

LEVEL	DESCRIPTION		DRAWN	DATE	APPROVED
DRAWN:	HMA	DATE: 17JAN13	PART NO.:		
CHECKED:	STK	DATE: 01MAR13	TITLE:		
APPROVED:	STK	DATE: 01MAR13	SALES DRAWING		
REVISED:	07MAY20	DIMS: mm			
REELL PRECISION MANUFACTURING 1259 WILLOW LAKE BOULEVARD SAINT PAUL, MINNESOTA 55110-5103, USA			DESCRIPTION: TI-120		REV: N
SCALE: 1:1		DO NOT SCALE DRAWING		SHEET 5 OF 5	