

CATALOG CODE

HTH-60-XX.X

TORQUE Nm
- 05.5
- 07.0
- 08.5
- 10.0
- 11.5

NOTES:

1. USER MUST DETERMINE FITNESS FOR USE IN APPLICATION.
2. APPLICATION CONDITIONS REFERENCE ENVIRONMENT CONDITIONS: -20°C TO +80°C UP TO 10% OF LIFE CYCLES AT HOT AND COLD CONDITIONS

LIFE: 25,000 CYCLES.
ONE CYCLE CONSISTS OF 135° CW AND 135° CCW
3. STATIC TORQUE IS NORMALLY WITHIN 10% OF DYNAMIC TORQUE.
4. MATERIAL:
BRACKET AND SHAFT END: ZINC
SHAFT AND TORQUE ELEMENT: HARDENED STEEL
MINERAL OIL BASED LUBRICANT

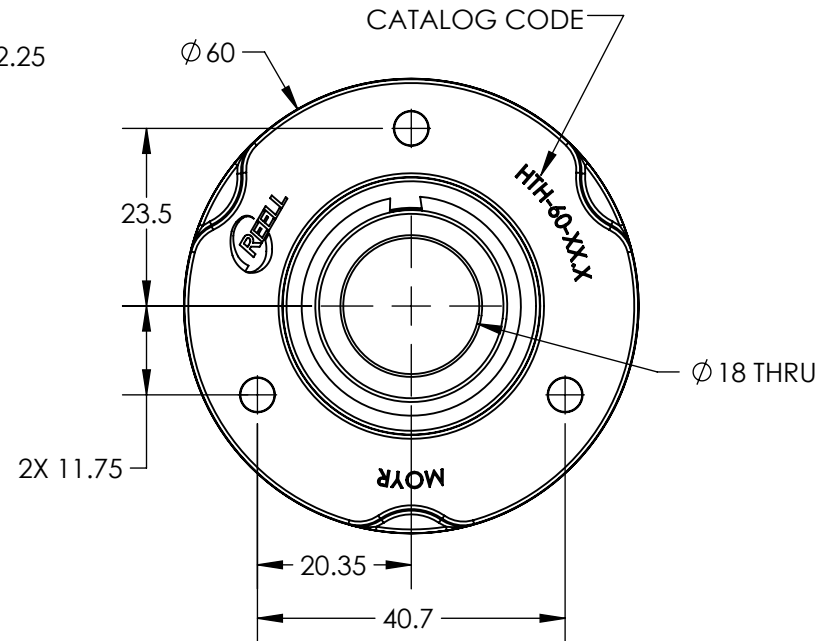
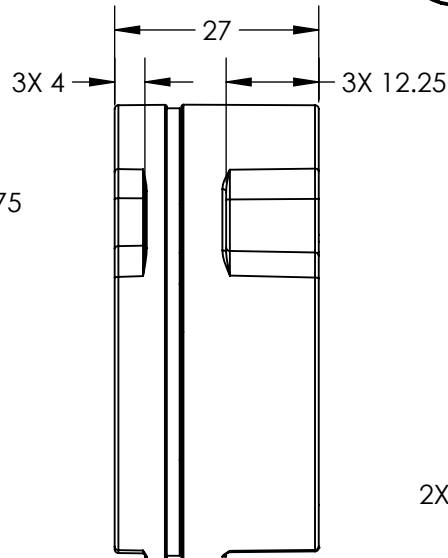
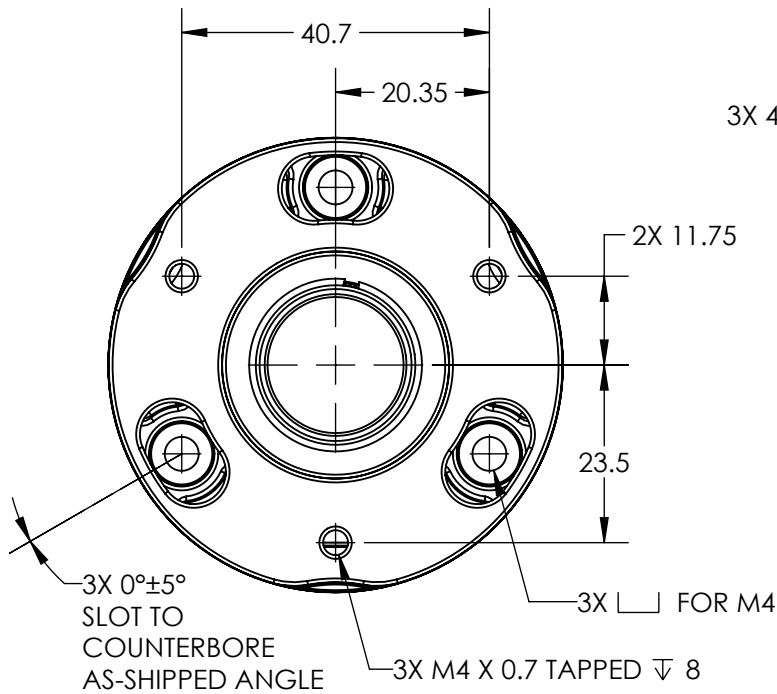
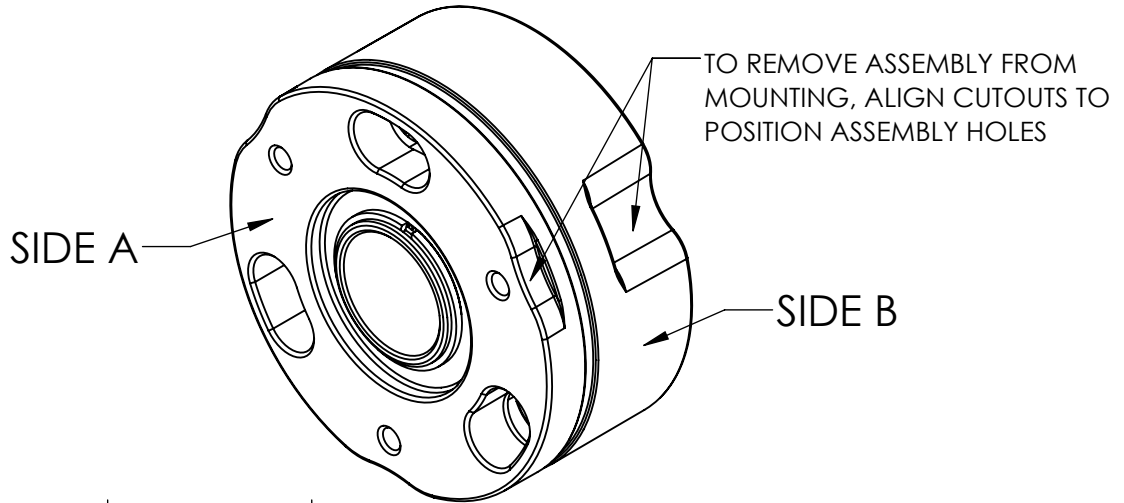


TDS Precision Products GmbH
Industriestrasse 1a
CH-8157 Dielsdorf

T + 41 44 885 30 80
info@tds-pp.com
www.tds-pp.com

	ECO NO: 05874	PART LIFECYCLE: RELEASED		
	APPROVED BY: MATT GRAMSE	DEVELOPMENT CYCLE: PRODUCTION		
	APPROVED DATE: 28MAR23	DESCRIPTION: SALES DRAWING		
	PROJECT NO: 101384			
REELL PRECISION MANUFACTURING 1259 WILLOW LAKE BOULEVARD SAINT PAUL, MINNESOTA 55110-5103, USA	ENGINEER: MATT GRAMSE	PART NO: HTH-60 REV: A		
THIS PRINT IS THE CONFIDENTIAL PROPERTY OF REELL PRECISION MFG.	DRAWN BY:			
INTERPRET PRINT PER ASME Y14.5M-2009	THIRD ANGLE PROJECTION 	SCALE: 1:1	DO NOT SCALE DRAWING	SHEET 1 OF 4

CATALOG CODE	DYNAMIC TORQUE
HTH-60-05.5	5.5 ± 1.75
HTH-60-07.0	7.0 ± 1.75
HTH-60-08.5	8.5 ± 2.00
HTH-60-10.0	10.0 ± 2.00
HTH-60-11.5	11.5 ± 2.30



TDS Precision Products GmbH
 Industriestrasse 1a
 CH-8157 Dielsdorf

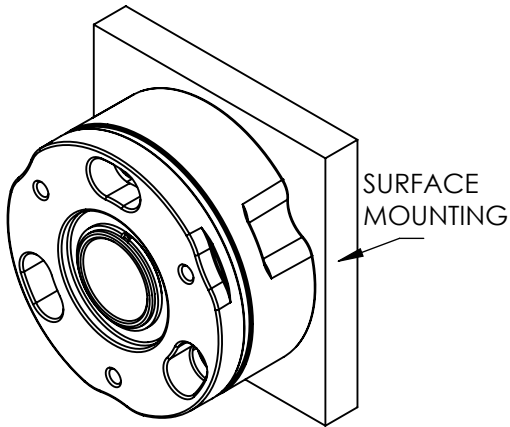
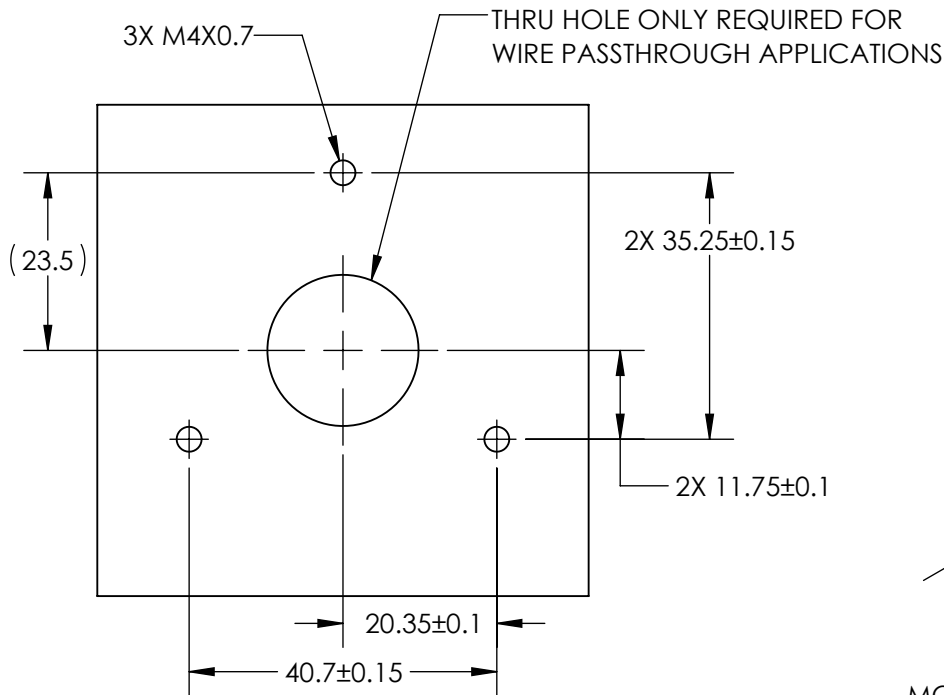
T + 41 44 885 30 80
 info@tds-pp.com
 www.tds-pp.com

 REELL PRECISION MANUFACTURING 1259 WILLOW LAKE BOULEVARD SAINT PAUL, MINNESOTA 55110-5103, USA	ECO NO: 05874	PART LIFECYCLE: RELEASED
	APPROVED BY: MATT GRAMSE	DEVELOPMENT CYCLE: PRODUCTION
	APPROVED DATE: 28MAR23	DESCRIPTION:
	PROJECT NO: 101384	<h1>SALES DRAWING</h1>
ENGINEER: MATT GRAMSE		
THIS PRINT IS THE CONFIDENTIAL PROPERTY OF REELL PRECISION MFG.	THIRD ANGLE PROJECTION 	PART NO: HTH-60
INTERPRET PRINT PER ASME Y14.5M-2009	DIMENSIONS: mm	SCALE: 1:1
		DO NOT SCALE DRAWING
		SHEET 2 OF 4

REV: A

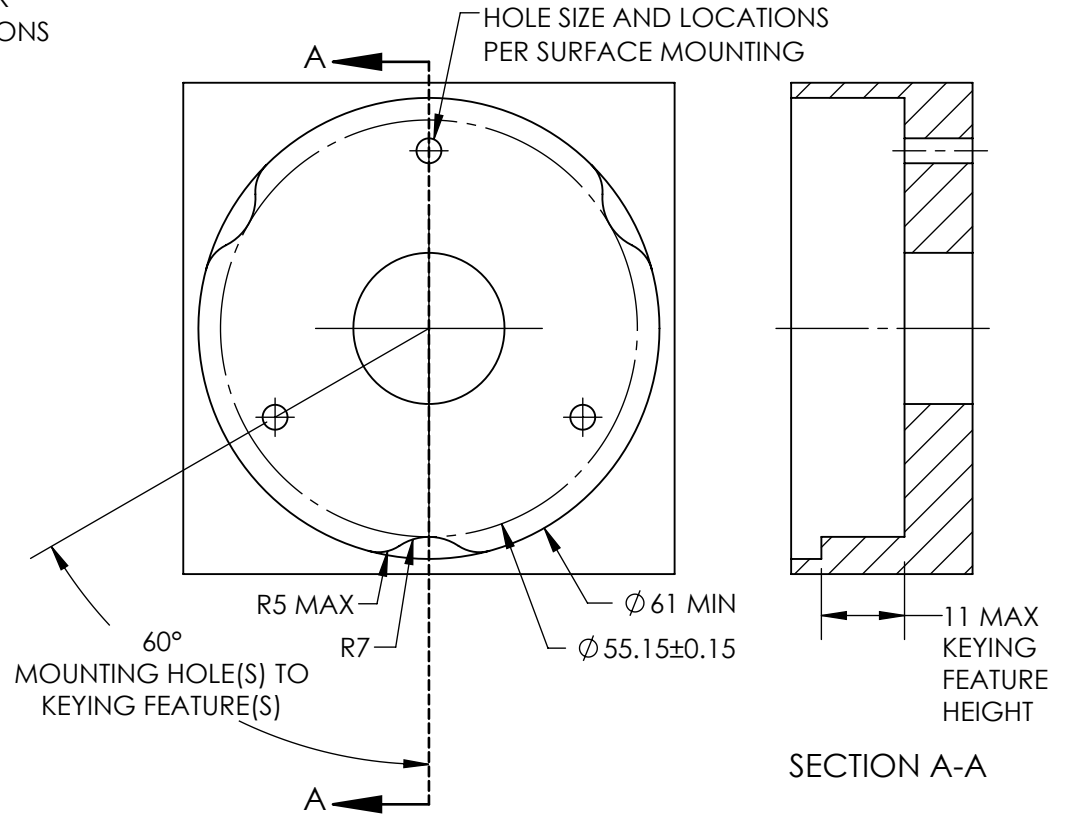
RECOMMENDED MOUNTING: MOUNT SIDE B FIRST

SURFACE MOUNTING



POCKET MOUNTING

KEYING FEATURES ALLOW FOR DROP-IN ASSEMBLY ALIGNMENT WITH MOUNTING HOLES. ONLY 1 KEYING FEATURE REQUIRED FOR ALIGNMENT.

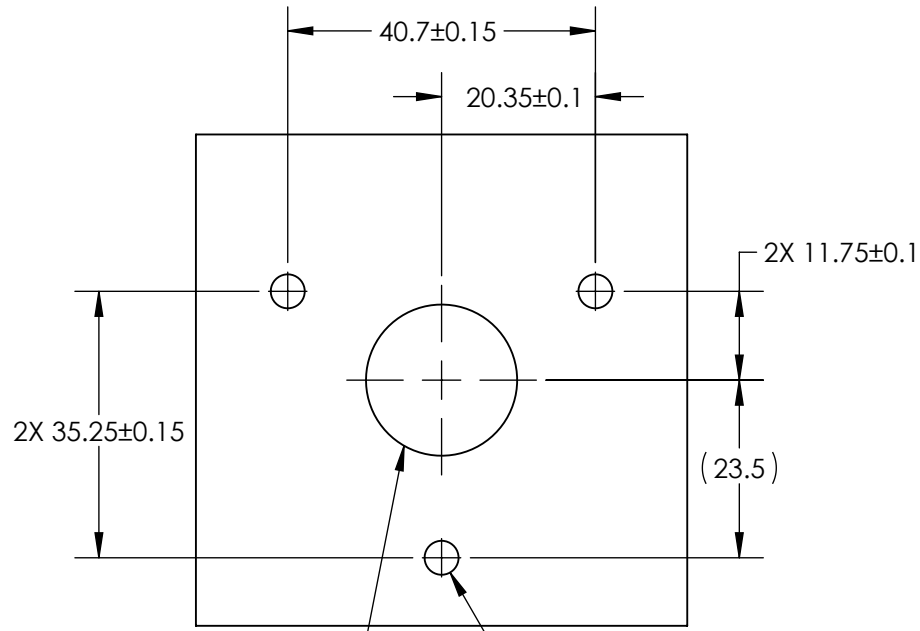


TDS Precision Products GmbH
 Industriestrasse 1a
 CH-8157 Dielsdorf

T + 41 44 885 30 80
 info@tds-pp.com
 www.tds-pp.com

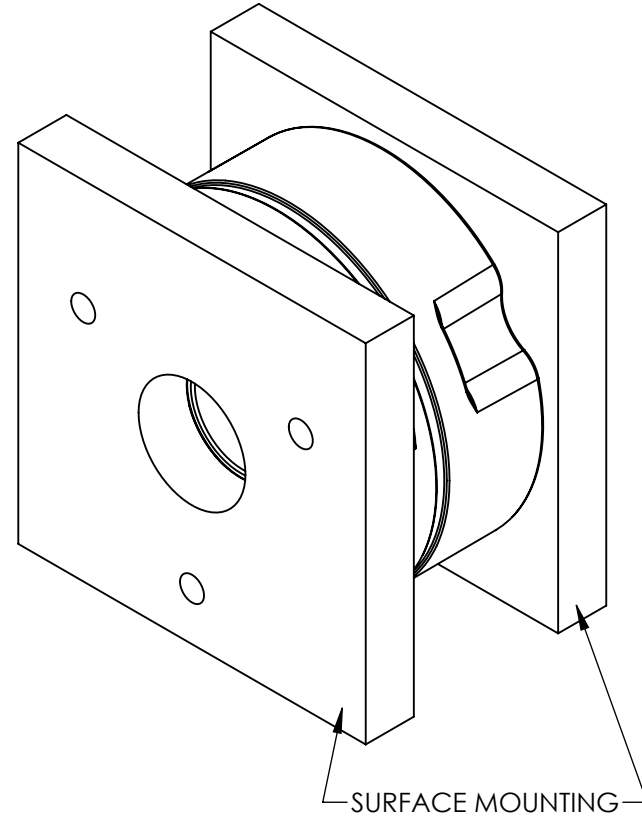
	ECO NO: 05874	PART LIFECYCLE: RELEASED	
	APPROVED BY: MATT GRAMSE	DEVELOPMENT CYCLE: PRODUCTION	
	APPROVED DATE: 28MAR23	DESCRIPTION:	
	PROJECT NO: 101384	<h2>SALES DRAWING</h2>	
ENGINEER: MATT GRAMSE			
THIS PRINT IS THE CONFIDENTIAL PROPERTY OF REELL PRECISION MFG.	THIRD ANGLE PROJECTION	PART NO: HTH-60	REV: A
INTERPRET PRINT PER ASME Y14.5M-2009		SCALE: 1:1	DO NOT SCALE DRAWING
	DIMENSIONS: mm		SHEET 3 OF 4

RECOMMENDED MOUNTING: MOUNT SIDE A LAST




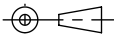
THRU HOLE ONLY REQUIRED FOR WIRE PASSTHROUGH APPLICATIONS

3X Ø 4.5



TDS Precision Products GmbH
Industriestrasse 1a
CH-8157 Dielsdorf

T + 41 44 885 30 80
info@tds-pp.com
www.tds-pp.com

 REELL PRECISION MANUFACTURING 1259 WILLOW LAKE BOULEVARD SAINT PAUL, MINNESOTA 55110-5103, USA	ECO NO: 05874	PART LIFECYCLE: RELEASED	
	APPROVED BY: MATT GRAMSE	DEVELOPMENT CYCLE: PRODUCTION	
	APPROVED DATE: 28MAR23	DESCRIPTION:	
	PROJECT NO: 101384	<h2>SALES DRAWING</h2>	
ENGINEER: MATT GRAMSE			
THIS PRINT IS THE CONFIDENTIAL PROPERTY OF REELL PRECISION MFG.	THIRD ANGLE PROJECTION 	PART NO: HTH-60	REV: A
INTERPRET PRINT PER ASME Y14.5M-2009	DIMENSIONS: mm	SCALE: 1:1	DO NOT SCALE DRAWING
			SHEET 4 OF 4