

# CATALOG CODE PHCS-X.XX-XX

## TORQUE Nm

0.44  
0.78  
1.22  
1.57  
2.01  
2.35  
2.79

## MOUNTING TYPE

01 - THROUGH  
02 - COUNTERSINK

DYNAMIC TORQUE	
NOMINAL (Nm)	TOLERANCE
0.44	±30%
0.78	±25%
1.22	±25%
1.57	±20%
2.01	±20%
2.35	±20%
2.79	±20%

PRODUCT TORQUE SPECIFICATION AT +20°C.

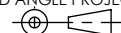


TDS Precision Products GmbH  
Industriestrasse 1a  
CH-8157 Dielsdorf

T + 41 44 885 30 80  
info@tds-pp.com  
www.tds-pp.com

INTERPRET PRINT PER  
ASME Y14.5M-1994  
THIS PRINT IS THE  
CONFIDENTIAL PROPERTY  
OF REELL PRECISION MFG.

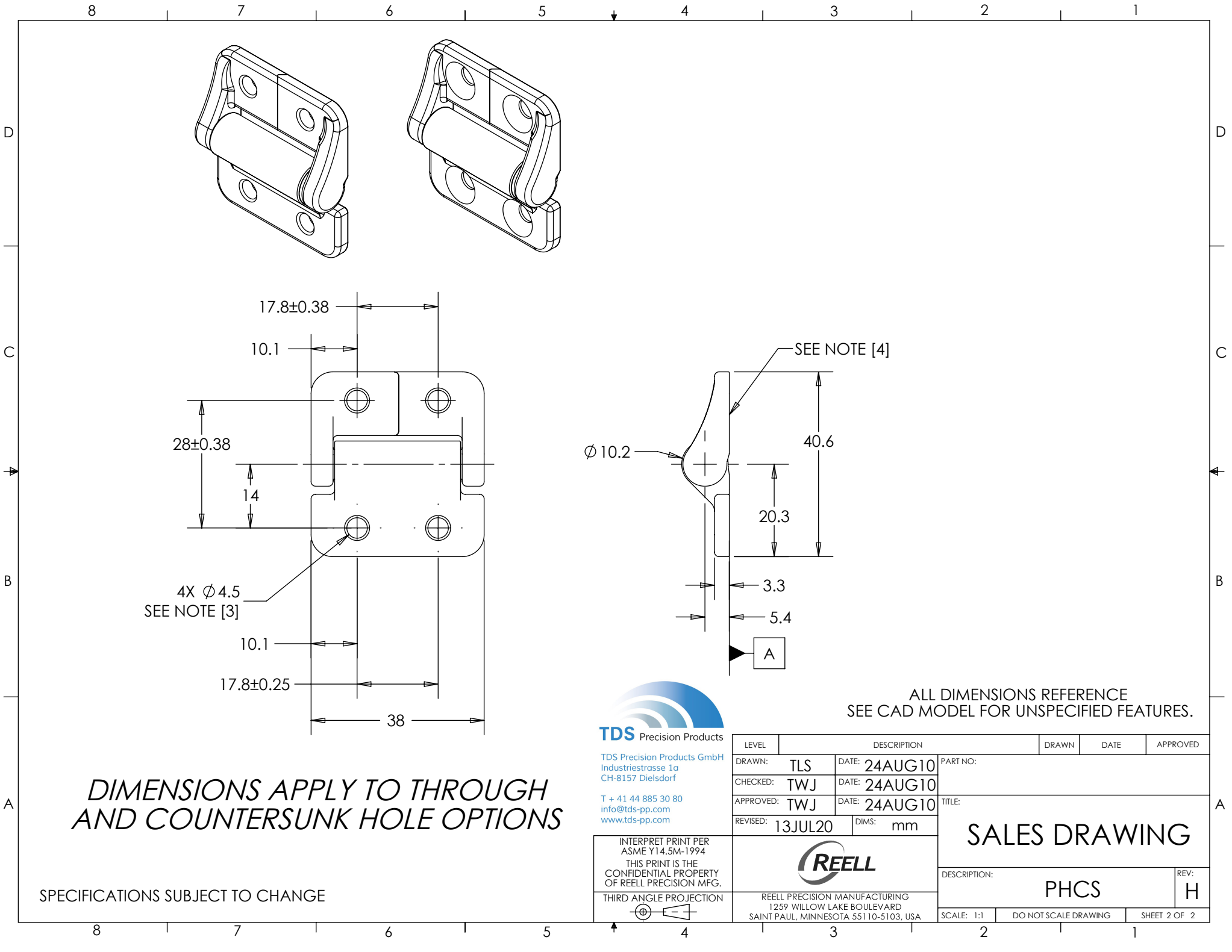
THIRD ANGLE PROJECTION



## NOTES:

1. USER MUST DETERMINE FITNESS FOR USE IN APPLICATION.
2. LIFE: 50,000 CYCLES WHEN DUTY CYCLE IS LESS THAN 10% AND ROTATIONAL SPEED IS LESS THAN 100 RPM. 30 SECONDS MAXIMUM CONTINUOUS ACTUATION.
- [3] DESIGNED TO ACCEPT M4 OR #8 SCREW OR EQUIVALENT.
- [4] FLATS TO BE ORIENTED  $\pm 5^\circ$  WITH RESPECT TO DATUM A AS SHOWN.
5. MATERIAL:  
316L STAINLESS STEEL BRACKET  
316L STAINLESS STEEL SHAFT END  
HARDENED STEEL SHAFT  
HARDENED STEEL TORQUE ELEMENTS

LEVEL	ECO - DESCRIPTION		DRAWN	DATE	APPROVED
DRAWN:	TLS	DATE:	24AUG10	REFERENCE:  TITLE:  <b>SALES DRAWING</b>	
CHECKED:	TWJ	DATE:	24AUG10		
APPROVED:	TWJ	DATE:	24AUG10		
REVISED:	13JUL20	DIMS:	mm		
 REELL PRECISION MANUFACTURING 1259 WILLOW LAKE BOULEVARD SAINT PAUL, MINNESOTA 55110-5103, USA			PART NO:		REV:
			PHCS		H
			SCALE: 1:1	DO NOT SCALE DRAWING	SHEET 1 OF 2



*DIMENSIONS APPLY TO THROUGH  
AND COUNTERSUNK HOLE OPTIONS*

SPECIFICATIONS SUBJECT TO CHANGE

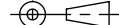


TDS Precision Products GmbH  
Industriestrasse 1a  
CH-8157 Dielsdorf

T + 41 44 885 30 80  
info@tds-pp.com  
www.tds-pp.com

INTERPRET PRINT PER  
ASME Y14.5M-1994  
THIS PRINT IS THE  
CONFIDENTIAL PROPERTY  
OF REELL PRECISION MFG.

THIRD ANGLE PROJECTION



LEVEL		DESCRIPTION		DRAWN	DATE	APPROVED
DRAWN: TLS		DATE: 24AUG10		PART NO:		
CHECKED: TWJ		DATE: 24AUG10				
APPROVED: TWJ		DATE: 24AUG10		TITLE:   <		