

# CATALOG CODE PHCA-X.XX

## TORQUE Nm

0.44  
0.78  
1.22  
1.57  
2.01  
2.35  
2.79

DYNAMIC TORQUE	
NOMINAL (Nm)	TOLERANCE
0.44	±30%
0.78	±25%
1.22	±25%
1.57	±20%
2.01	±20%
2.35	±20%
2.79	±20%

PRODUCT TORQUE SPECIFICATION AT +20°C.

### NOTES:

1. USER MUST DETERMINE FITNESS FOR USE IN APPLICATION.
2. LIFE: 50,000 CYCLES WHEN DUTY CYCLE IS LESS THAN 10% AND ROTATIONAL SPEED IS LESS THAN 100 RPM. 30 SECONDS MAXIMUM CONTINUOUS ACTUATION.
- [3] DESIGNED TO ACCEPT M4 OR #8 SCREW OR EQUIVALENT.
- [4] FLATS TO BE ORIENTED  $\pm 5^\circ$  WITH RESPECT TO DATUM A AS SHOWN.
5. MATERIAL:  
ALUMINUM BRACKET  
ALUMINUM SHAFT END  
HARDENED STEEL SHAFT  
HARDENED STEEL TORQUE ELEMENTS

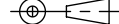


TDS Precision Products GmbH  
Industriestrasse 1a  
CH-8157 Dielsdorf

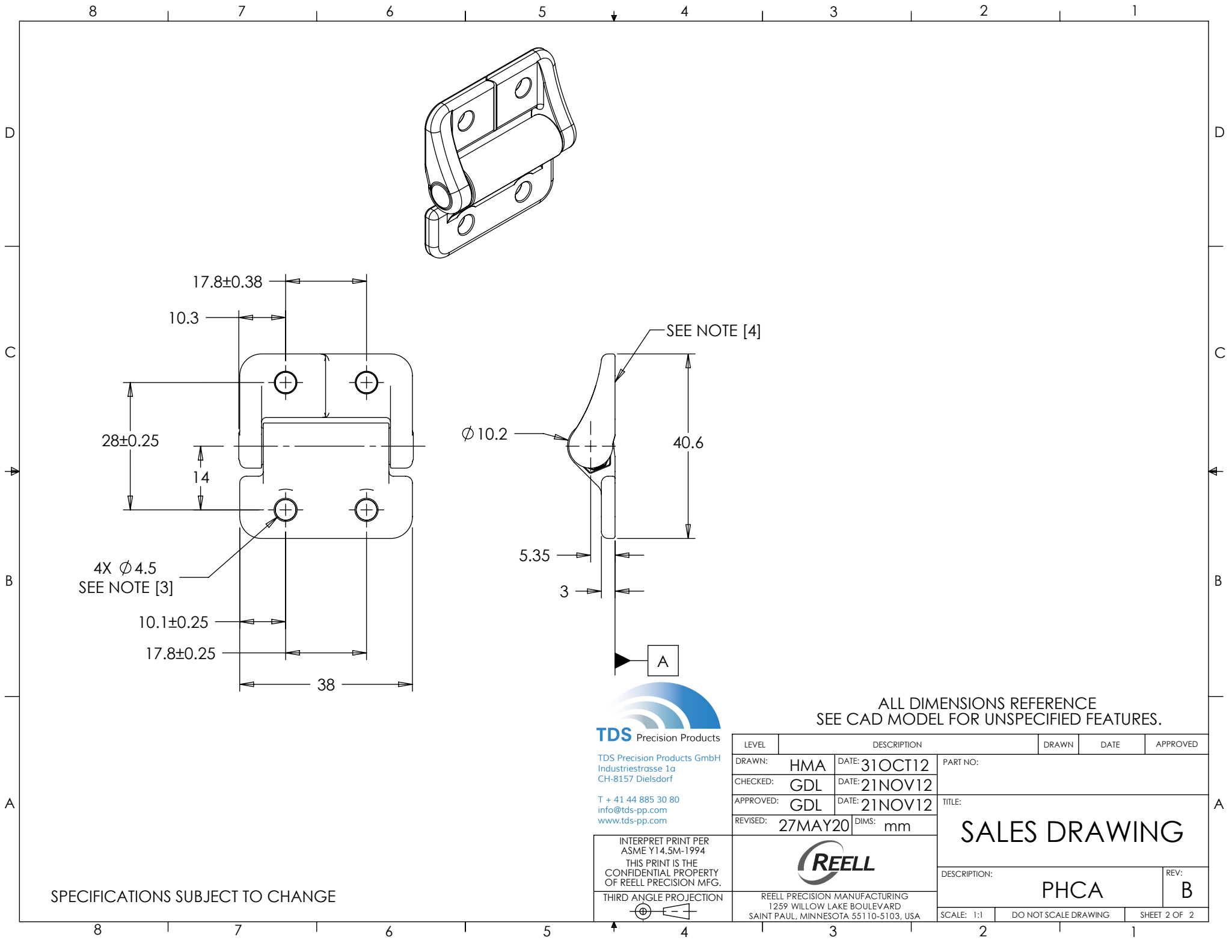
T + 41 44 885 30 80  
info@tds-pp.com  
www.tds-pp.com

INTERPRET PRINT PER  
ASME Y14.5M-1994  
THIS PRINT IS THE  
CONFIDENTIAL PROPERTY  
OF REELL PRECISION MFG.

THIRD ANGLE PROJECTION



LEVEL	ECO - DESCRIPTION		DRAWN	DATE	APPROVED
DRAWN:	HMA	DATE:	31OCT12	REFERENCE:  TITLE:  <b>SALES DRAWING</b>	
CHECKED:	GDL	DATE:	21NOV12		
APPROVED:	GDL	DATE:	21NOV12		
REVISED:	27MAY20	DIMS:	mm		
 REELL PRECISION MANUFACTURING 1259 WILLOW LAKE BOULEVARD SAINT PAUL, MINNESOTA 55110-5103, USA			PART NO:		REV:
			PHCA		B
SCALE: 1:1		DO NOT SCALE DRAWING		SHEET 1 OF 2	



SPECIFICATIONS SUBJECT TO CHANGE

**TDS** Precision Products

TDS Precision Products GmbH  
Industriestrasse 1a  
CH-8157 Dielsdorf

T + 41 44 885 30 80  
info@tds-pp.com  
www.tds-pp.com

INTERPRET PRINT PER  
ASME Y14.5M-1994  
THIS PRINT IS THE  
CONFIDENTIAL PROPERTY  
OF REELL PRECISION MFG.

THIRD ANGLE PROJECTION

LEVEL		DESCRIPTION		DRAWN	DATE	APPROVED
DRAWN:	HMA	DATE:	31OCT12	PART NO:		
CHECKED:	GDL	DATE:	21NOV12			
APPROVED:	GDL	DATE:	21NOV12	TITLE:		
REVISED:	27MAY20	DIMS:	mm			
				SALES DRAWING		
				DESCRIPTION:		REV:
REELL PRECISION MANUFACTURING 1259 WILLOW LAKE BOULEVARD SAINT PAUL, MINNESOTA 55110-5103, USA				PHCA		B
SCALE: 1:1		DO NOT SCALE DRAWING		SHEET 2 OF 2		