

# CATALOG CODE PHC-X.XX-XX-XX

## TORQUE Nm

0.00  
0.44  
0.78  
1.22  
1.57  
2.01  
2.35  
2.79

## MOUNTING TYPE

01 - THROUGH  
02 - COUNTERSINK

## FINISH

01 - PLAIN  
02 - BLACK

### NOTES:

1. USER MUST DETERMINE FITNESS FOR USE IN APPLICATION.
2. LIFE: 50,000 CYCLES WHEN DUTY CYCLE IS LESS THAN 10% AND ROTATIONAL SPEED IS LESS THAN 100 RPM. 30 SECONDS MAXIMUM CONTINUOUS ACTUATION.
- [3] DESIGNED TO ACCEPT M4 OR #8 SCREW OR EQUIVALENT.
- [4] FLATS TO BE ORIENTED  $\pm 5^\circ$  WITH RESPECT TO DATUM A AS SHOWN.
5. MATERIAL:  
ZINC BRACKET AND  
ZINC SHAFT END  
HARDENED STEEL SHAFT  
HARDENED STEEL TORQUE ELEMENTS

DYNAMIC TORQUE	
NOMINAL (Nm)	TOLERANCE
0.00	-
0.44	$\pm 30\%$
0.78	$\pm 25\%$
1.22	$\pm 25\%$
1.57	$\pm 20\%$
2.01	$\pm 20\%$
2.35	$\pm 20\%$
2.79	$\pm 20\%$

PRODUCT TORQUE SPECIFICATION AT  $+20^\circ\text{C}$ .

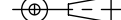


TDS Precision Products GmbH  
Industriestrasse 1a  
CH-8157 Dielsdorf

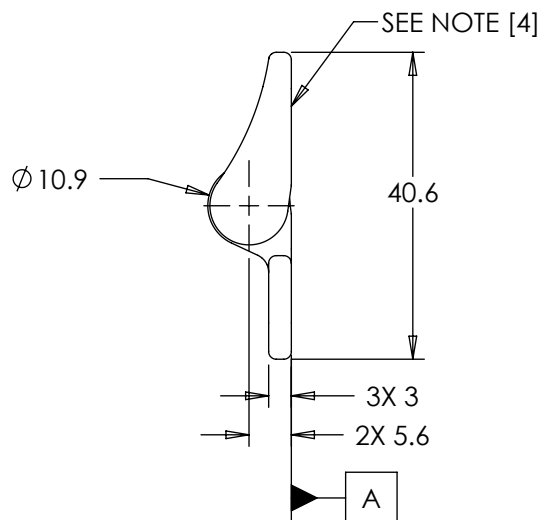
T + 41 44 885 30 80  
info@tds-pp.com  
www.tds-pp.com

INTERPRET PRINT PER  
ASME Y14.5M-1994  
THIS PRINT IS THE  
CONFIDENTIAL PROPERTY  
OF REELL PRECISION MFG.

THIRD ANGLE PROJECTION



LEVEL	ECO - DESCRIPTION		DRAWN	DATE	APPROVED
DRAWN:	LIM	DATE: 7-3-01	REFERENCE:		
CHECKED:	TWJ	DATE: 8-30-01			
APPROVED:	TWJ	DATE: 8-30-01			
REVISED:	05-26-20	DIMS: mm			
 REELL PRECISION MANUFACTURING 1259 WILLOW LAKE BOULEVARD SAINT PAUL, MINNESOTA 55110-5103, USA			TITLE:		
			SALES DRAWING		
			PART NO:		REV:
		PHC		M	
SCALE: 1:1		DO NOT SCALE DRAWING		SHEET 1 OF 2	



*DIMENSIONS APPLY TO COUNTERSINK  
AND STANDARD HOLE OPTIONS*

SPECIFICATIONS SUBJECT TO CHANGE

ALL DIMENSIONS REFERENCE  
SEE CAD MODEL FOR UNSPECIFIED FEATURES.

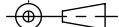


TDS Precision Products GmbH  
Industriestrasse 1a  
CH-8157 Dielsdorf


T + 41 44 885 30 80  
info@tds-pp.com  
www.tds-pp.com

INTERPRET PRINT PER  
ASME Y14.5M-1994  
THIS PRINT IS THE  
CONFIDENTIAL PROPERTY  
OF REELL PRECISION MFG.

### THIRD ANGLE PROJECTION



REELL PRECISION MANUFACTURING  
1259 WILLOW LAKE BOULEVARD  
SAINT PAUL, MINNESOTA 55110-5103, USA

LEVEL		DESCRIPTION		DRAWN		DATE		APPROVE	
DRAWN: LIM		DATE: 7-3-01		REFERENCE:					
CHECKED: TWJ		DATE: 8-30-01							
APPROVED: TWJ		DATE: 8-30-01		TITLE:					
REVISED: 05-26-20		DIMS: mm		<div style="text-align: center; font-size: 2em; font-weight: bold;">SALES DRAWING</div>					
									
REELL PRECISION MANUFACTURING 1259 WILLOW LAKE BOULEVARD SAINT PAUL, MINNESOTA 55110-5103, USA				PART NO: <div style="text-align: center; font-size: 1.5em; font-weight: bold;">PHC</div>				REV: M	
				SCALE: 1:1		DO NOT SCALE DRAWING		SHEET 2 OF 2	