

CATALOG CODE PHB-X.XX-XX-XX-XX

TORQUE Nm
0.44
0.78
1.22
1.57
2.01
2.35
2.79

HINGE TYPE
01 - LEFT
02 - RIGHT
03 - DUAL

MOUNTING TYPE
01 - THROUGH
02 - COUNTERSINK

FINISH
01 - PLAIN
02 - BLACK

DYNAMIC TORQUE	
NOMINAL (Nm)	TOLERANCE
0.44	±30%
0.78	±25%
1.22	±25%
1.57	±20%
2.01	±20%
2.35	±20%
2.79	±20%

PRODUCT TORQUE SPECIFICATION AT +20 °C.

NOTES:

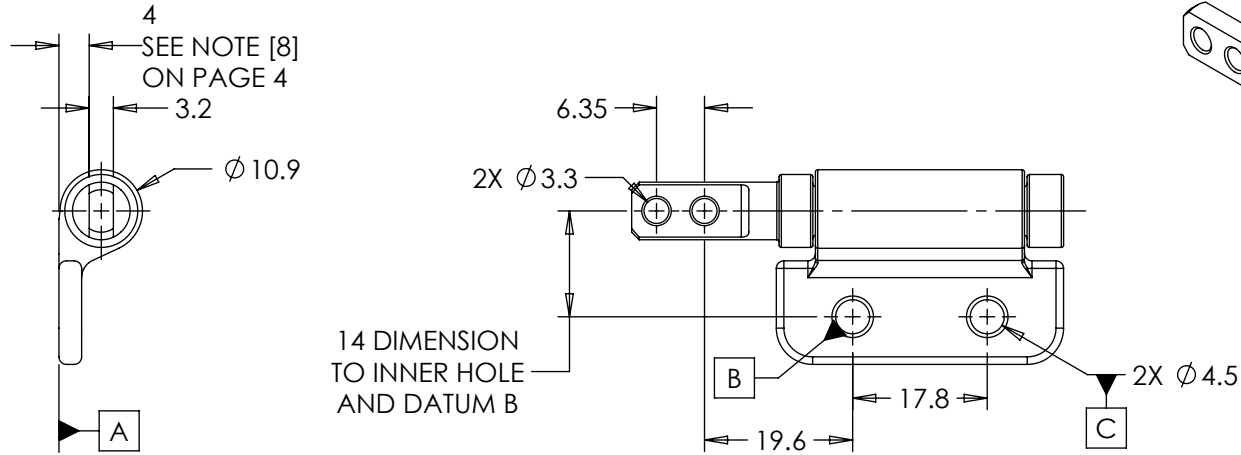
1. USER MUST DETERMINE FITNESS FOR USE IN APPLICATION.
2. LIFE: 50,000 CYCLES WHEN DUTY CYCLE IS LESS THAN 10% AND ROTATIONAL SPEED IS LESS THAN 100 RPM. 30 SECONDS MAXIMUM CONTINUOUS ACTUATION.
3. DESIGNED TO ACCEPT M4 (BRACKET) AND M3 (SHAFT END) SCREWS.
4. SHAFT END FLATS ON DUAL OPTION TO BE ORIENTED ±5° WITH RESPECT TO EACH OTHER.
5. MATERIAL:
ZINC BRACKET
LOW CARBON STEEL WITH ZINC PLATE
SHAFT END
HARDENED STEEL SHAFT
HARDENED STEEL TORQUE ELEMENT



INTERPRET PRINT PER ASME Y14.5M-1994
THIS PRINT IS THE CONFIDENTIAL PROPERTY OF REELL PRECISION MFG.
THIRD ANGLE PROJECTION

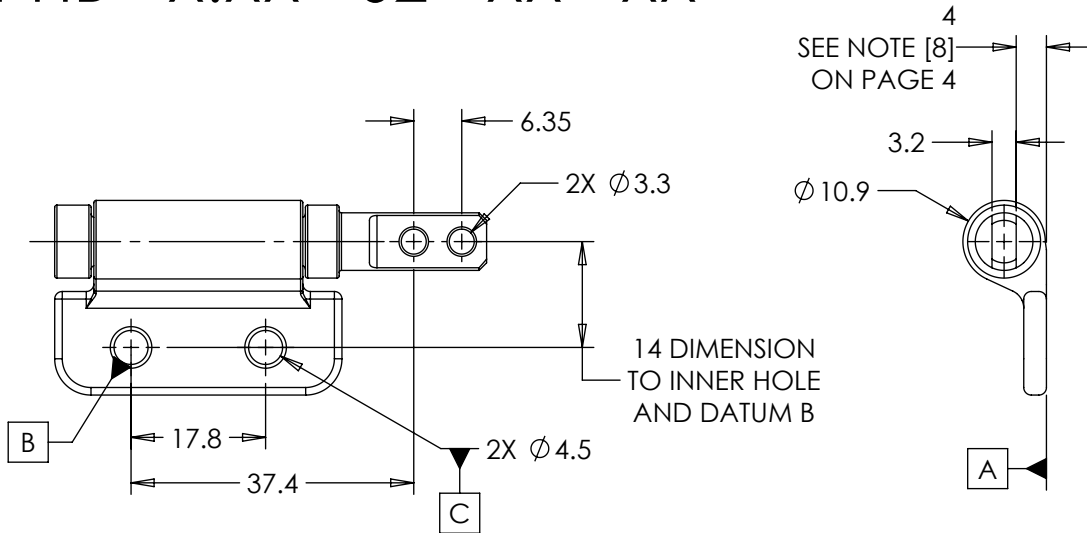
LEVEL	ECO - DESCRIPTION		DRAWN	DATE	APPROVED
DRAWN:	LIM	DATE: 7-3-01	REFERENCE:		
CHECKED:	TWJ	DATE: 8-30-01	TITLE:		
APPROVED:	TWJ	DATE: 8-30-01	SALES DRAWING		
REVISED:	5-5-20	DIMS: mm			
 REELL PRECISION MANUFACTURING 1259 WILLOW LAKE BOULEVARD SAINT PAUL, MINNESOTA 55110-5103, USA			PART NO: PHB		REV: N
			SCALE: 1:1	DO NOT SCALE DRAWING	SHEET 1 OF 4

PHB - X.XX - 01 - XX - XX



DIMENSIONS APPLY TO COUNTERSINK AND STANDARD HOLE OPTIONS

PHB - X.XX - 02 - XX - XX



TDS Precision Products
 TDS Precision Products GmbH
 Industriestrasse 1a
 CH-8157 Dielsdorf
 T + 41 44 885 30 80
 info@tds-pp.com
 www.tds-pp.com

INTERPRET PRINT PER
 ASME Y14.5M-1994
 THIS PRINT IS THE
 CONFIDENTIAL PROPERTY
 OF REELL PRECISION MFG.

THIRD ANGLE PROJECTION

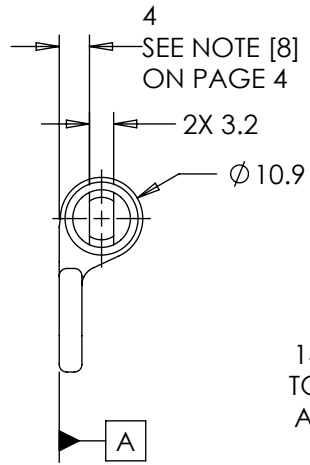


REELL PRECISION MANUFACTURING
 1259 WILLOW LAKE BOULEVARD
 SAINT PAUL, MINNESOTA 55110-5103, USA

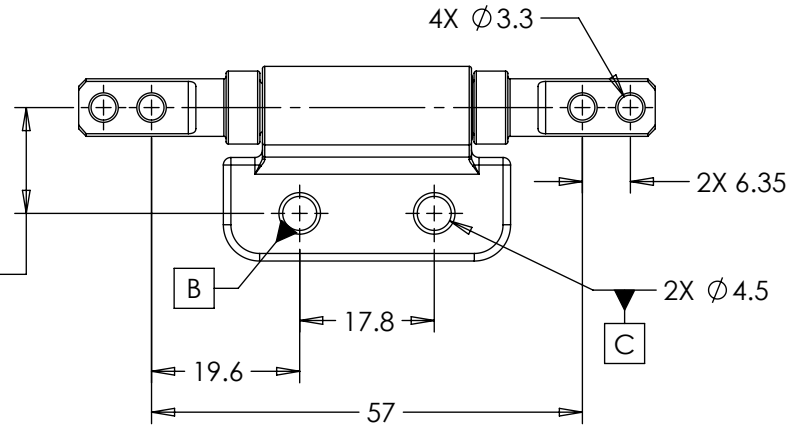
LEVEL	ECO - DESCRIPTION		DRAWN	DATE	APPROVED
DRAWN:	LIM	DATE: 7-3-01	REFERENCE:		
CHECKED:	TWJ	DATE: 8-30-01	TITLE:		
APPROVED:	TWJ	DATE: 8-30-01	SALES DRAWING		
REVISED:	5-5-20	DIMS: mm			
PART NO:		PHB		REV: N	
SCALE: 1:1		DO NOT SCALE DRAWING		SHEET 2 OF 4	

SPECIFICATION SUBJECT TO CHANGE

PHB - X.XX - 03 - XX - XX



14 DIMENSION
TO INNER HOLE
AND DATUM B



*DIMENSIONS APPLY TO COUNTERSINK
AND STANDARD HOLE OPTIONS*

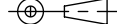


TDS Precision Products GmbH
Industriestrasse 1a
CH-8157 Dielsdorf

T + 41 44 885 30 80
info@tds-pp.com
www.tds-pp.com

INTERPRET PRINT PER
ASME Y14.5M-1994
THIS PRINT IS THE
CONFIDENTIAL PROPERTY
OF REELL PRECISION MFG.

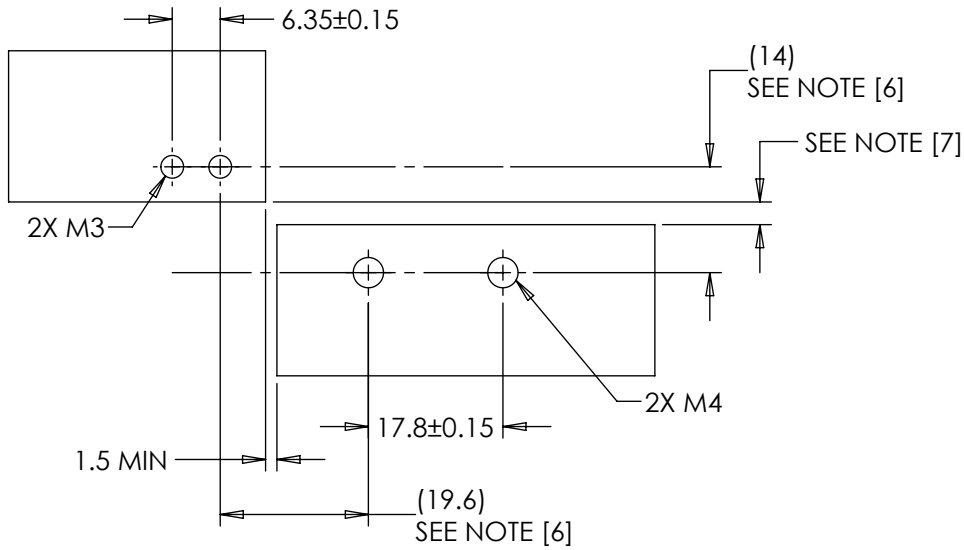
THIRD ANGLE PROJECTION



LEVEL	ECO - DESCRIPTION		DRAWN	DATE	APPROVED
DRAWN:	LIM	DATE: 7-3-01	REFERENCE:		
CHECKED:	TWJ	DATE: 8-30-01	TITLE:		
APPROVED:	TWJ	DATE: 8-30-01	SALES DRAWING		
REVISED:	5-5-20	DIMS: mm			
REELL PRECISION MANUFACTURING 1259 WILLOW LAKE BOULEVARD SAINT PAUL, MINNESOTA 55110-5103, USA			PART NO: PHB		REV: N
SCALE: 1:1		DO NOT SCALE DRAWING		SHEET 3 OF 4	

SPECIFICATION SUBJECT TO CHANGE

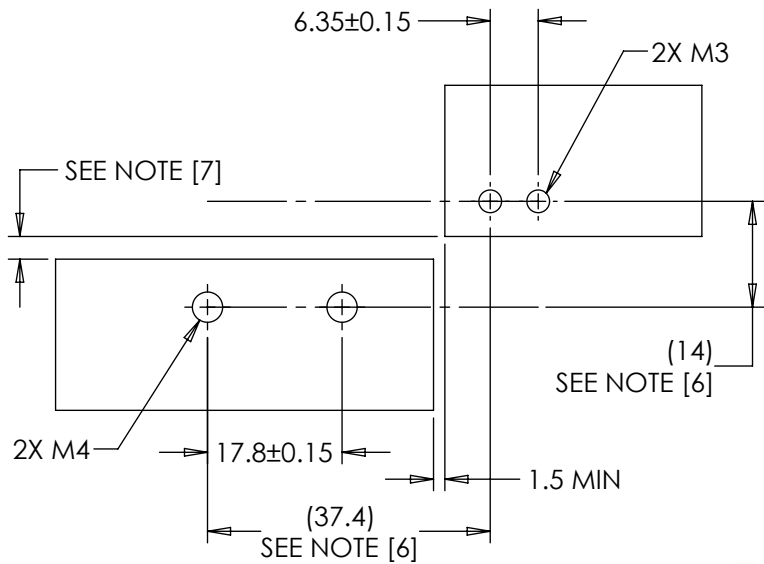
MOUNTING CONFIGURATION FOR ALL LEFT CONFIGURATIONS



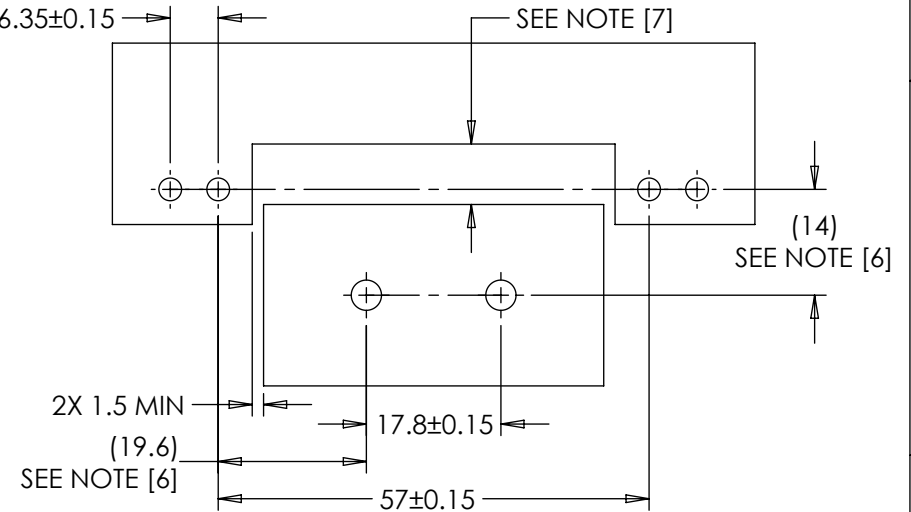
MOUNTING CONFIGURATION NOTES:

- [6] USER WITH CRITICAL MOUNTING INTERFACES (I.E. LATCHES) SHOULD ALIGN PLATES TO ± 0.1 .
- [7] USER TO DETERMINE MINIMUM DISTANCE BASED ON MOUNTING PLATE THICKNESSES AND DESIRED ANGLE OF ROTATION.
- [8] USER MOUNTING CONFIGURATION TO ALLOW ± 0.5 TOLERANCE IN THE DEPTH DIRECTION FROM SHAFT END TO BRACKET IF APPLICABLE.
- 9. MATING ASSEMBLIES SHOULD BE DESIGNED TO ALLOW 0.8 NOMINAL CLEARANCE AROUND ENTIRE ASSEMBLY.

MOUNTING CONFIGURATION FOR ALL RIGHT CONFIGURATIONS



MOUNTING CONFIGURATION FOR ALL DUAL CONFIGURATIONS

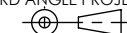


TDS Precision Products GmbH
 Industriestrasse 1a
 CH-8157 Dielsdorf
 T + 41 44 885 30 80
 info@tds-pp.com
 www.tds-pp.com

SPECIFICATION SUBJECT TO CHANGE

INTERPRET PRINT PER ASME Y14.5M-1994
 THIS PRINT IS THE CONFIDENTIAL PROPERTY OF REELL PRECISION MFG.

THIRD ANGLE PROJECTION



LEVEL	ECO - DESCRIPTION		DRAWN	DATE	APPROVED
DRAWN:	LIM	DATE: 7-3-01	REFERENCE:		
CHECKED:	TWJ	DATE: 8-30-01	TITLE:		
APPROVED:	TWJ	DATE: 8-30-01	SALES DRAWING		
REVISED:	5-5-20	DIMS: mm	PART NO: PHB		
			REV: N		

REELL
 REELL PRECISION MANUFACTURING
 1259 WILLOW LAKE BOULEVARD
 SAINT PAUL, MINNESOTA 55110-5103, USA

SCALE: 1:1	DO NOT SCALE DRAWING	SHEET 4 OF 4
------------	----------------------	--------------