

CATALOG CODE MH-14-X.X

TORQUE N-m
1.4
1.8
2.2
2.6
3.0
3.4
3.8
4.2
4.6
5.0
5.4
5.8

NOTES:

1. USER MUST DETERMINE FITNESS FOR USE IN APPLICATION.
2. LIFE: 20,000 CYCLES.
ONE CYCLE = 120° OPEN/120° CLOSED.
FIVE(5) CYCLES PER MINUTE MAX.
3. MATERIAL:
BRACKETS ARE ENGINEERED PLASTIC
SHAFT AND TORQUE ELEMENT ARE
HARDENED STEEL
- [4] DESIGNED TO ACCEPT M6 BUTTON HEAD
SCREW OR EQUIVALENT.
- [5] BRACKETS TO BE ORIENTED $\pm 5^\circ$ WITH RESPECT
TO EACH OTHER AS SHOWN.
6. TOTAL TRAVEL 270°.
7. STATIC TORQUE IS NORMALLY WITHIN
10% OF DYNAMIC TORQUE.
8. TOP SURFACE TEXTURED.

ALL DIMENSIONS REFERENCE
SEE CAD MODEL FOR
UNSPECIFIED FEATURES

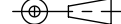



TDS Precision Products GmbH
Industriestrasse 1a
CH-8157 Dielsdorf

T + 41 44 885 30 80
info@tds-pp.com
www.tds-pp.com

INTERPRET PRINT PER
ASME Y14.5M-1994
THIS PRINT IS THE
CONFIDENTIAL PROPERTY
OF REELL PRECISION MFG.

THIRD ANGLE PROJECTION

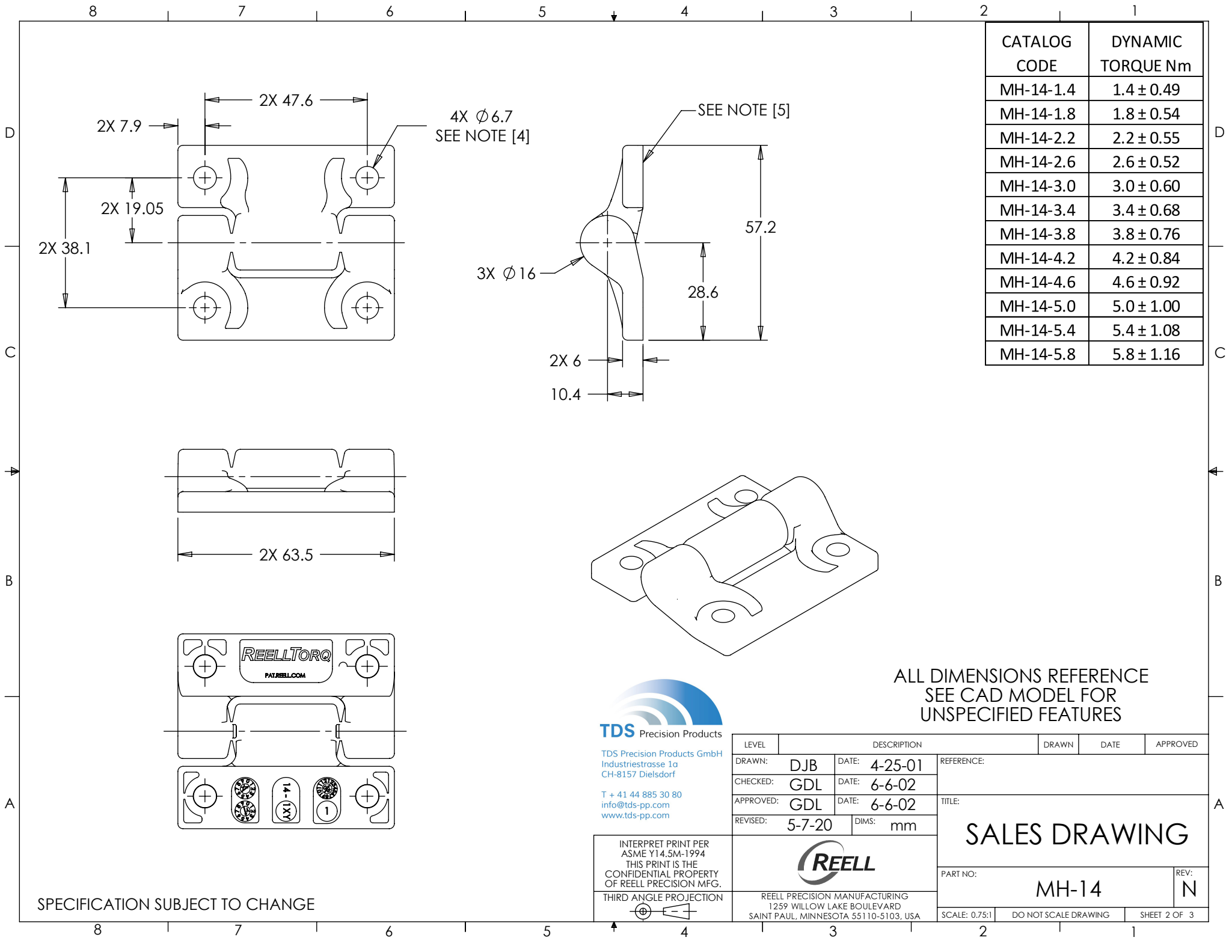


LEVEL		DESCRIPTION		DRAWN	DATE	APPROVED
DRAWN:		DJB	DATE: 4-25-01	REFERENCE:		
CHECKED:		GDL	DATE: 6-6-02			
APPROVED:		GDL	DATE: 6-6-02			
REVISED:		5-7-20	DIMS: mm	TITLE: SALES DRAWING		
				PART NO:		REV:
				MH-14		N
REELL PRECISION MANUFACTURING 1259 WILLOW LAKE BOULEVARD SAINT PAUL, MINNESOTA 55110-5103, USA				SCALE: 0.75:1		DO NOT SCALE DRAWING
				SHEET 1 OF 3		



REELL PRECISION MANUFACTURING
1259 WILLOW LAKE BOULEVARD
SAINT PAUL, MINNESOTA 55110-5103, USA

SPECIFICATION SUBJECT TO CHANGE



CATALOG CODE	DYNAMIC TORQUE Nm
MH-14-1.4	1.4 ± 0.49
MH-14-1.8	1.8 ± 0.54
MH-14-2.2	2.2 ± 0.55
MH-14-2.6	2.6 ± 0.52
MH-14-3.0	3.0 ± 0.60
MH-14-3.4	3.4 ± 0.68
MH-14-3.8	3.8 ± 0.76
MH-14-4.2	4.2 ± 0.84
MH-14-4.6	4.6 ± 0.92
MH-14-5.0	5.0 ± 1.00
MH-14-5.4	5.4 ± 1.08
MH-14-5.8	5.8 ± 1.16

ALL DIMENSIONS REFERENCE
SEE CAD MODEL FOR
UNSPECIFIED FEATURES

TDS Precision Products
TDS Precision Products GmbH
Industriestrasse 1a
CH-8157 Dielsdorf
T + 41 44 885 30 80
info@tds-pp.com
www.tds-pp.com

INTERPRET PRINT PER
ASME Y14.5M-1994
THIS PRINT IS THE
CONFIDENTIAL PROPERTY
OF REELL PRECISION MFG.
THIRD ANGLE PROJECTION

LEVEL	DESCRIPTION	DRAWN	DATE	APPROVED
DRAWN:	DJB	DATE:	4-25-01	REFERENCE:
CHECKED:	GDL	DATE:	6-6-02	TITLE:
APPROVED:	GDL	DATE:	6-6-02	SALES DRAWING
REVISED:	5-7-20	DIMS:	mm	PART NO: MH-14
				REV: N
				SCALE: 0.75:1
				DO NOT SCALE DRAWING
				SHEET 2 OF 3

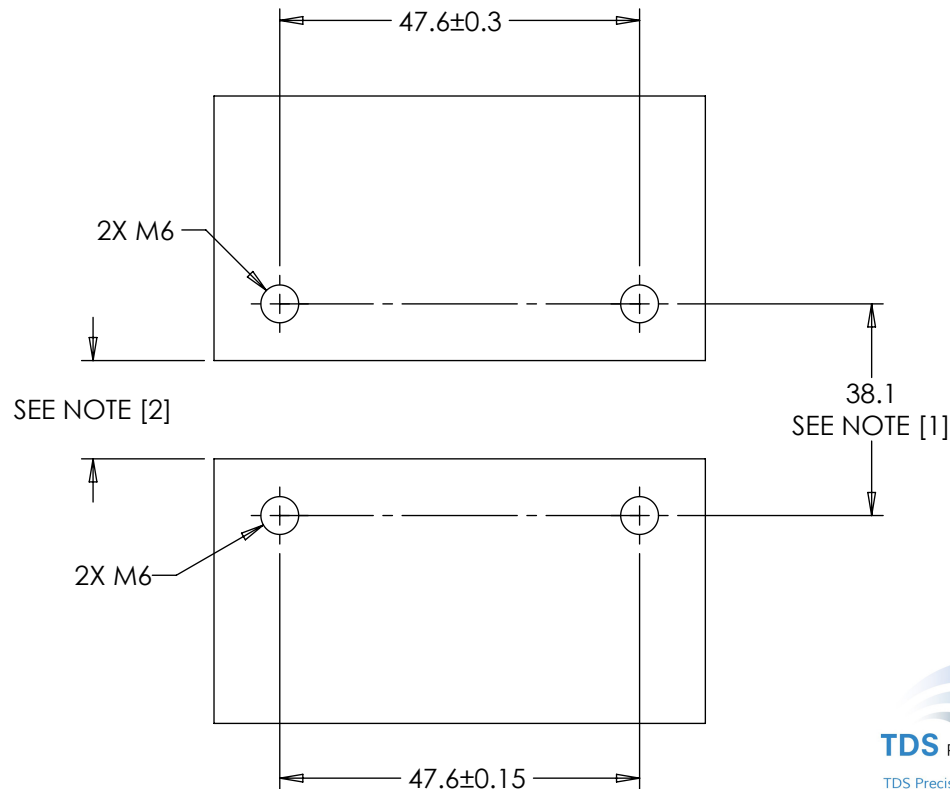
SPECIFICATION SUBJECT TO CHANGE

REELL
REELL PRECISION MANUFACTURING
1259 WILLOW LAKE BOULEVARD
SAINT PAUL, MINNESOTA 55110-5103, USA

CUSTOMER MOUNTING CONFIGURATION:

NOTES:

- [1] USER WITH CRITICAL MOUNTING INTERFACES (I.E. LATCHES) SHOULD ALIGN PLATES TO ± 0.1 .
- [2] USER TO DETERMINE MINIMUM DISTANCE BASED ON MOUNTING PLATE THICKNESS AND DESIRED ANGLE OF ROTATION.
3. MATING ASSEMBLIES SHOULD BE DESIGNED TO ALLOW 0.5 NOMINAL CLEARANCE AROUND ENTIRE ASSEMBLY.



TDS Precision Products
TDS Precision Products GmbH
Industriestrasse 1a
CH-8157 Dielsdorf
T + 41 44 885 30 80
info@tds-pp.com
www.tds-pp.com

INTERPRET PRINT PER
ASME Y14.5M-1994
THIS PRINT IS THE
CONFIDENTIAL PROPERTY
OF REELL PRECISION MFG.

THIRD ANGLE PROJECTION

LEVEL	ECO - DESCRIPTION		DRAWN	DATE	APPROVED
DRAWN:	DJB	DATE: 4-25-01	REFERENCE: TITLE: SALES DRAWING PART NO: MH-14 REV: N		
CHECKED:	GDL	DATE: 6-6-02			
APPROVED:	GDL	DATE: 6-6-02			
REVISED:	5-7-20	DIMS: mm			
REELL PRECISION MANUFACTURING 1259 WILLOW LAKE BOULEVARD SAINT PAUL, MINNESOTA 55110-5103, USA			SCALE: 1:1	DO NOT SCALE DRAWING	SHEET 3 OF 3

SPECIFICATION SUBJECT TO CHANGE