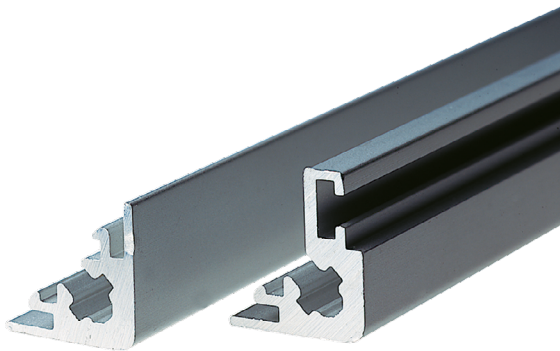


Data Sheet for Aluminium Housing

Electronics aluminium bar profile

Series STP



Profile K

Profile G

The STP aluminium bar profiles that can be combined with each other are designed for self-assembly of individual aluminium housings. With the corresponding covers and end plates, housings can be designed in various dimensions. The bar profiles are available as yard goods (max. 3000 mm). We cut them to the desired lengths. Optionally we offer the possibility of a complete housing. The surface of the profiles is anodized aluminium (optional black anodized). The bar profiles have grooves for mounting the covers with max. 1.6 mm material thickness.

For profile K: Insert the aluminium covers into the groove and fix the end plates with screws M5x20.

For profile G: Insert the aluminium covers into the grooves, screw the side parts with screws (M3x4) and nuts M3, screw the end plates with the profiles (M5x20).

| Data Profile | K | G |
|--------------------------|---|-----------|
| External dimension hight | 16 mm | 18 mm |
| External dimension width | 16 mm | |
| T groove | no | yes |
| Material | ALMgSi 0,5 F22 | |
| Material thickness | 1,2 mm | |
| Colour | Aluminium nature anodised (optional black anodised) | |
| Mass ca. | 0,26 kg/m | 0,29 kg/m |

| Mounting Cover and End Plates | K | G |
|-------------------------------|--------------|------------------|
| Feed for screws end plates | M5 | |
| Feed for cover | max. 1,6 mm | |
| T groove feed | - | Nut and screw M3 |
| Mounting parts | Not included | |

Data Sheet for Aluminium Housing

Electronics aluminium bar profile

Series STP

Order Code bar profile

| Description | Selection: standard=black/bold, possible options=grey/cursive | | | | | | |
|--|---|----------|-------------|--|----------|--|--|
| Series: | STP | | | | | | |
| Profile design: | | | | | | | |
| Profile K | | K | | | | | |
| Profile G | | G | | | | | |
| Profile length: | | | | | | | |
| 1000 mm | | | 1000 | | | | |
| <i>Option custom length* <3000 mm</i> | | | <i>XXXX</i> | | | | |
| Profile colour: | | | | | | | |
| Aluminium nature anodised | | | | | A | | |
| <i>Option aluminium black anodised</i> | | | | | N | | |

* Minimum order quantity ≥100 pieces (= 25 housings)

Order Code side panels

| Description | Selection: standard=black/bold, possible options=grey/cursive | | | | | | |
|--|---|------------------|--|----------|--|--|--|
| Side panels (depth 1,5 mm): | | | | | | | |
| 89 x 1000 mm | | 89 x 1000 | | | | | |
| 100 x 250 mm | | 100 x 250 | | | | | |
| 250 x 250 mm | | 250 x 250 | | | | | |
| 250 x 500 mm | | 250 x 500 | | | | | |
| <i>Option custom dimensions* <3000 mm</i> | | <i>... X ...</i> | | | | | |
| Profile colour: | | | | | | | |
| Aluminium nature anodised | | | | A | | | |

* Minimum order quantity ≥100 pieces (= 25 housings)

For higher quantities or on-going demand, additional options are available as described below on request

For Example: Processing of the housings such as drilling, punching, milling etc. as well as printing, customer-specific colours according to customer requirements. Customized processing of end plates, other thicknesses and materials. Chromate the bare housing and plates and more.

