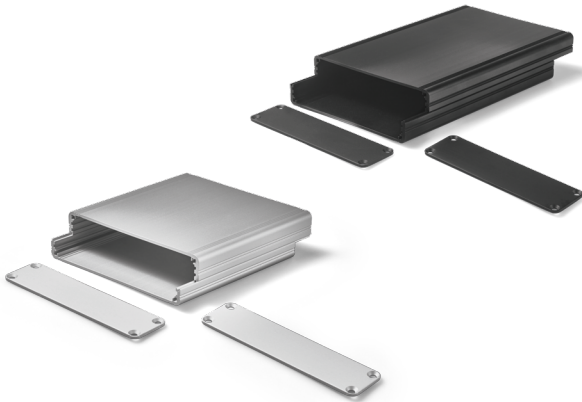


# Data Sheet for Aluminium Housing

## Elektronik aluminium housing

## Series EUKAP FS



The aluminium housings of the EUKAP FS series are suitable for euroboards with a width of 100 mm and a max. 1.8 mm thickness. The housings are available in 6 different heights (18.46 mm internal height) and in standard lengths 80/100/160 mm (optionally further). The housings are supplied as a kit consisting of 2 profiles, 2 end plates including screws. The surface is anodized aluminium or anodized aluminium black.

### Data Profile

Material	EN AW 6060 T66
Colour	Aluminium anodised or black anodised

Profile kind	External dim. height	External dim. width	Internal dim. height	PCB width	PCB depth	PCB groove x2
F22	22 mm	105 mm	18 mm	100,3 mm	≤ 1,8 mm	2
F26	26 mm	105 mm	22 mm	100,3 mm	≤ 1,8 mm	3
F30	30 mm	105 mm	26 mm	100,3 mm	≤ 1,8 mm	4
F34	34 mm	105 mm	30 mm	100,3 mm	≤ 1,8 mm	5
F38	38 mm	105 mm	34 mm	100,3 mm	≤ 1,8 mm	6
F46	46 mm	105 mm	42 mm	100,3 mm	≤ 1,8 mm	8

### Data End plates (included in delivery)

Material	AlMg1
Colour	Aluminium anodised or black anodised
Material thickness	2 mm
Feed for screws	4 x 2 screws M3x10 included in delivery

# Data Sheet for Aluminium Housing

Elektronik aluminium housing

Series EUKAP FS

## Order Code

Description		Selection: standard=black/bold, possible options=grey/cursive		
<b>Series:</b>	<b>EUKAP FS</b>			
<b>Hight x width external dimensions:</b>				
22 mm x 105 mm		<b>F22</b>		
26 mm x 105 mm		<b>F26</b>		
30 mm x 105 mm		<b>F30</b>		
34 mm x 105 mm		<b>F34</b>		
38 mm x 105 mm		<b>F38</b>		
46 mm x 105 mm		<b>F46</b>		
<b>Profile length:</b>				
<i>Option 80 mm</i>			<i>80</i>	
<b>100 mm</b>			<b>100</b>	
<b>120 mm</b>			<b>120</b>	
<b>160 mm</b>			<b>160</b>	
<i>Option 200 mm</i>			<i>200</i>	
<i>Option 220 mm</i>			<i>220</i>	
<i>Option custom length ≤1000 mm</i>			<i>xxxx</i>	
<b>Profile and end plates colour:</b>				
<b>Aluminium anodised</b>				<b>A</b>
<b>Aluminium black anodised</b>				<b>N</b>

**For higher quantities or on-going demand, additional options are available as described below on request**

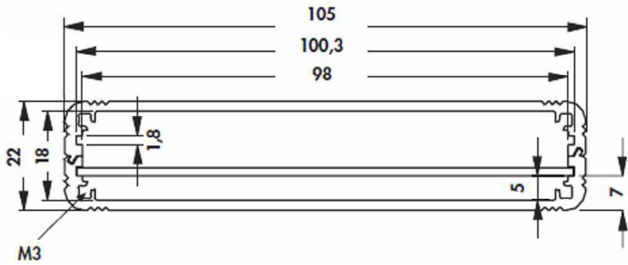
For Example: Processing of the housings such as drilling, punching, milling etc. as well as printing. Customized processing of end plates other thicknesses or materials and much more.

# Data Sheet for Aluminium Housing

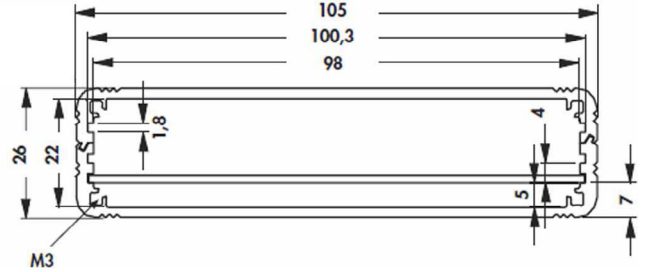
Elektronik aluminium housing

Series EUKAP FS

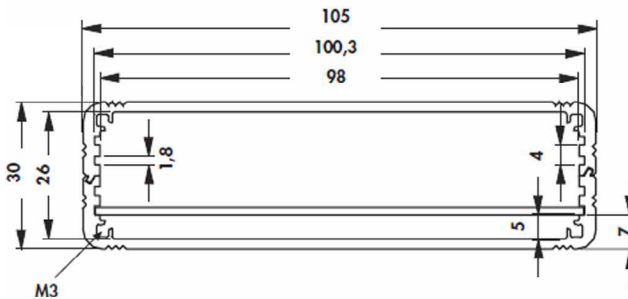
## Drawing housing



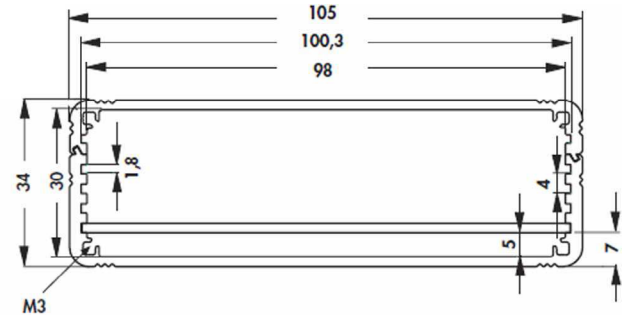
F22



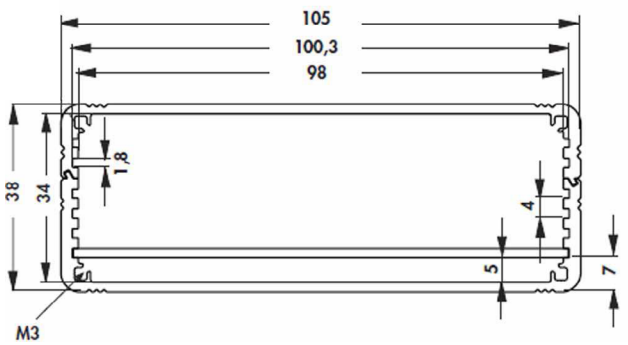
F26



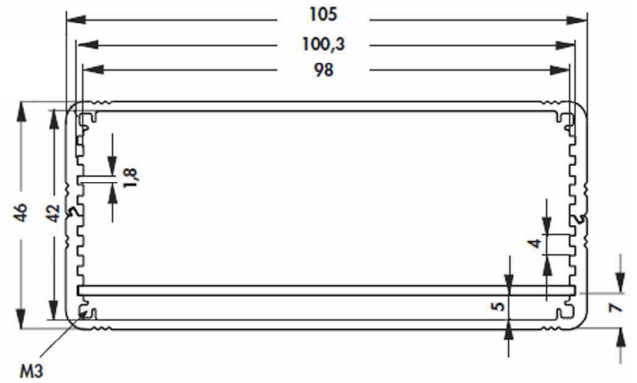
F30



F34



F38



F46