

# Leaf Versions & Specifications

Specs	Leaf Light HS v2	Leaf Pro HS v2
EAN	73-30130-00685-0	73-30130-00843-4

## HARDWARE SPECIFICATIONS

# of CAN Channels	1	1
Connectors	DSUB 9	DSUB 9
Current Consumption	90mA	Max 195mA
Dimensions (L x W x H) mm	165 x 35 x 17 mm	165 x 35 x 17 mm
Galvanic Isolation	Yes	Yes
Interface	USB	USB
Material	PA66	PA66
Temperature Range	-20 to +70 °C	-40 to +85 °C
Weight (g)	100 g	120 g
Circuit Board version available	Yes	No

## TECHNICAL PERFORMANCE

11-bit CAN 2.0A & 29-bit CAN 2.0B	Yes	Yes
Auto RX Buffers	No	No
Auto TX Buffers	No	Yes
Arbitration Bittate	40 - 1000 kbps	40 - 1000 kbps
Max Data Bittate	N/A	8Mbit/s
CAN FD Capable	No	ISO & Non-ISO
Error Counters Reading	No	Yes
Error Frame Generation	No	Yes
Messages Per Second Receiving	8000	20000
Messages Per Second Sending	8000	20000
On-board Buffer	Yes	Yes
Operating System	Windows Vista -10, Linux	Windows Vista -10, Linux
Silent Mode	No	Yes
Timestamp Resolution	100 µs	1 µs

## OEM: Create Your Own Custom Leaf

Don't see a Leaf that's exactly right for you? Let us build you one.

Our hardware customization services put Kvaser's 30-years of CAN development experience to work, for you. You'll get best-in-class hardware; built exactly the way you need it.



# Kvaser Leaf

INDUSTRY-LEADING SINGLE-CHANNEL  
USB TO CAN INTERFACES



# Kvaser Leaf

## Industry-Leading Single-Channel USB to CAN Interfaces

Kvaser Leaf hardware offers one of the industry’s easiest and most affordable high-speed USB to CAN interfaces. Every model in our lineup is small, flexible, ergonomically designed and compatible with software & services from over 100 technical partners.

### Kvaser Leaf Light HS v2

EAN: 73-30130-00685-0

### Kvaser Leaf Pro HS v2

EAN: 73-30130-00843-4

### Main Features

- Plug & Play Installation
- 8,000–20,000 Messages Per Second
- 11-bit (CAN 2.0A) and 29-bit (CAN 2.0B active) Identifiers
- 1-100 Microsecond Timestamps
- Galvanic Isolation
- Fully Compatible with J1939, CANopen, NMEA 2000 and DeviceNet
- 2 year Standard Warranty; Register your product at [Kvaser.com/getting-started](https://kvaser.com/getting-started) for additional 1 year warranty extension.
- Kvaser CANLIB SDK with API is a free resource to develop software for the Kvaser CAN interfaces. Includes full documentation and many program samples, written in C, C++, C#, Delphi, Java, Python and Visual Basic.
- Supports J2534 and RP1210.
- All models comply with CE and RoHS.



### Leaf Rugged

IP65 rated lightweight aluminum housing for dust and water protection.  
-40°C +85°C operating temperatures.

Product	EAN
Leaf Light R v2	73-30130-00921-9
Leaf SemiPro Rugged HS	73-30130-00506-8
Leaf Professional Rugged HS	73-30130-00509-9

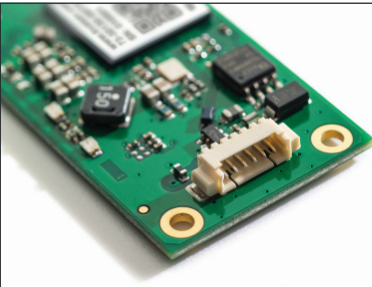


### Leaf OBDII

USB to OBDII connector for vehicle to computer connections.

Product	EAN
Leaf Light HS v2 OBDII	73-30130-00732-1
Leaf Pro HS v2 OBDII	73-30130-00849-6

# Special Editions



### Leaf CB

Bare circuit board for custom enclosures and projects.

Product	EAN
Leaf Light HS v2 CB	73-30130-00733-8



### Leaf SWC

Single Wire CAN (SAE J2411) compatible.

Product	EAN
Leaf SemiPro SWC	73-30130-00263-0
Leaf Professional SWC	73-30130-00264-7



### Leaf Light HS v2 J1939-13

SAE J1939 heavy-duty vehicle compatible.

Product	EAN
Leaf Light HS v2 J1939-13	73-30130-00915-8



### Leaf LS

Low Speed CAN (ISO 11898-3) compatible.

Product	EAN
Leaf SemiPro LS	73-30130-00260-9
Leaf Professional LS	73-30130-00261-6



### Leaf LIN

Local Interconnect Network (LIN) 1.3 and 2.x compatible.

Product	EAN
Leaf Professional LIN	73-30130-00269-2



### Leaf M12

USB to M12 compatible 5-pin connector for marine applications.

Product	EAN
Leaf Light v2 M12	73-30130-00881-6