

# Data Sheet for Precision Potentiometer

## Multiturn Hybrid Potentiometer

## Series HHI17/19



The HHI(R)17/19 potentiometers in 22 mm housing are suitable for applications where a long life and very high-resolution multiturn potentiometer with reinforced bearing is important.

- Very high-resolution, long-lasting and clean signal - no winding jumps due to hybrid technology
- Robust due to reinforced bearing - up to 4 N
- Simplified mounting due to connector
- Version HHIR17/19 with slipping clutch
- With many options

The high-resolution precision potentiometers of the HHI(R)17/19 series have a wire-wound resistor element, which is finished with a conductive plastic layer. Thus the so-called winding jumps are omitted and the resolution is almost infinite. Due to the smooth surface of the resistance element, the hybrid potentiometer has a significantly longer life and qualifies it as a position feedback in closed loop control circuits. In addition, an optional integrated slipping clutch protects the potentiometer from damage by overrunning the end stops and facilitates the zero point adjustment. The shaft diameters is Ø6,35 / Ø6,00 mm (HHI(R)17/HHI(R)19) and is equipped with a screwdriver slot. The potentiometer is available in a 3, 5 or 10 turn version. The radial gold-plated connection pins are suitable for flat connectors (2.8 mm according to DIN 46247 part 3) and the connector version simplifies the mounting.

Electrical Data	3-turn	5-turn	10-turn
Effective electrical angle of rotation 1.)	1080° ±5°	1800° ±5°	3600° ±5°
Total resistance 1.)	1..50 kOhm	1..50 kOhm	2..100 kOhm
Resistance tolerance		±10% (±5%)	
Independent linearity (best straight line) 1.)	±0,35%	±0,35% (±0,2%)	±0,25% (±0,1%)
Theoretical resolution 1.)		Nearly infinite	
Backlash (Hysteresis) 1.)		≤ 2°	
Max. / recommended wiper current 1.)		10 µA / 2 µA	
Power rating @ 70°C (0W @ 105°C)	0,5 W	1 W	2 W
Insulation Voltage 1.)		1000 VAC, 1min	
Insulation Resistance 1.)		100 MOhm @ 1000 VDC	

Mechanical Data, Environmental Conditions, Miscellaneous	3-turn	5-turn	10-turn
Mechanical angle of rotation	1080° +10°	1800° +10°	3600° +10°
Lifetime (90% el. eff. angle half sine) 2.)	1,5 Mio. rotations	2,5 Mio. rotations	5 Mio. rotations
Max. operational speed		40 rev. / min.	
Bearing		Brass bearing front and polymer bearing rear side	
Operational torque @ ambient temperature 1.) 2.)		5 Nmm	
End stop torque 1.) 2.)		35 Ncm	
Operating temperature range		-20..+105°C	
Storage temperature range		-55..+105°C	
Protection grade (IEC 60529)		IP40	
Protection option D shaft sealing (IEC 60529)		IP65 optional	
Vibration (IEC 68-2-6, Test Fc)		15g 10..2000Hz x 12h	
Shock (IEC 68-2-27, Test Ea)		49g @ 11 ms x 18	
Housing diameter		22 mm	
Housing depth		19 mm	
Shaft diameter (HH17/19)		6,35 mm / 6,00 mm	
Shaft type		Solid shaft	

# Data Sheet for Precision Potentiometer

Multiturn Hybrid Potentiometer

Series HHI17/19

Mechanical Data, Environmental Conditions, Miscellaneous	3-turn	5-turn	10-turn
Max. radial load		≤4 N	
Max. axial load		≤1 N	
Connection type	Gold plated soldering lugs, with integrated connector		
Connection position		Radial	
Sensor mounting		Bushing	
Mass		22 g	
Fastening parts included in delivery		Nut, toothed washer	
Fastening torque mounting nut		150 Ncm	
Material shaft		Stainless steel	
Material housing		Reinforced fibreglass PA66	

1.) According IEC 60393

2.) Determined by climatic conditions according to IEC 68-1, para. 5.3.1 without load collectives

Please note: Max. permissible supply voltage <75 VDC respectively <50 VAC in addition the max. power rating must be observed

# Data Sheet for Precision Potentiometer

Multiturn Hybrid Potentiometer

Series HHI17/19

## Order code

<b>Description</b>	Selection: standard=black/bold, possible options=grey/cursive	
<b>Series:</b>	<b>HHI</b>	
<b>Slipping clutch:</b>		
<b>Without additional mechanics</b>	-	
<b>With integrated slipping clutch</b>	<b>R</b>	
<b>Shaft diameter:</b>		
<b>Ø 6,35 mm</b>	<b>17</b>	
<b>Ø 6,00 mm</b>	<b>19</b>	
<b>Revolutions with stop:</b>		
<i>Option 3-turn</i>	<i>03M</i>	
<i>Option 5-turn</i>	<i>05M</i>	
<b>10-turn</b>	<b>10M</b>	
<b>Resistance value:</b>		
<i>Option 1 kOhm (only 3 and 5-turn)</i>	<i>R1k</i>	
<i>Option 2 kOhm</i>	<i>R2k</i>	
<b>5 kOhm</b>	<b>R5k</b>	
<b>10 kOhm</b>	<b>R10k</b>	
<i>Option 20 kOhm</i>	<i>R20K</i>	
<i>Option 50 kOhm</i>	<i>R50K</i>	
<i>Option 100 kOhm (only 10 Turn)</i>	<i>R100K</i>	
<b>Resistance tolerance:</b>		
<b>±10%</b>	<b>W10%</b>	
<i>Option ±5%</i>	<i>W5%</i>	
<b>Independent linearity:</b>		
<b>±0,25% (10 Turn)</b>	<b>L0,25%</b>	
<i>Option ±0,35% (3 and 5 Turn)</i>	<i>L0,35%</i>	
<i>Option ±0,10% (10 Turn)</i>	<i>L0,1%</i>	
<i>Option ±0,20% (5 Turn)</i>	<i>L0,2%</i>	
<b>Electrical connection:</b>		
<b>With soldering lugs</b>	-	
<i>With connector</i>	<i>ST</i>	
<i>Option center tap: (only 10-turn, not with connector)</i>	<i>CT</i>	
<b>Front shaft:</b>		
<b>HHI(R)17 = Ø6,35 x 20,6 mm</b>	-	
<b>HHI(R)19 = Ø6,00 x 20,6 mm</b>	-	
<i>Option shaft length in mm</i>	<i>Ax,xx</i>	
<i>Option shaft diameter in mm (≤6,35 mm)</i>	<i>DMx,xx</i>	
<b>Screwdriver slot standard:</b>	-	
<b>Shaft sealing:</b>		
<b>Standard is without sealing</b>	-	
<i>Option D with shaft sealing</i>	<i>D</i>	

**For higher quantities or on-going demand, additional options are available as described below on request**

For Example: Sealed housing case, special electrical and mechanical angles of rotation, and special resistance and linearity tolerances. Furthermore we can mount gear wheels or attach cable assemblies with or without connectors and much more.

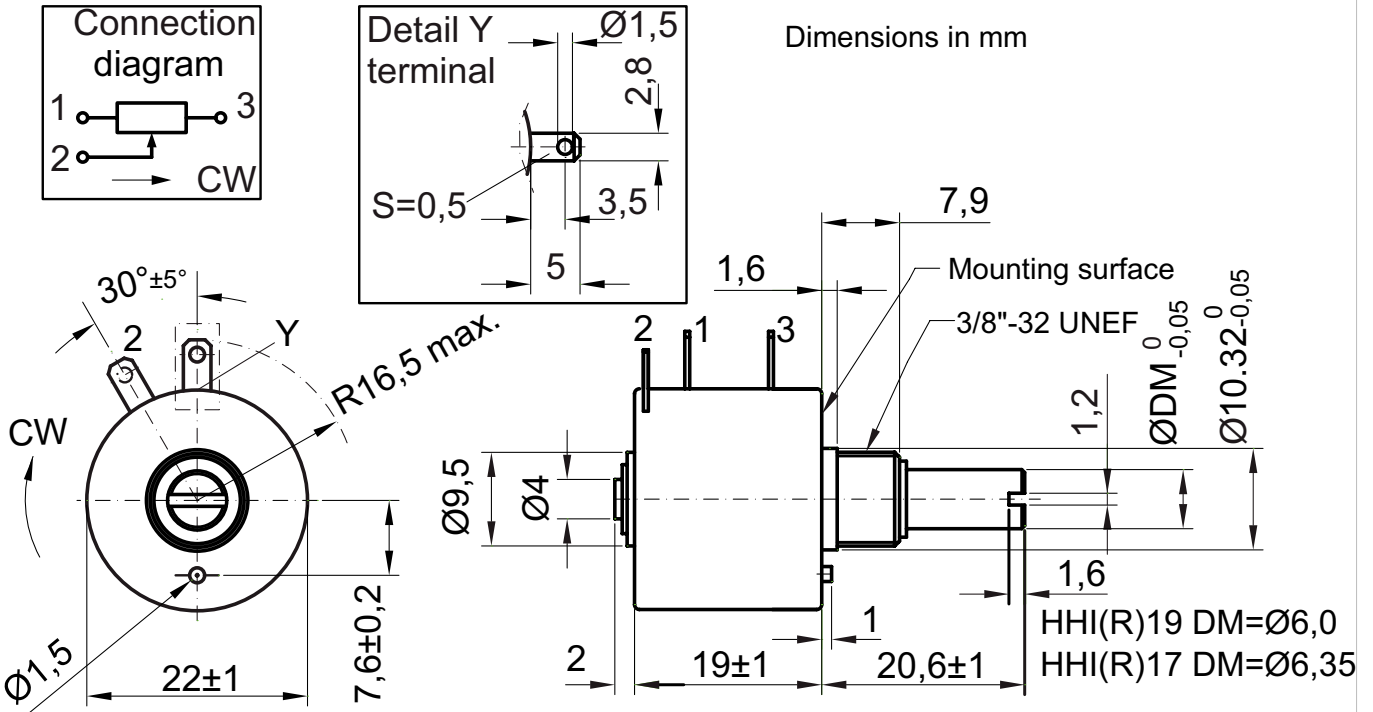
# Data Sheet for Precision Potentiometer



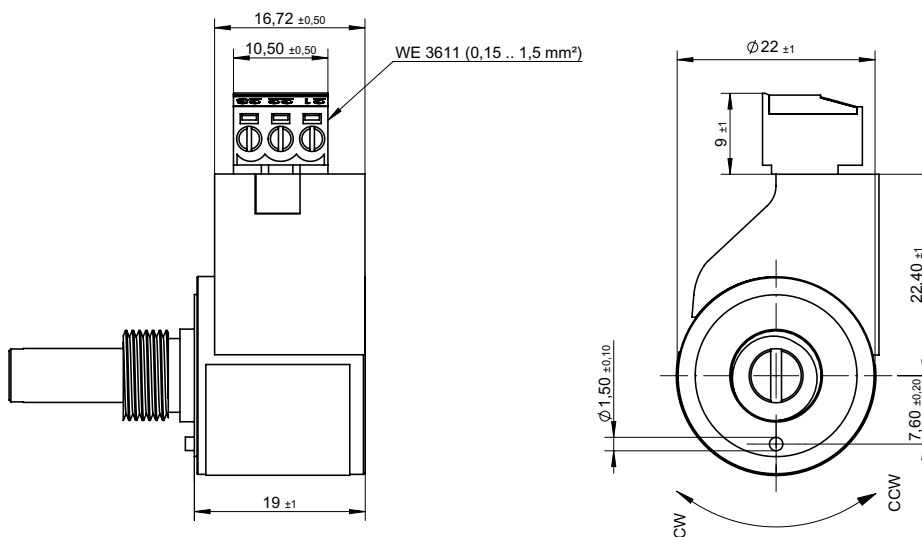
Multiturn Hybrid Potentiometer

Series HHI17/19

## Drawing



## Connector Version



### On Request: Special machining on shaft

Slot



Groove



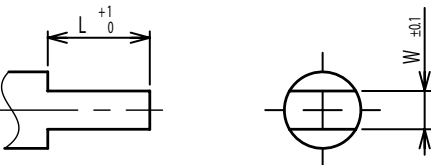
Flat



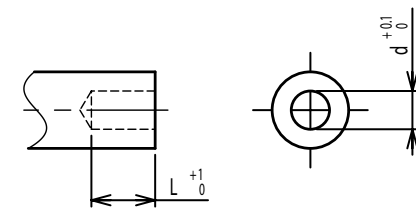
Round top



Double side flat



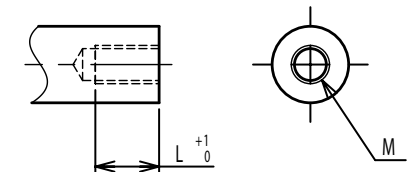
Counterbore hole



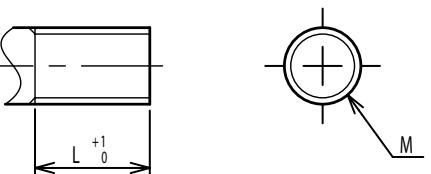
Step



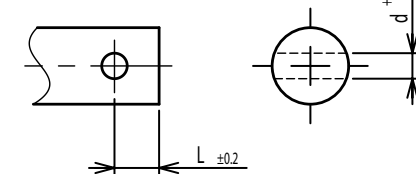
Counterbore screw hole



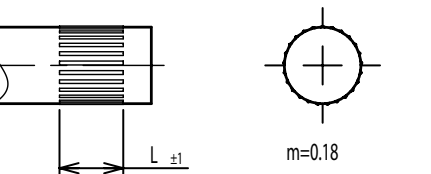
Screw Thread



Pin hole



Knurled(Parallel)



Screw thread inside hole

